

SCCCD Integrated Planning Model and Manual First Reading

Presented to the Board of Trustees on November 7, 2013

Dr. George Railey, Vice Chancellor of Educational Services & Institutional Effectiveness

with

Dr. Jothany Blackwood

Districtwide Liaison for Strategic & Integrated Planning

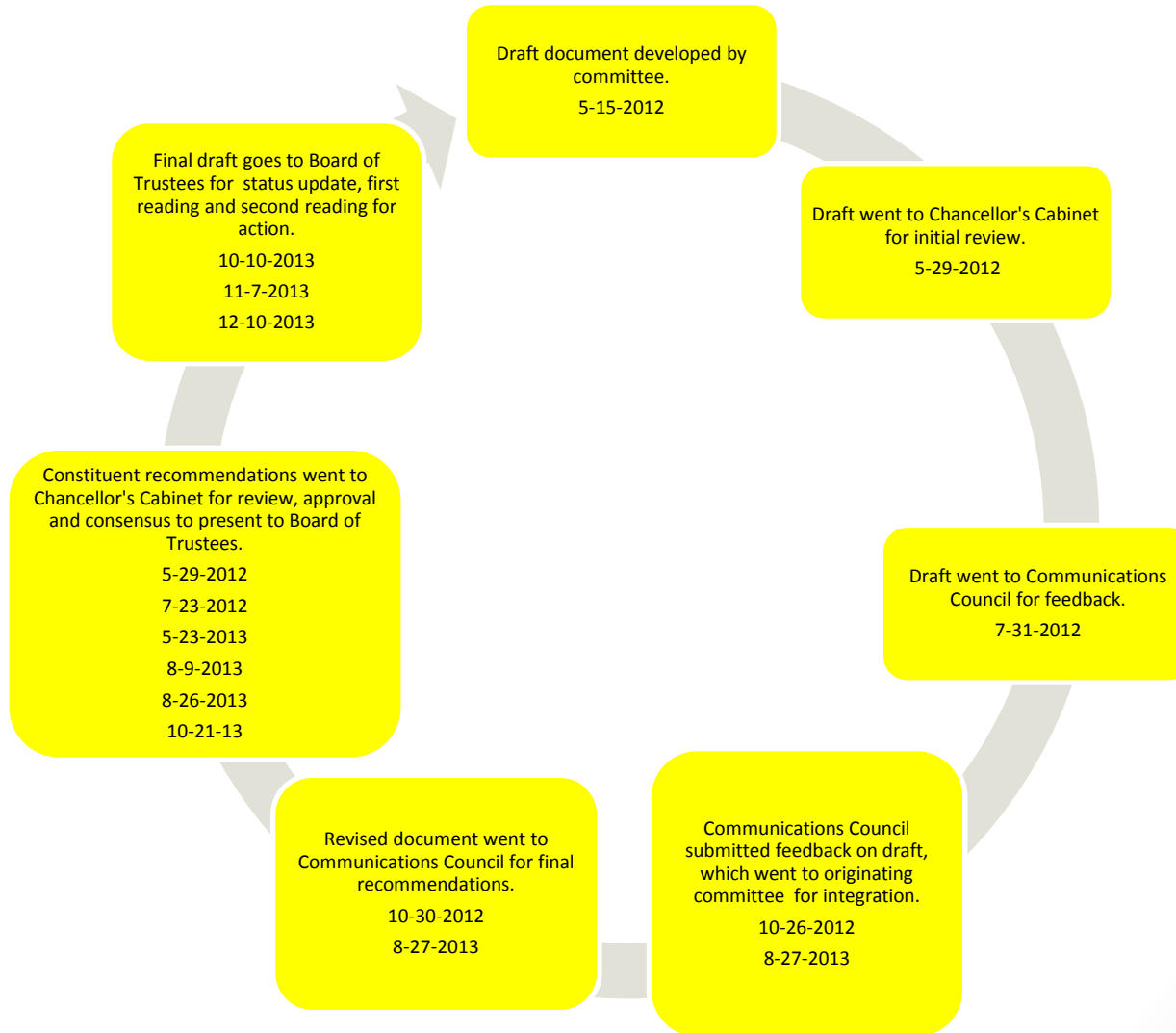
Introduction

- The *SCCCD Integrated Planning Model and Manual* was presented as a status update to the Board of Trustees at the October 10, 2013 meeting.
- As we continue to strive for mutual agreement with the Academic Senate consistent with *AR 2510: Participation in Local Decision-making*, we will continue collegial consultation and ongoing dialogue with constituency groups on the *SCCCD Integrated Planning Model and Manual* through November, 2013.
- Chancellor's Cabinet has reached agreement on the *SCCCD Integrated Planning Model and Manual* with RC and WI's Academic Senate and all Classified Senates and has continued to strive for mutual agreement through collegial consultation and ongoing dialogue with FCC's Academic Senate consistent with BP 2510 and AR 2510 *Participation in Local Decision-making*.
- Mutual agreement was not able to be reached as Chancellor's Cabinet could not accept FCC's Academic Senate recommendations in a memo dated September 27, 2013.

Introduction Cont'd

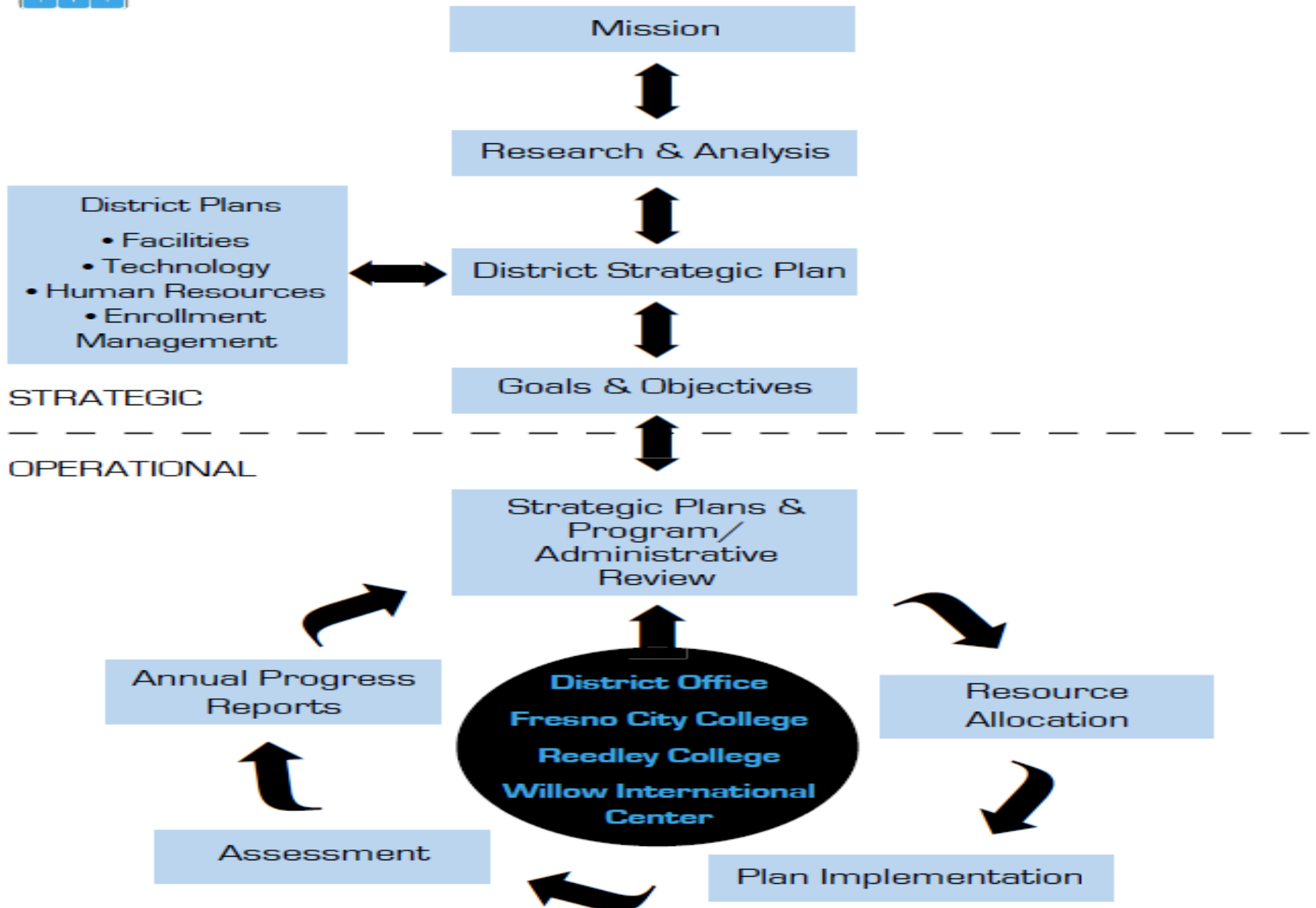
- It was presented for discussion at Chancellor's Cabinet on October 21, 2013. Cabinet clarified that the current manual is intended to depict the descriptions and timeline of only current planning processes, not future planning processes. They also discussed the recommendation to allow the district strategic plan to be vetted for approval at the colleges, which will also require an extension of the district's current planning timeline.
- Chancellor's Cabinet has decided not to accept the recommendations provided by FCC's Academic Senate as they agreed that accreditation would be concerned at district level planning timelines being extended, they feel there is a clear process in place that allows for feedback through the development of the plan if the representatives are accountable, there is a Charrette opportunity that is open to all stakeholders to provide additional feedback on the plan, and that committee representatives need to be held accountable to ensure information is shared and communication flows 2 ways.
- Chancellor's Cabinet also reviewed the integrated planning model and in response to the concerns that the model is top down, it is an expectation of accreditation that the Board of Trustees sets the mission which starts the planning process. But there are multiple areas where feedback is also sideways as the district functional plans such as facilities, technology, humans resources, etc. inform the plan and the plan informs their areas.
- There is also evidence that information from the colleges feed back up into the integrated planning process in the areas of Strategic & Functional Plans/ Annual Goals & Priorities/Program & Administrative Review. So there is not the perception that planning is only top down as the model clearly identifies feedback that goes up, down and sideways in the planning process.

Constituency Participation in Development of the *SCCCD Integrated Planning Model and Manual*





SCCCD District Integrated Planning Model



Next Steps

- The *SCCCD Integrated Planning Model and Manual* will be presented to the Board of Trustees in December for second reading and consideration for approval.
- Upon approval, the model will be implemented and assessed according to its schedule.
- With any significant changes to the planning components or timelines, the model will go to constituent groups for feedback.

Questions?