



STATE CENTER COMMUNITY COLLEGE DISTRICT FACILITIES MASTER PLAN DRAFT



NORTH CENTERS
TOWN HALL
MAY 2012



Facilities Master Planning Committees Structure

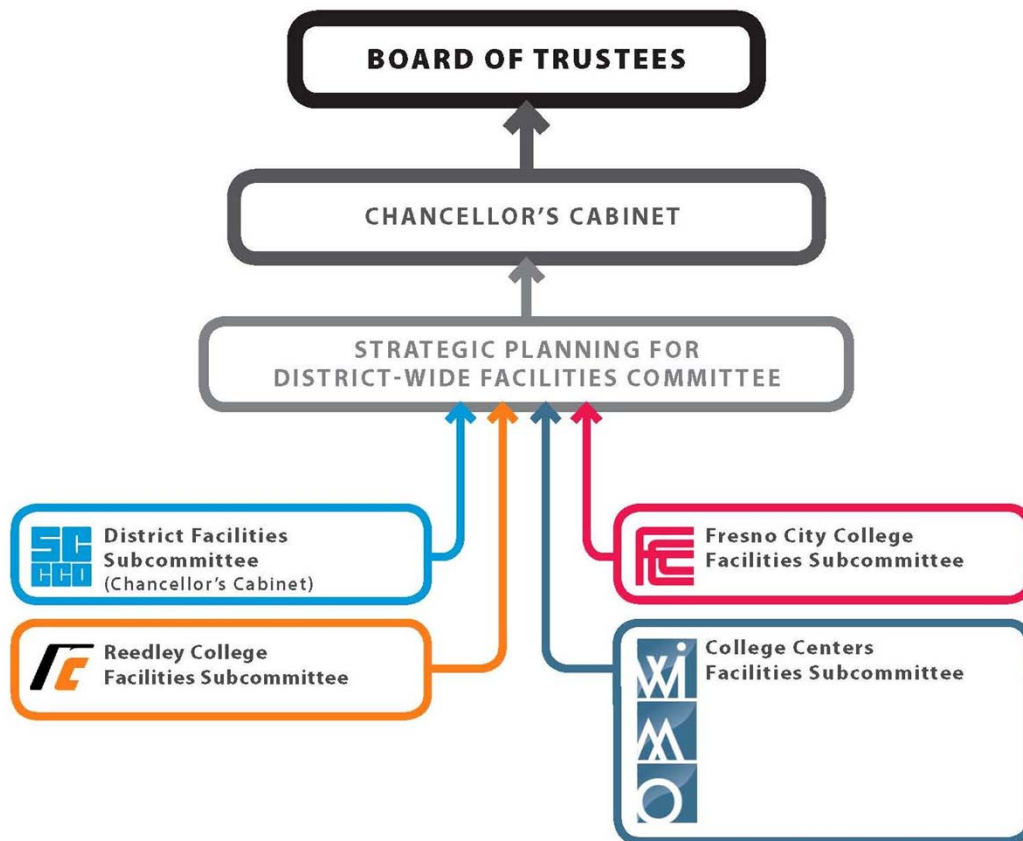


The planning process for the SCCC District Facilities Master Plan was highly participatory, engaging the many constituencies of the District. The Planning Team worked closely with multiple Planning Committees which included faculty, classified staff, administrators and students.

The Planning Committees had much to consider throughout the Master Planning process. Through a series of highly interactive meetings with each of the Site Facilities Sub-Committees, meetings which provided analysis of existing conditions, evaluation of a series of options and decision-making, culminated in the development of the 2012 District Wide Facilities Master Plan.

Additionally, presentations were held with the District Administration, Board of Trustees and the larger college community to provide opportunity for input and broaden the plan's perspective. The interactive planning process encouraged effective participation of numerous college stakeholders and led to recommendations that will be supported by the entire college community.

Facilities Master Planning Organizational Chart
State Center Community College District



Facilities Master Planning Team

darden
architects
Established 1959



Darden Architects

Martin E. Dietz, AIA, CCS, LEED AP
Robert L. Petithomme, AIA, LEED AP

Paul Halajian Architect

Paul N. Halajian, AIA

Blair Church and Flynn

Civil Engineer

TJKM

Transportation Consultant

Lars Anderson

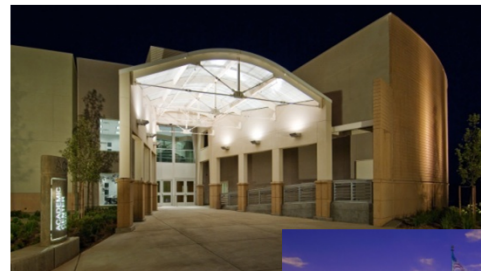
ADA Survey

Power and Communications Engineering

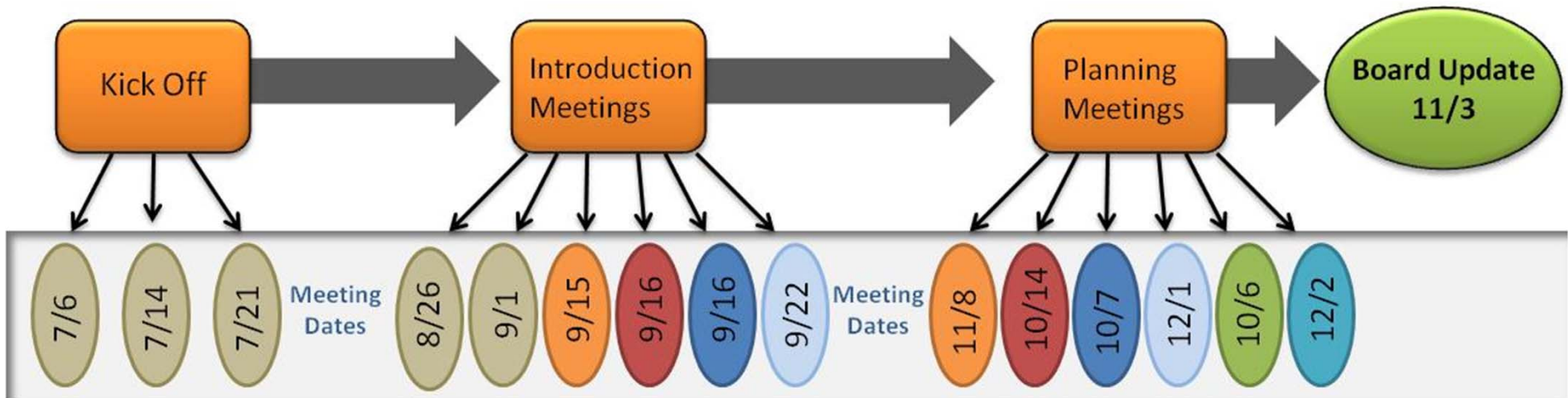
Electrical and Telecommunications

Robert Boro

Landscape Architect



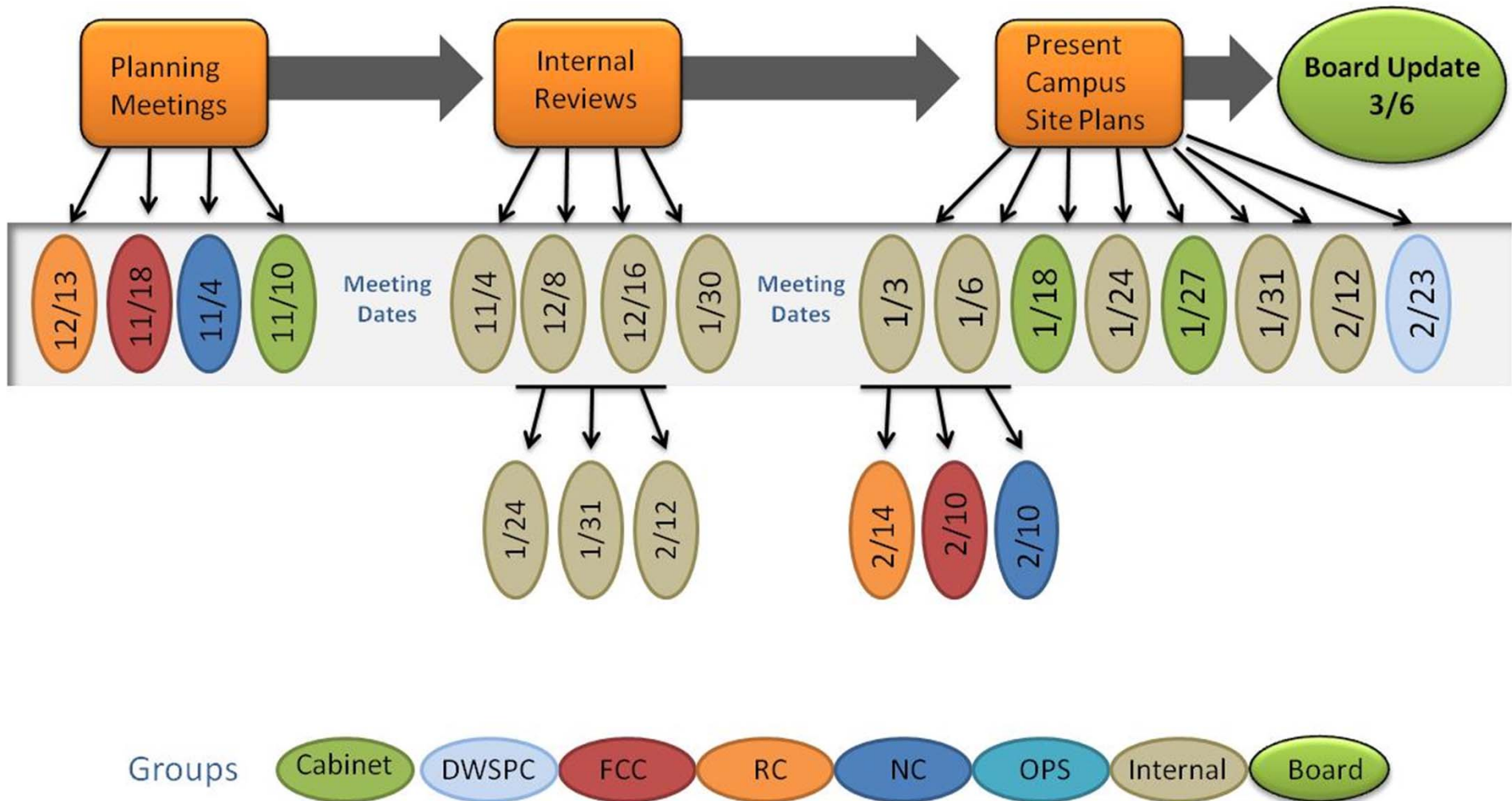
Meetings to Date July – November 2011



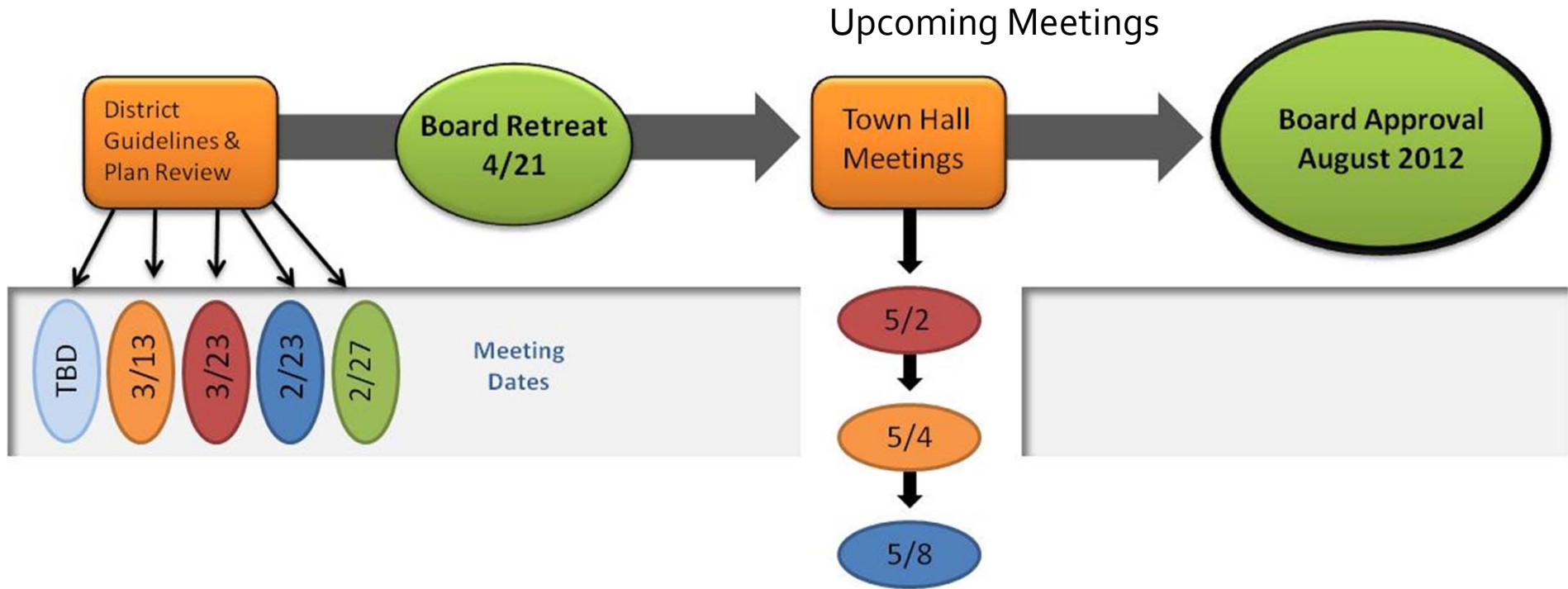
Groups



Meetings to Date November 2011 – March 2012



Meetings to Date March 2012 – May 2012



Connection to the Educational Master Plan



Completion of the Educational Master Plans

- Fresno City College
- Reedley College
- College Centers

Review of Educational Master Plans with the Authors

Analysis of the Educational Master Plans

Initial Focus

How can the Facilities Master Plan assist the District in achieving its Strategic Plan Goals and Objectives

Top Issues

- Campus Safety
- Transportation
- College Strengths and Weaknesses
- Most Common Perceptions
- What would provide Positive Immediate Impact
- Future Program of Instruction

Space and Growth Analysis



Connection to the Constituents



The Master Planning Team worked closely with Facilities Master Planning Sub Committees.

Key Faculty - Staff - Students - Administrators

Input from Facility Sub-Committees

- Analysis of existing conditions
- Analysis the Educational Planning Data
- Evaluation of options
- Preparation of Draft Master Plans

Draft Master Plan Presented to Chancellor’s Cabinet
Additional Input

Draft Master Plan Presented to Administration
Additional Input

Draft Master Plan Presented to Sub-Committees
Recommended Project Priorities

Draft Master Plans Presented to the Board of Trustees

Draft District Guidelines Presented to Sub-Committees

Draft District Guidelines Presented to Chancellor’s Cabinet

Final Draft Master Plans Presented to the Board of Trustees – Board Retreat



Facilities Master Plan Goals



Facilities Master Plan Goals

The facilities planning priorities were developed to include the following list of goals that focus on District-Wide Site and Facilities issues:

- Address the needs of the Educational Master Plan
- Growth projections
- Prioritize projects
- Replace portable buildings with permanent facilities
- Develop sites and facilities to attract students
- Encourage students and community members to spend time on campus
- Incorporate sustainable design principles in all development
- Consider life cycle costs and reduce maintenance needs
- Address ADA issues and increase accessibility

District Wide Master Plan Facility Guidelines and Standards



Sustainability Guidelines



Energy Efficiency Guidelines



Modernization Standards



Accessibility Guidelines



Technology Standards



Landscape / Irrigation Policy Goals



Total Cost of Ownership



Land Resource Utilization Public Private Partnerships

Campus Wayfinding Design Guidelines

The Sign and Wayfinding system in a College environment must support the full spectrum of user situations. From visits by out-of-towners, groups attending special events, prospective students visiting the campus, and current campus users; these groups need a navigation system with a clear hierarchy of messages that are integrated into the campus and community environment.

The Signage and Wayfinding system should function as a unifying element of the campus environment. It defines meeting destinations, building purposes, and recognition of accessible code compliance; all of which are part of the daily campus user experience.

The integration of a standard college sign system within the city fabric and campus environment results in a memorable visitor experience. A consistent system can capture the institution's unique sense of place and offer a branding opportunity.

Architectural signage strategy should complement the architectural style. The use of venerable materials is preferred for their longevity. Material selection would need to withstand both physical and climactic abuse.

- A campus-wide typeface should be adhered to.
- Architectural signage should be typical in size throughout all buildings.
- Architectural signage should be located in a prominent position at main entrances.
- Signage should be lighted to facilitate its role as a wayfinding device.
- Architectural signage should be clear, explicit, and conforming to defined architectural standards in colors, graphics and textures.
- Guidelines and minimum standards shall be established and approval granted in accordance with the process as defined in these guidelines.



Building Directional Signage



Automobile Directional Sign



Pedestrian Wayfinding Directory



Building Identification - Large

FACILITY MASTER PLANS

Facilities Master Plan

Oakhurst Campus

Facilities Master Plan

Permanent Facilities

- Remove Portable Buildings
- Construct Permanent Building
- Community Space, Conference, Retreat



OAKHURST CAMPUS

Existing Campus

darden
architects
Established 1959



OAKHURST CAMPUS

Long Range Master Plan

darden
architects
Established 1959



Madera Center

Facilities Master Plan



Growth - Expansion

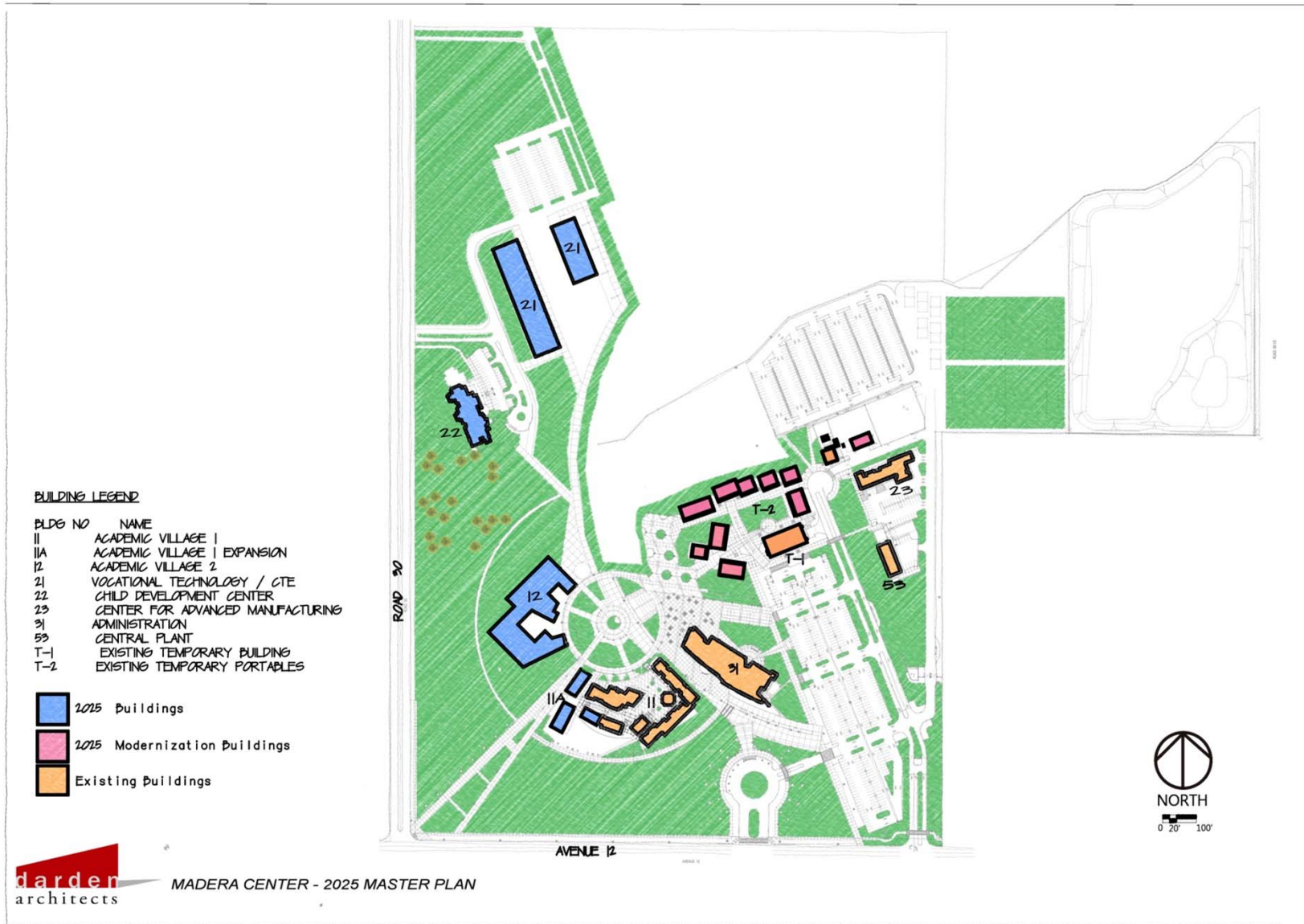
- Academic Village One Expansion
LVN Labs and Offices for Nurses
- Child Development Center
- Modernize Portables
- Vocational Buildings
- Athletic Fields
- Academic Village Two



MADERA CENTER

2025 Master Plan

darden
architects
Established 1959



MADERA CENTER

Long Range Master Plan

darden
architects
Established 1959



BUILDING LEGEND

BLDG NO	NAME
11	ACADEMIC VILLAGE 1
11A	ACADEMIC VILLAGE 1 - EXPANSION
12	ACADEMIC VILLAGE 2
21	VOCATIONAL TECHNOLOGY
22	CHILD DEVELOPMENT CENTER
31	ADMINISTRATION
41	LEARNING RESOURCE CENTER
42	CAFETERIA / BOOKSTORE
43	SNACK BAR
61	GYMNASIUM
62	SHOWER / LOCKER
63	PERFORMING ARTS COMPLEX
64	AQUATIC CENTER
51	PLANT SHOPS / PLANT OPERATIONS
53	CENTRAL PLANT
54	SHIPPING / RECEIVING / WAREHOUSE

- MASTER PLAN BUILD-OUT
- 2015 Buildings
- Existing Buildings



MADERA CENTER - LONG RANGE MASTER PLAN

MADERA CENTER

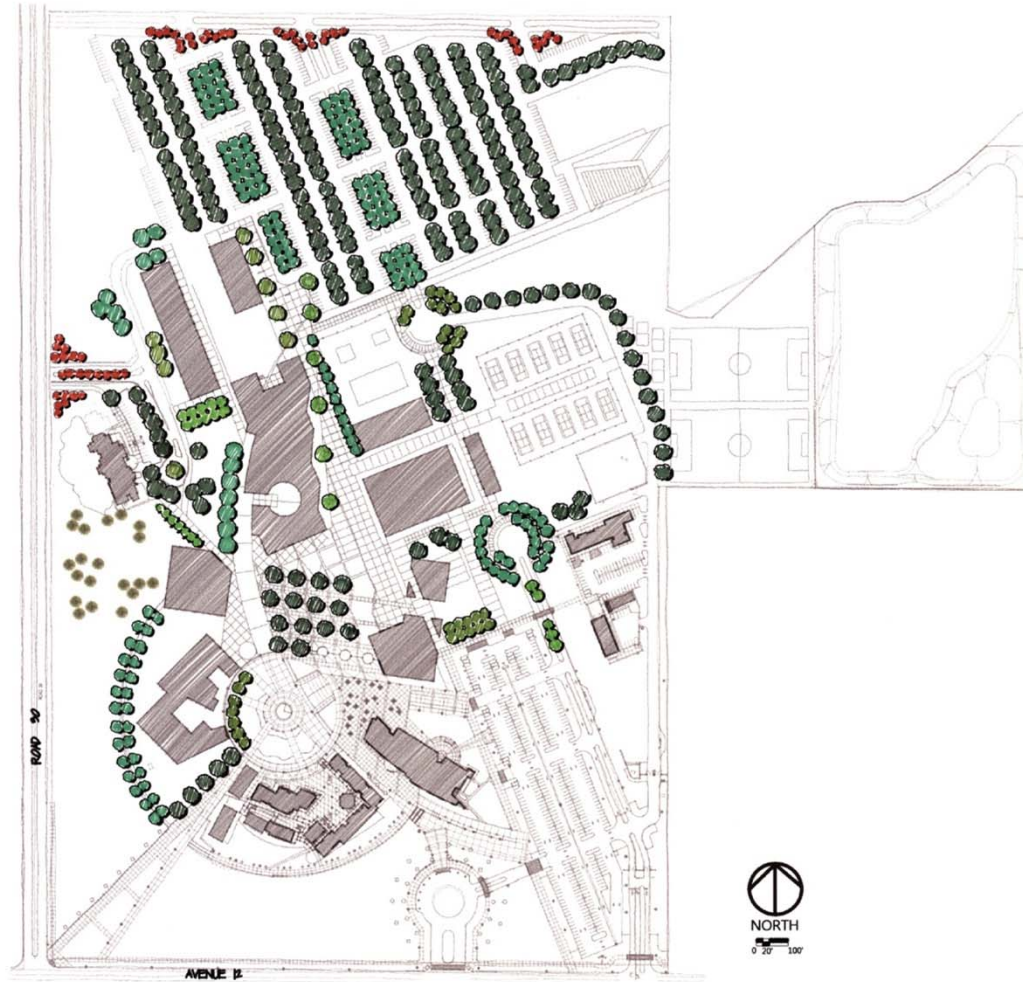
Long Range Landscape Master Plan

darden
architects
Established 1959



MADERA CENTER LONG RANGE MASTER PLAN

Landscape Master Plan



MADERA CENTER

Committee Recommendations Projects / Priorities / Phasing



Phase I Academic Village One Expansion

LVN –Nursing Labs
Offices
Classrooms
Large Group Instruction
Library/Tutorial

Current Approved FPP

None

Current Approved IPP

None

Phase II Child Development Center

Phase III Modernize Portables

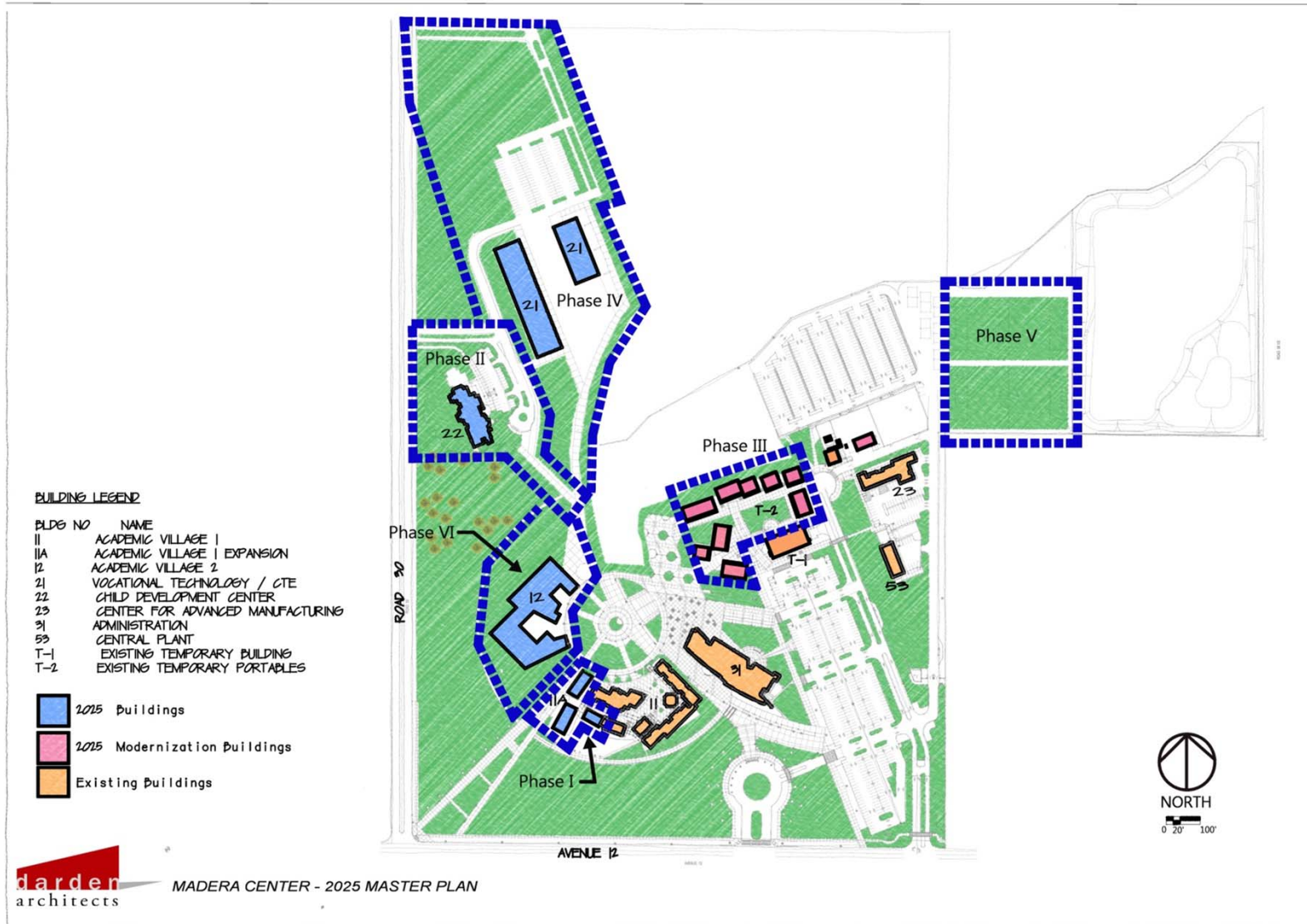
Phase IV Vocational Buildings

Phase V Athletic Fields

Phase VI Academic Village Two

MADERA CENTER

Project Phasing



Willow International Community College Center

Facilities Master Plan



Growth - Expansion

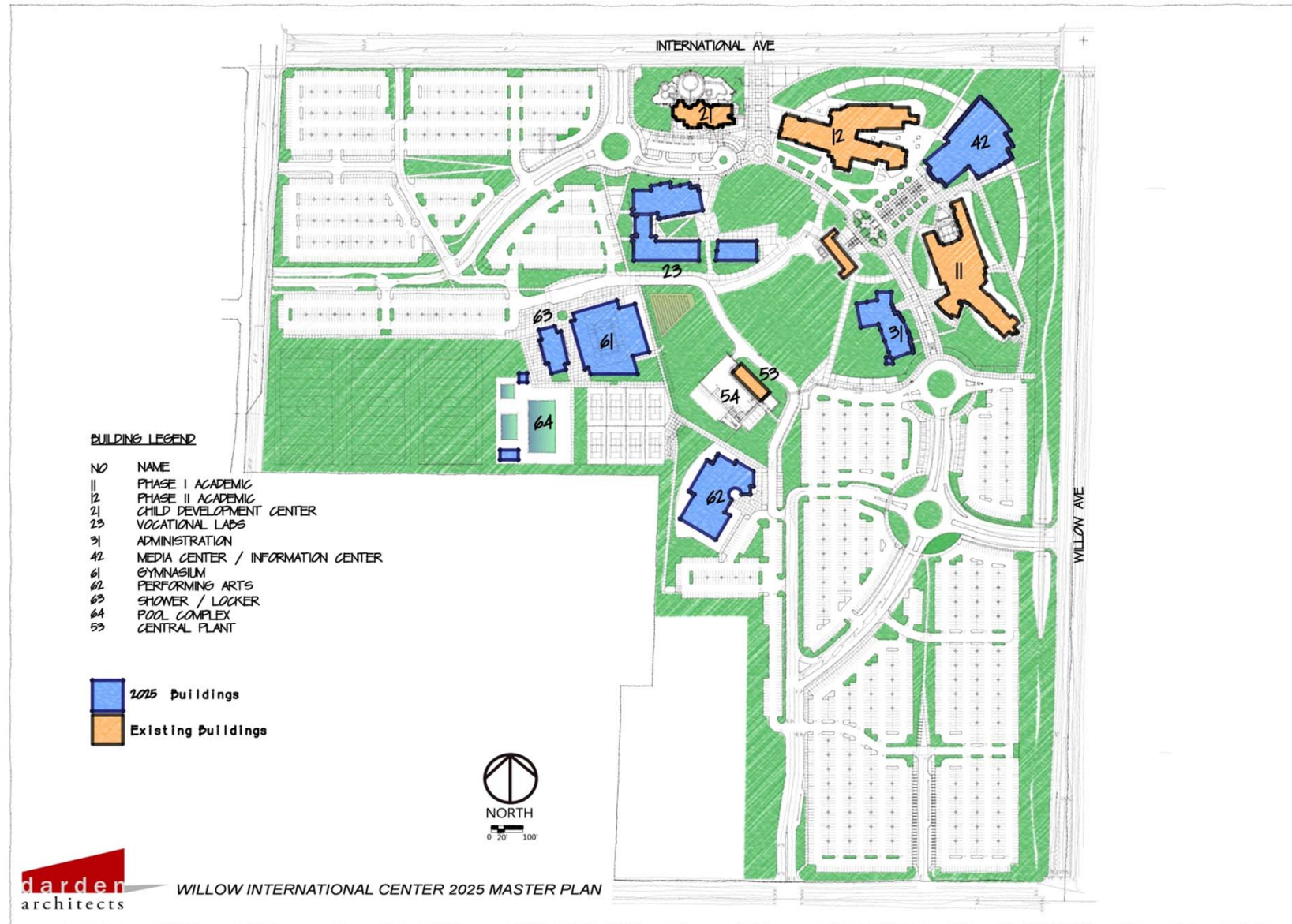
- Vocational – CTE
- Athletics:
 - Soccer Fields
 - Develop Field House (Shower/Locker)
- Performing Arts Building
- Gymnasium
 - Tennis courts
 - Pools - 50 Meter - Diving/Water Polo
- Library - Learning Resource Center
- Administration / Student Services



1. Vocational – CTE
2. Athletics:
 - Soccer Fields
 - Develop Field House (Shower/Locker)
3. Performing Arts Building
4. Gymnasium
 - Tennis courts
 - Pools - 50 Meter and Diving/Water Polo
5. Library - Learning Resource Center
6. Administration / Student Services

WILLOW INTERNATIONAL COMMUNITY COLLEGE CENTER

2025 Master Plan



WILLOW INTERNATIONAL COMMUNITY COLLEGE CENTER

Long Range Master Plan



WILLOW INTERNATIONAL COMMUNITY COLLEGE CENTER

Long Range Landscape Master Plan



WILLOW-INTERNATIONAL CENTER LONG RANGE MASTER PLAN
Landscape Master Plan



**WILLOW
INTERNATIONAL
COMMUNITY COLLEGE
CENTER**

**Committee Recommendations
Projects / Priorities / Phasing**



Phase I Vocational – CTE

Current Approved FPP

None

Phase II Athletics:

Soccer Fields

Develop Field House (Shower/Locker)

Current Approved IPP

None

Phase III Performing Arts Building

Phase IV Gymnasium

Tennis courts

Pools - 50 Meter and Diving/Water Polo

Phase V Library - Learning Resource Center

Phase VI Administration / Student Services

WILLOW INTERNATIONAL COMMUNITY COLLEGE CENTER

Project Phasing





STATE CENTER COMMUNITY COLLEGE DISTRICT FACILITIES MASTER PLAN DRAFT



NORTH CENTERS
TOWN HALL
MAY 2012

