



# STATE CENTER COMMUNITY COLLEGE DISTRICT FACILITIES MASTER PLAN DRAFT



Board Retreat  
April 2012



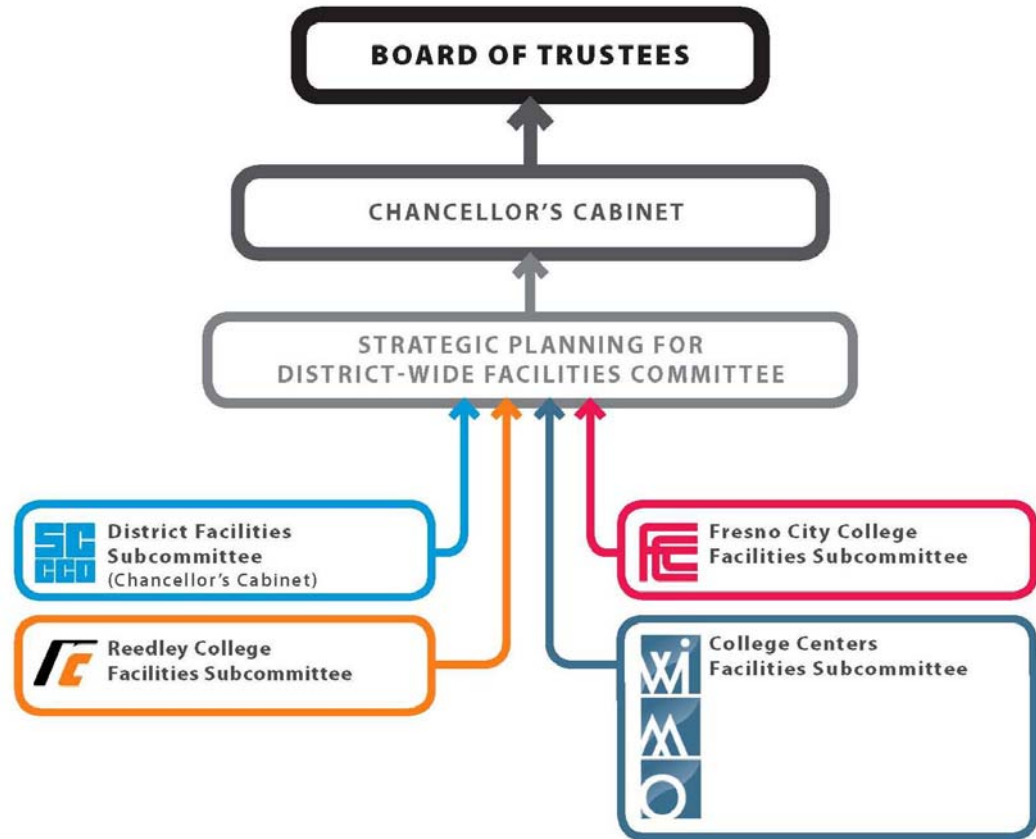
# Facilities Master Planning Committees Structure

The planning process for the SCCC District Facilities Master Plan was highly participatory, engaging the many constituencies of the District. The Planning Team worked closely with multiple Planning Committees which included faculty, classified staff, administrators and students.

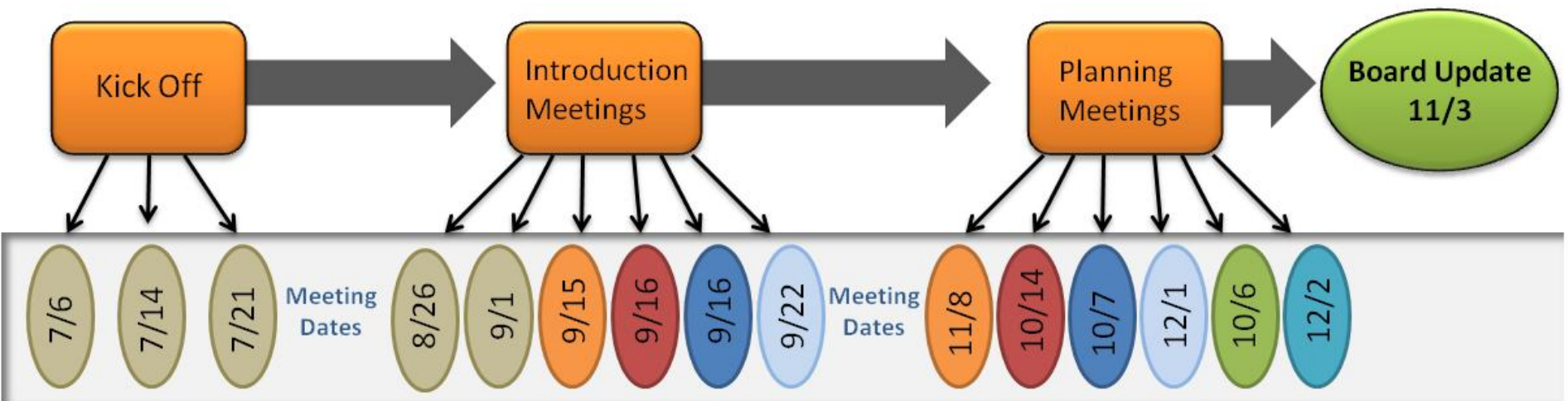
The Planning Committees had much to consider throughout the Master Planning process. Through a series of highly interactive meetings with each of the Site Facilities Sub-Committees, meetings which provided analysis of existing conditions, evaluation of a series of options and decision-making, culminated in the development of the 2012 District Wide Facilities Master Plan.

Additionally, presentations were held with the District Administration, Board of Trustees and the larger college community to provide opportunity for input and broaden the plan's perspective. The interactive planning process encouraged effective participation of numerous college stakeholders and led to recommendations that will be supported by the entire college community.

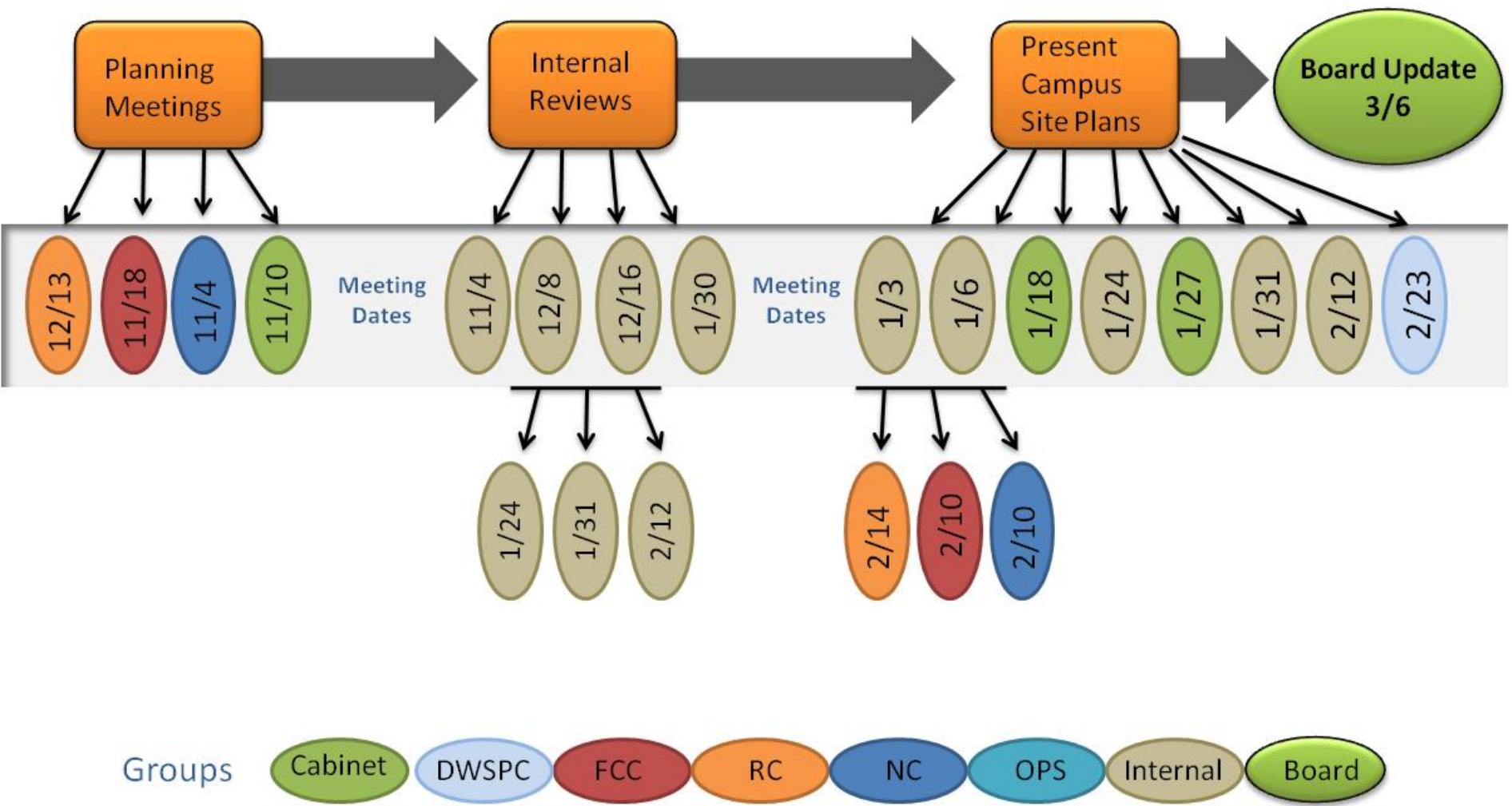
**Facilities Master Planning Organizational Chart**  
State Center Community College District



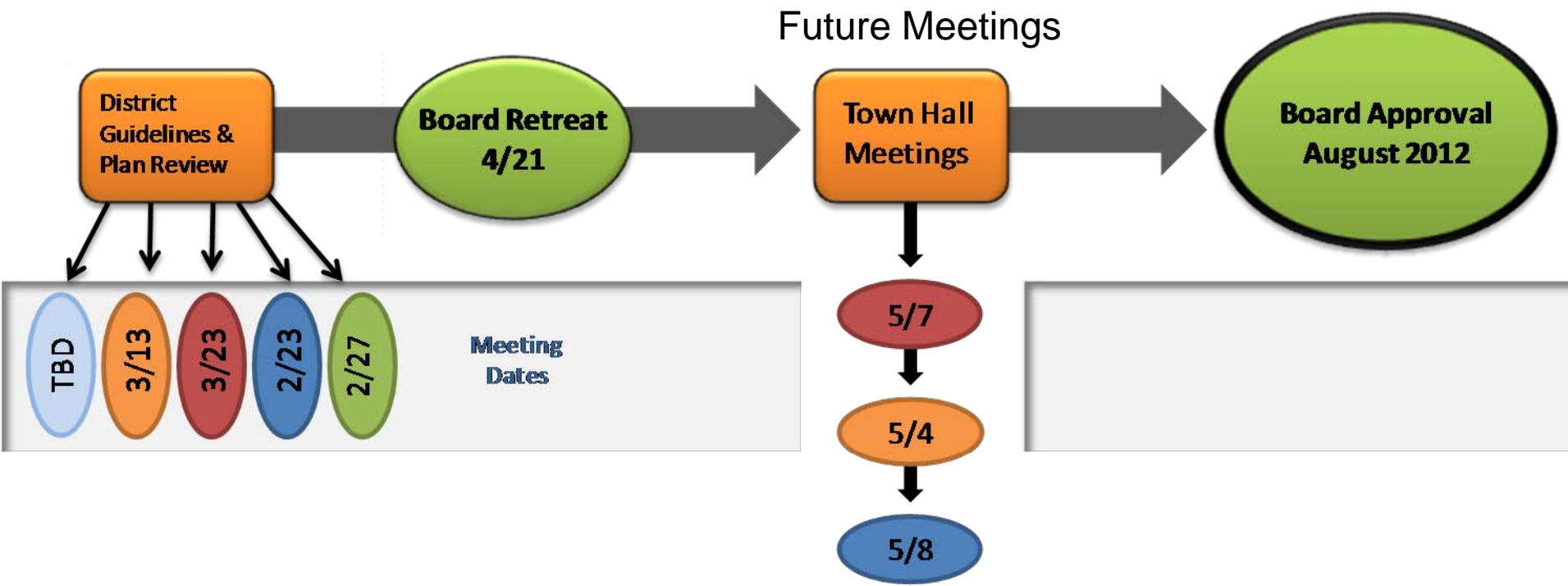
# Meetings to Date July – November 2011



# Meetings to Date November 2011 – March 2012



# Meetings Feb 2012 – May 2012



- Groups**
- Cabinet
  - DWSPC
  - FCC
  - RC
  - NC
  - OPS
  - Internal
  - Board

# Connection to the Educational Master Plan

## Completion of the Educational Master Plans

Fresno City College  
Reedley College  
College Centers

## Review of Educational Master Plans with the Authors

## Analysis of the Educational Master Plans

## Initial Focus

How can the Facilities Master Plan assist the District in achieving its Strategic Plan Goals and Objectives

## Top Issues

Campus Safety  
Transportation  
College Strengths and Weaknesses  
Most Common Perceptions  
What would provide Positive Immediate Impact  
Future Program of Instruction

## Space and Growth Analysis





# Connection to the Constituents

The Master Planning Team worked closely with Facilities Master Planning Sub Committees.

Key Faculty - Staff - Students - Administrators

Input from Facility Sub-Committees

Analysis of existing conditions

Analysis the Educational Planning Data

Evaluation of options

Preparation of Draft Master Plans

Draft Master Plan Presented to Chancellor’s Cabinet

Additional Input

Draft Master Plan Presented to Administration

Additional Input

Draft Master Plan Presented to Sub-Committees

Recommended Project Priorities

Draft Master Plans Presented to the Board of Trustees

Draft District Guidelines Presented to Sub-Committees

Draft District Guidelines Presented to Chancellor’s Cabinet



# Facilities Master Plan Goals



## Facilities Master Plan Goals

The facilities planning priorities were developed to include the following list of goals that focus on District-Wide Site and Facilities issues:

- Address the needs of the Educational Master Plan
- Growth projections
- Prioritize projects
- Replace portable buildings with permanent facilities
- Develop sites and facilities to attract students
- Encourage students and community members to spend time on campus
- Incorporate sustainable design principles in all development
- Consider life cycle costs and reduce maintenance needs
- Address ADA issues and increase accessibility





# Facilities Master Plan Purpose and Process

## Facilities Master Plan Purpose

Respond to the District's 2009-2010 Educational Master Plans.

A guide for future Development Facilities Master Plan provides a 'blueprint'

- Placement of future facilities

- Removal of existing facilities

- Renovation of existing facilities

- Site improvements

- Develop District Wide Standards

## Facilities Master Plan Process

Highly participatory

Facilities Master Planning Committee meetings

- Key Faculty

- Staff

- Students

- Administrators

Review by all levels of the District Administration

# District Wide Master Plan Facility Guidelines and Standards



Sustainability Guidelines



Energy Efficiency Guidelines



Modernization Standards



Accessibility Guidelines



Technology Standards



Landscape / Irrigation Policy Goals



Total Cost of Ownership



Land Resource Utilization Public Private Partnerships



# Fresno City College

## Facilities Master Plan



## Parking

- Parking Expansion
- Relocation of Softball and Tennis
- Relocation of Applied Tech

## Circulation

- Segregate Cars from Pedestrians
- Create Drop-offs
- Stronger Connections to Campus Core
- Reinforce Existing Campus Axis

## Image

- Selective Removal of Buildings
- Bring Campus to the Street
- New Face along Campus Edge
- Reinforce Collegiate Atmosphere

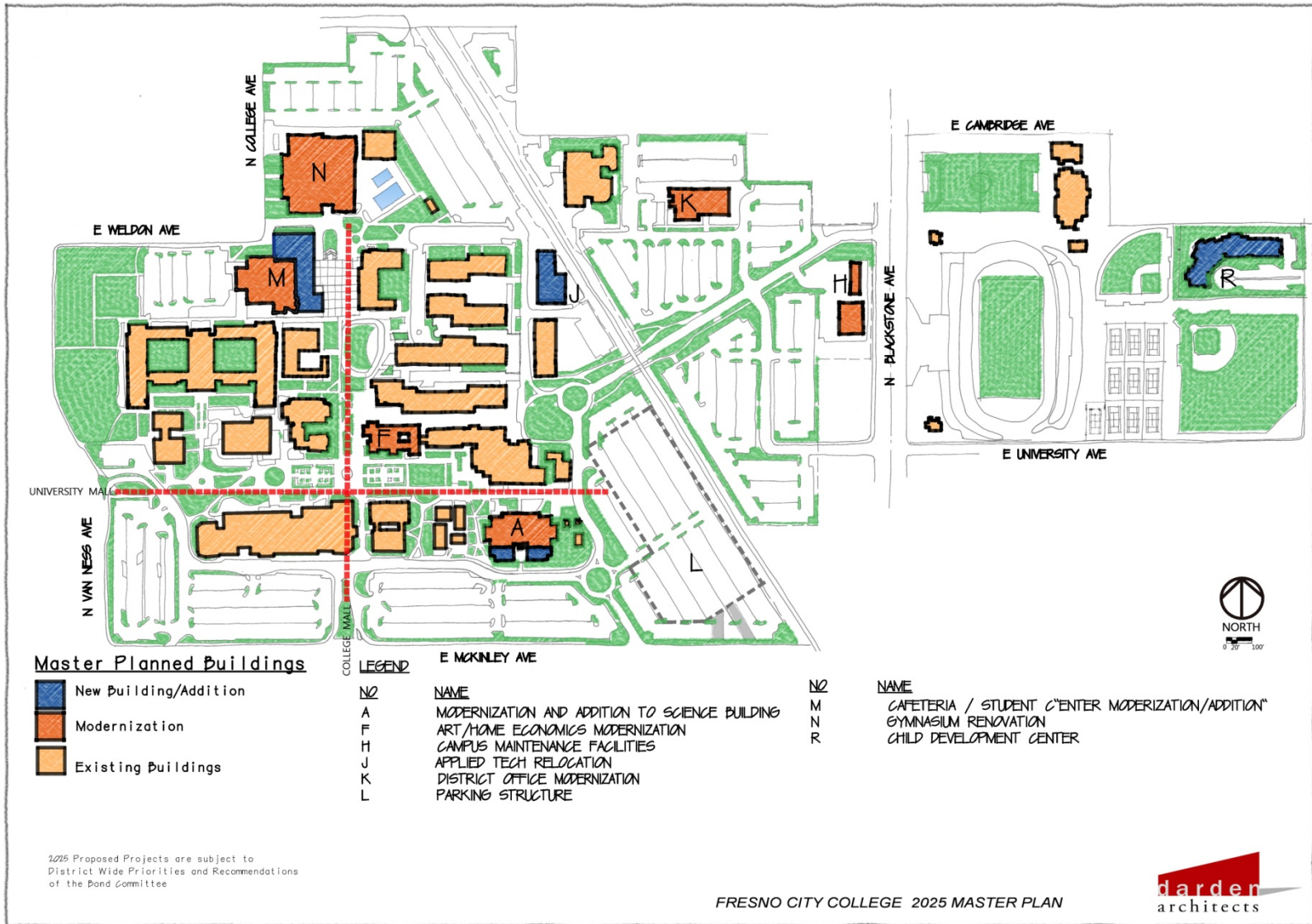
## Facility Needs

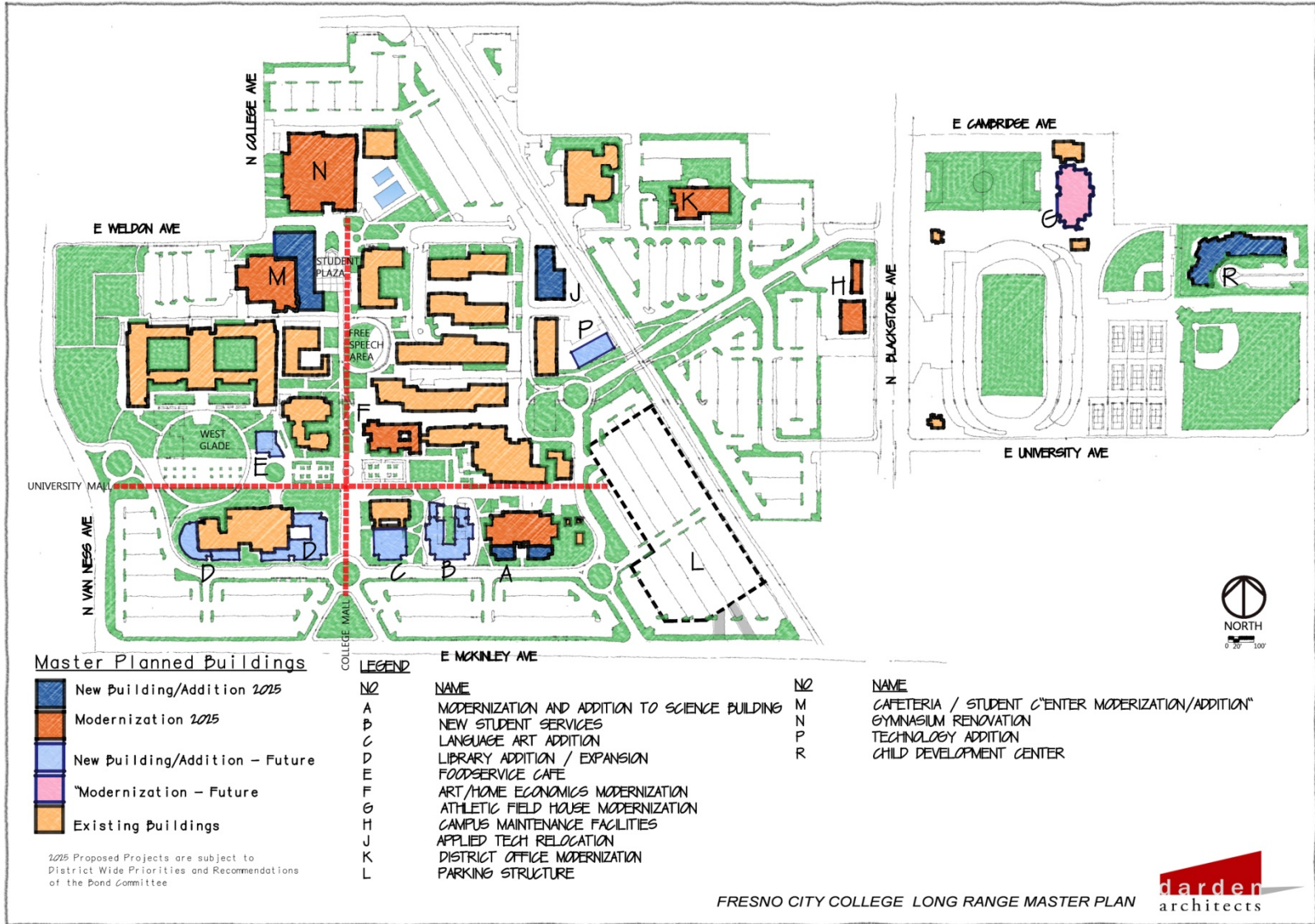
- Math/Science Addition/Modernization
- Art/Home Economics Modernization
- Gym Modernization
- Cafeteria/Student Union Addition and Modernization
- Modernization of Current District Operations

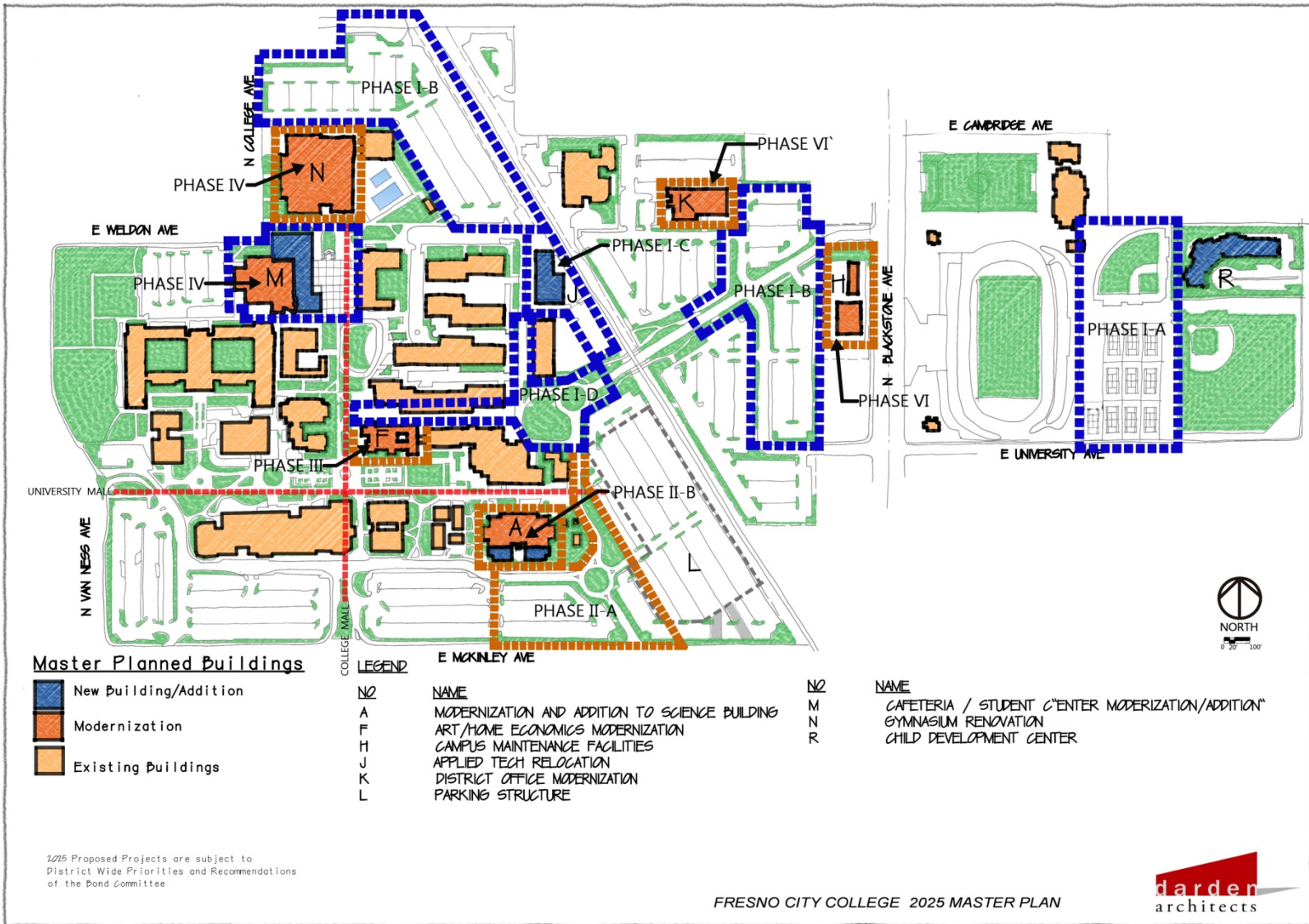


# FRESNO CITY COLLEGE

# 2025 Master Plan









# Reedley College

## Facilities Master Plan





## Parking

- Increase Parking
- Improved Access

## Circulation

- Connect Parking Lots
- Reinforce Existing Campus Axis

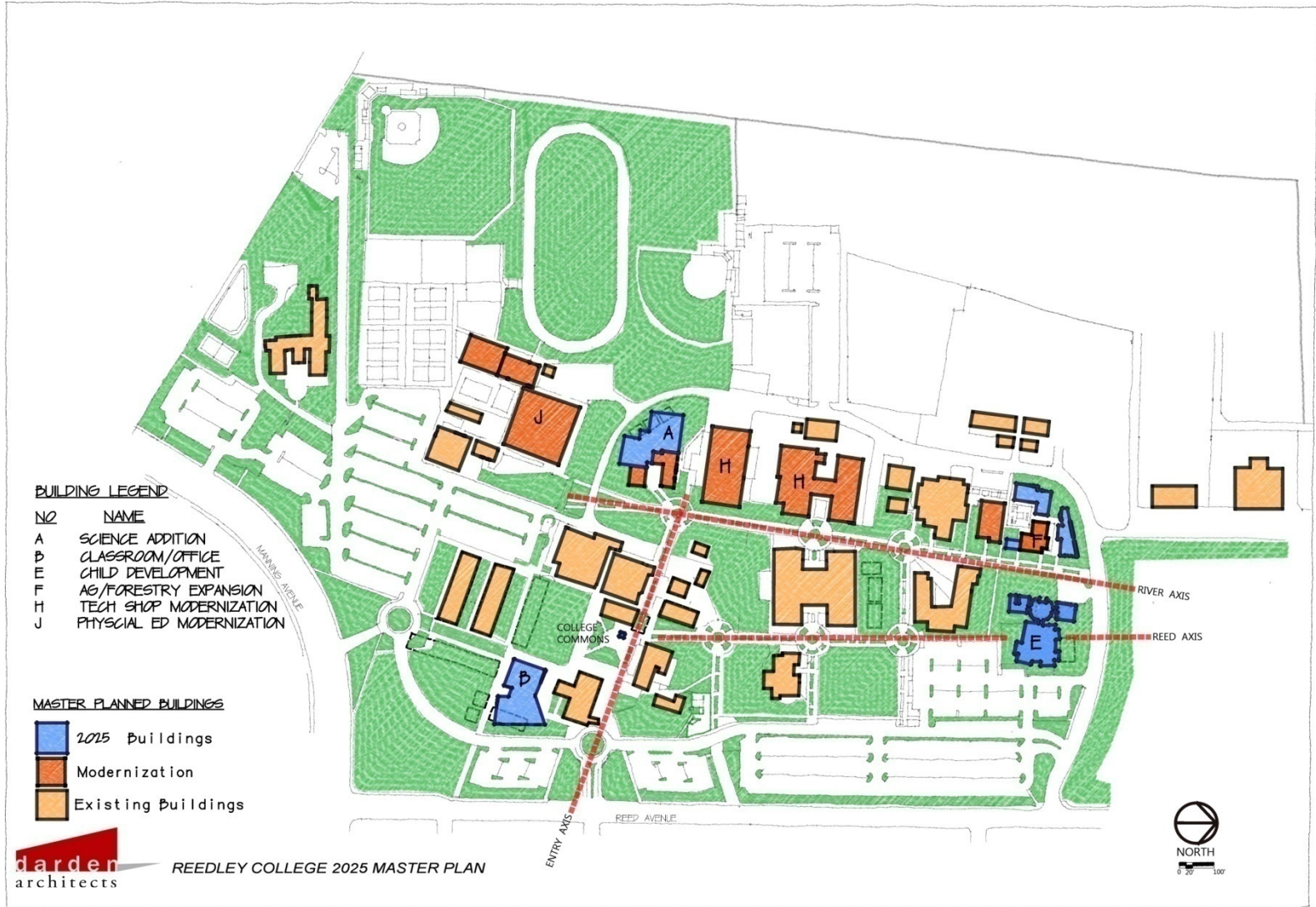
## Image

- Create Collegiate Atmosphere
- Create New Campus Face

## Facility Needs

- Science Expansion
- Ag / Tech Expansion Modernization
- Improve Classroom Functionality
- Classroom / Offices





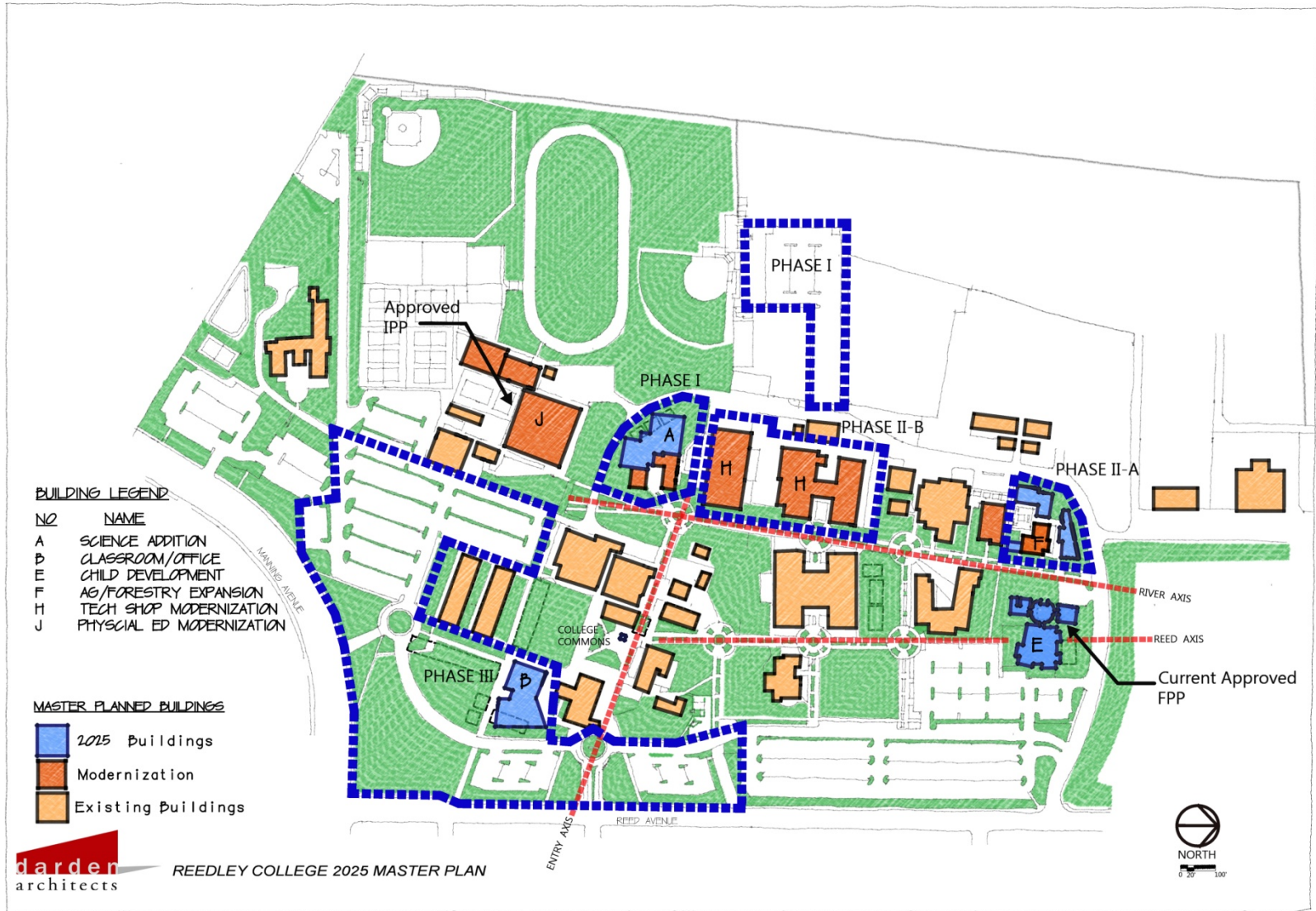
**BUILDING LEGEND**

NO	NAME
A	SCIENCE ADDITION
B	CLASSROOM / ADMIN
C	CLASSROOM / LABS
D	STUDENT SERVICES
E	CHILD DEVELOPMENT
F	AG/FORESTRY EXPANSION
G	ATHLETIC FIELD HOUSE
H	TECH SHOP MODERNIZATION
J	PHYSICAL ED MODERNIZATION

**MASTER PLANNED BUILDINGS**

- 2015 Buildings
- Modernization
- Master Planned Buildings
- Existing Buildings







# Madera Center

## Facilities Master Plan



## Growth - Expansion

- Academic Village One Expansion  
LVN Labs and Offices for Nurses
- Child Development Center
- Modernize Portables
- Vocational Buildings
- Athletic Fields
- Academic Village Two



# MADERA CENTER

# 2025 Master Plan

**BUILDING LEGEND**

BLDG NO	NAME
11	ACADEMIC VILLAGE 1
11A	ACADEMIC VILLAGE 1 EXPANSION
12	ACADEMIC VILLAGE 2
21	VOCATIONAL TECHNOLOGY / CTE
22	CHILD DEVELOPMENT CENTER
23	CENTER FOR ADVANCED MANUFACTURING
31	ADMINISTRATION
53	CENTRAL PLANT
T-1	EXISTING TEMPORARY BUILDING
T-2	EXISTING TEMPORARY PORTABLES

- 2025 Buildings
- 2025 Modernization Buildings
- Existing Buildings



# MADERA CENTER

# Long Range Master Plan

**BUILDING LEGEND**

BLDS NO NAME

- II ACADEMIC VILLAGE 1
- IIA ACADEMIC VILLAGE 1 - EXPANSION
- 12 ACADEMIC VILLAGE 2
- 21 VOCATIONAL TECHNOLOGY
- 22 CHILD DEVELOPMENT CENTER
- 31 ADMINISTRATION
- 41 LEARNING RESOURCE CENTER
- 42 CAFETERIA / BOOKSTORE
- 43 SNACK BAR
- 61 GYMNASIUM
- 62 SHOWER/LOCKER
- 63 PERFORMING ARTS COMPLEX
- 64 AQUATIC CENTER
- 51 PLANT SHOPS / PLANT OPERATIONS
- 53 CENTRAL PLANT
- 54 SHIPPING / RECEIVING / WAREHOUSE

- MASTER PLAN BUILD-OUT
- 2015 Buildings
- Existing Buildings

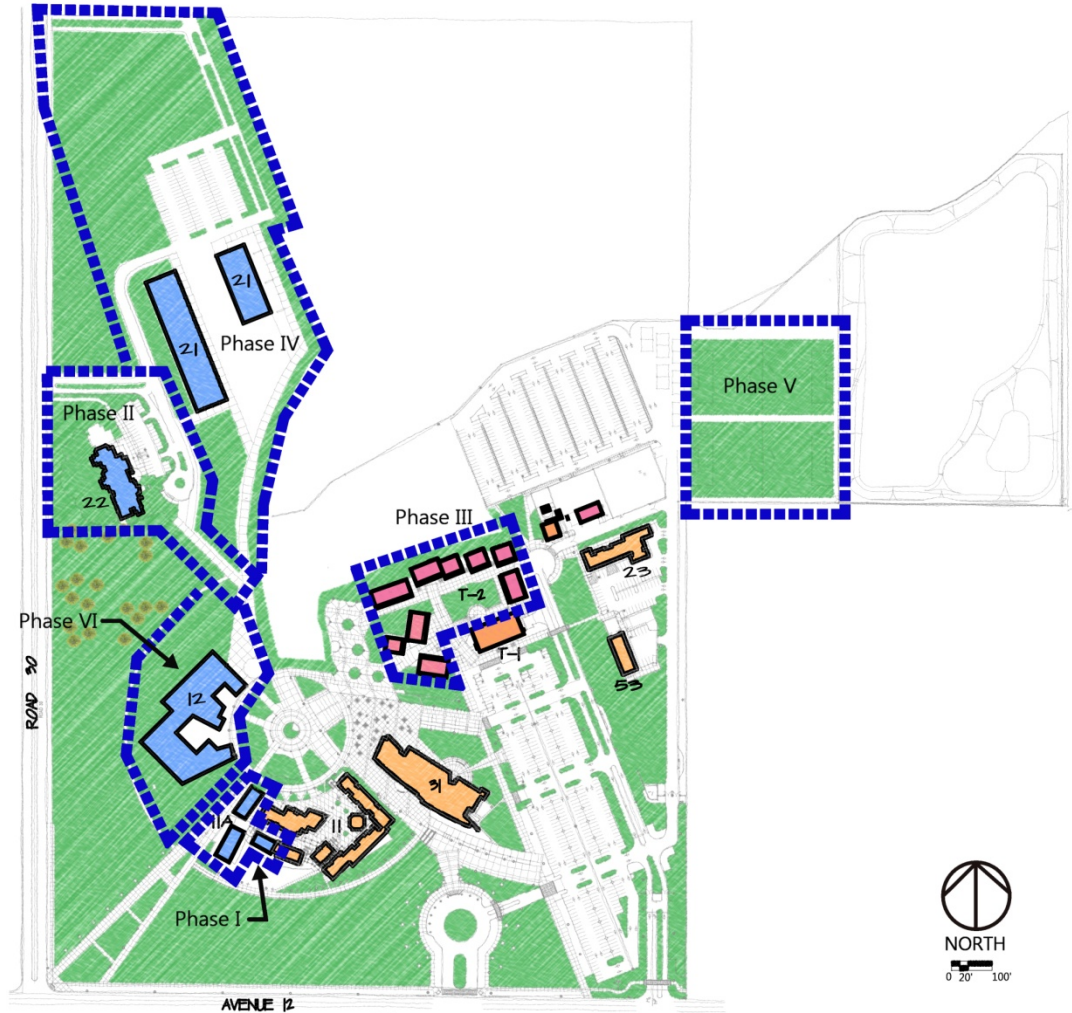




**BUILDING LEGEND**

BLDG NO	NAME
II	ACADEMIC VILLAGE 1
IIA	ACADEMIC VILLAGE 1 EXPANSION
12	ACADEMIC VILLAGE 2
21	VOCATIONAL TECHNOLOGY / CTE
22	CHILD DEVELOPMENT CENTER
23	CENTER FOR ADVANCED MANUFACTURING
31	ADMINISTRATION
53	CENTRAL PLANT
T-1	EXISTING TEMPORARY BUILDING
T-2	EXISTING TEMPORARY PORTABLES

- 2015 Buildings
- 2015 Modernization Buildings
- Existing Buildings





# Oakhurst Campus

## Facilities Master Plan



## Permanent Facilities

- Remove Portable Buildings
- Construct Permanent Building
- Community Space, Conference, Retreat



# OAKHURST CAMPUS

# Existing Campus



# OAKHURST CAMPUS

# Long Range Master Plan



**OakhurstCenter**  
State Center Community  
College District  
Site Plan | Perspectives



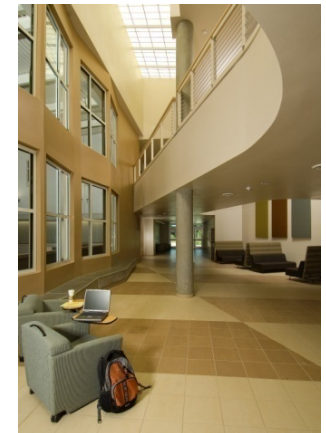
# Willow International Community College Center

## Facilities Master Plan



## Growth - Expansion

- Vocational – CTE
- Athletics:
  - Soccer Fields
  - Develop Field House (Shower/Locker)
- Performing Arts Building
- Gymnasium
  - Tennis courts
  - Pools - 50 Meter - Diving/Water Polo
- Library - Learning Resource Center
- Administration / Student Services





# WILLOW INTERNATIONAL COMMUNITY COLLEGE CENTER

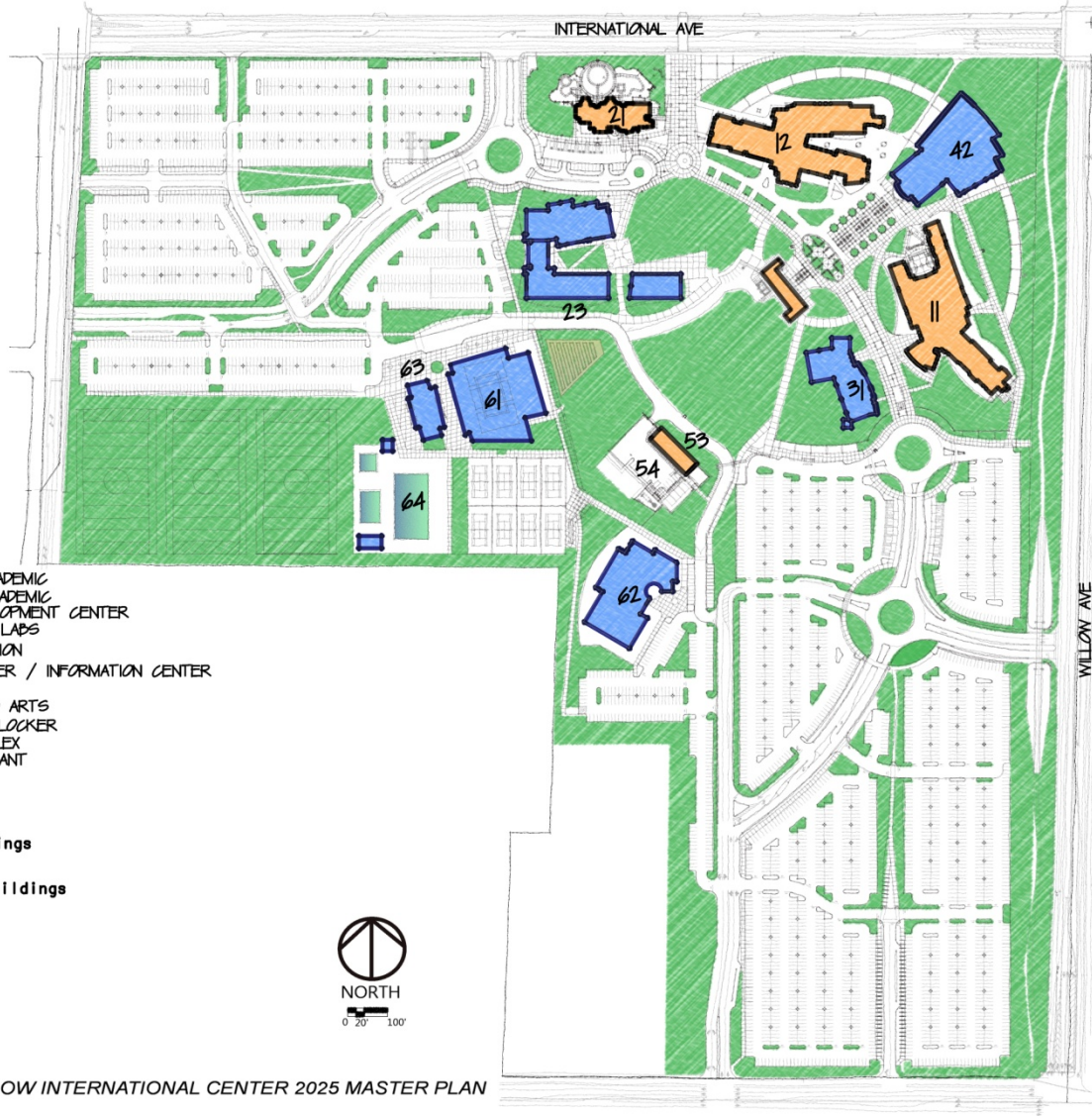
## 2025 Master Plan

**BUILDING LEGEND**

NO	NAME
11	PHASE I ACADEMIC
12	PHASE II ACADEMIC
21	CHILD DEVELOPMENT CENTER
23	VOCATIONAL LABS
31	ADMINISTRATION
42	MEDIA CENTER / INFORMATION CENTER
61	GYMNASIUM
62	PERFORMING ARTS
63	SHOWER / LOCKER
64	POOL COMPLEX
53	CENTRAL PLANT

 2025 Buildings

 Existing Buildings





# WILLOW INTERNATIONAL COMMUNITY COLLEGE CENTER

## Long Range Master Plan



# WILLOW INTERNATIONAL COMMUNITY COLLEGE CENTER

## Project Phasing





# South East Center

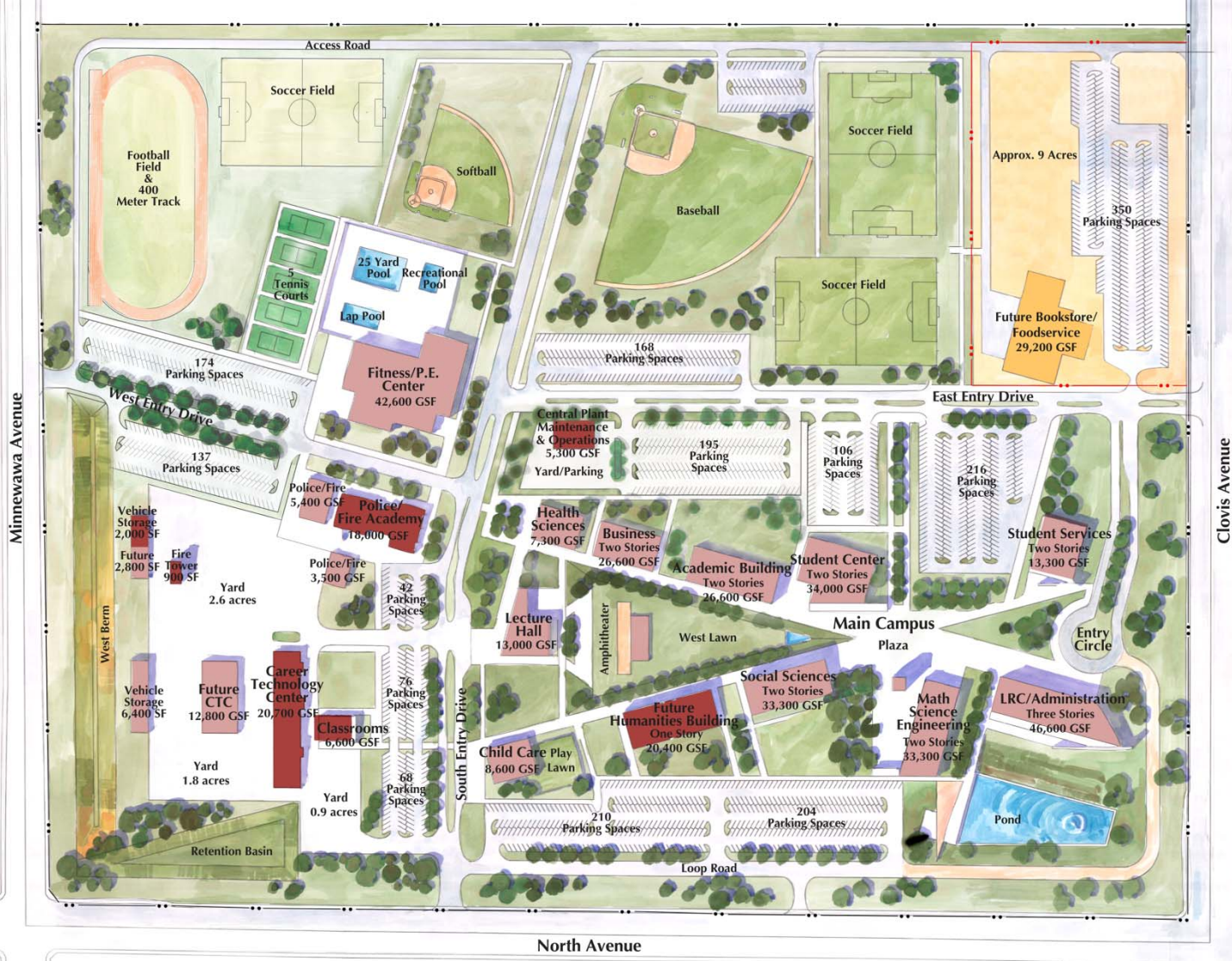
## Facilities Master Plan





# South East Center

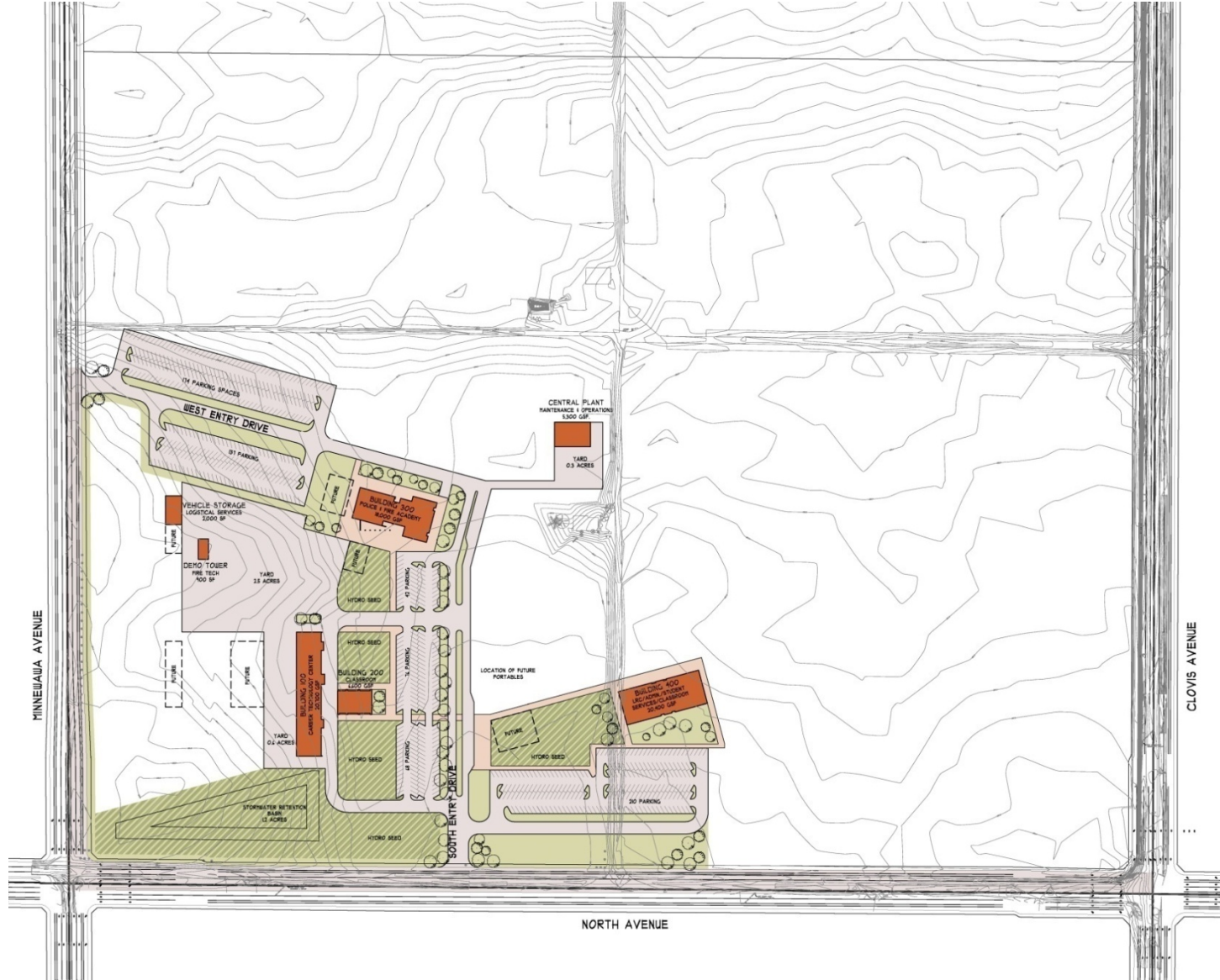
# Long Range Master Plan





# South East Center

# Phase I Master Plan



# District Office

## Facilities Master Plan



## Relocate District Wide Facilities

- Relocate District Office
- Relocate District Operations
- Increase available land at FCC

# CLOVIS CENTER DISTRICT OFFICE

# Long Range Master Plan





# Career Technology Center

## Replace Facility

- Relocate programs to the new Southeast Center