



# STATE CENTER COMMUNITY COLLEGE DISTRICT FACILITIES MASTER PLAN

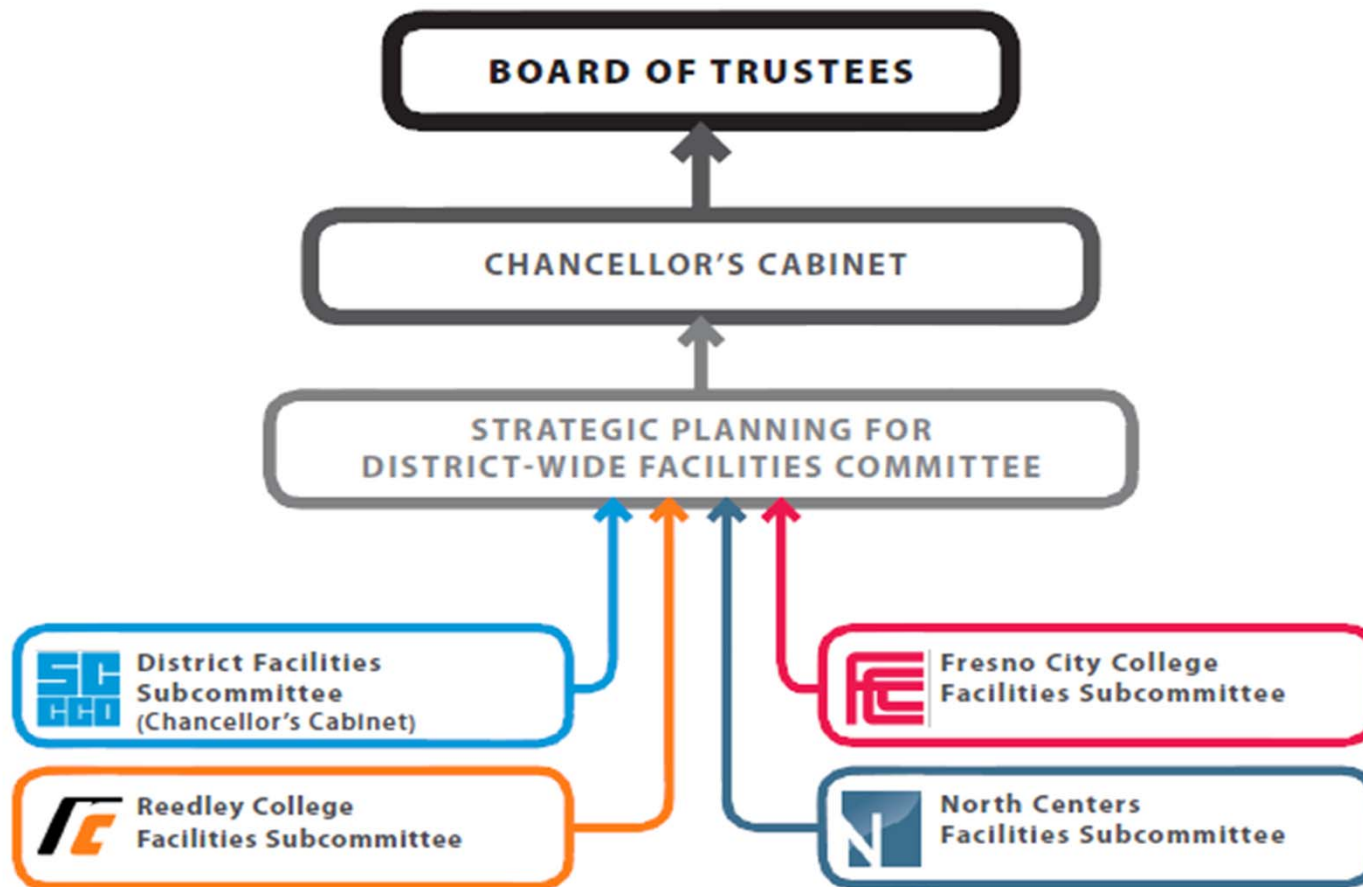


Draft  
Board Update March 2012

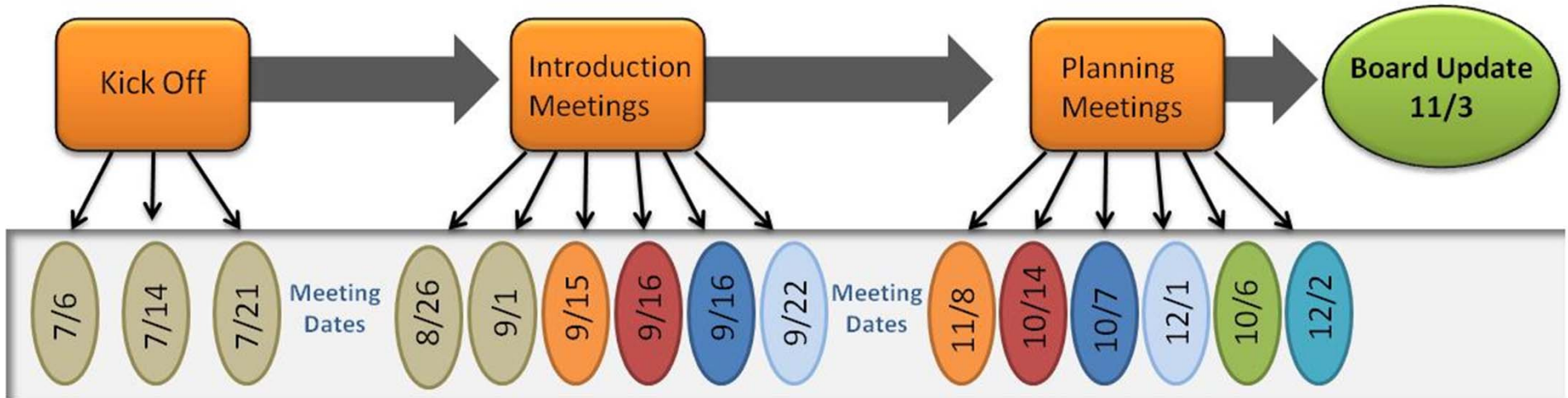


# Facilities Master Planning Committees Structure

Facilities Master Planning Organizational Chart  
State Center Community College District



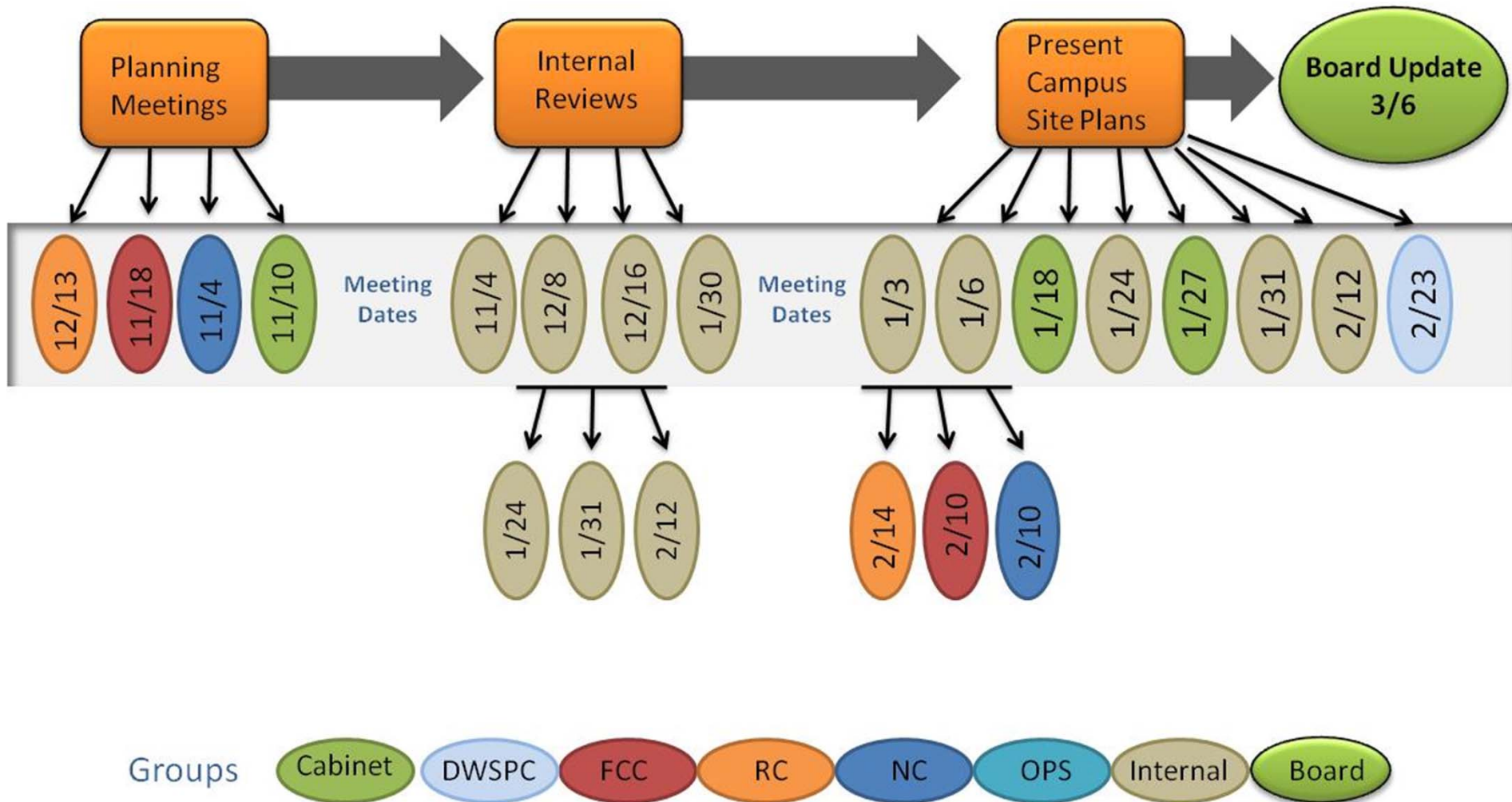
# Meetings to Date July – November 2011



Groups



# Meetings to Date November 2011 – March 2012



# Connection to the Educational Master Plan



## Completion of the Educational Master Plans

- Fresno City College
- Reedley College
- North Centers

## Review of Educational Master Plans with the Authors

## Analysis of the Educational Master Plans

## Initial Focus

How can the Facilities Master Plan assist the District in achieving it's Strategic Plan Goals and Objectives

## Top Issues

- Campus Safety
- Transportation
- Strengths and Weaknesses of the College
- Most Common Perceptions,
- What would provide Positive Immediate Impacts
- Future Program of Instruction.

## Space and Growth Analysis



# Connection to the Constituents



The Master Planning Team worked closely with Facilities Master Planning Sub Committees.

Key Faculty - Staff - Students - Administrators

Input from Facility Sub-Committees

- Analysis of existing conditions
- Analysis the Educational Planning Data
- Evaluation of options
- Preparation of Draft Master Plans



Draft Master Presented to Chancellor’s Cabinet  
Additional Input

Draft Master Presented to Administration  
Additional Input

Draft Master Presented to Sub-Committees  
Recommended Project Priorities

Draft Master Presented to the Board of Trustees



# Facilities Master Goals



## Facilities Master Plan Goals

The facilities planning priorities were developed to include the following list of goals that focus on District-Wide Site and Facilities issues:

- Address the needs of the Educational Master Plan
- Growth projections
- Prioritize projects
- Replace portable buildings with permanent facilities
- Develop sites and facilities to attract students
- Encourage students and community members to spend time on campus
- Incorporate sustainable design principles in all development
- Consider life cycle costs and reduce maintenance needs
- Address ADA issues and increase accessibility

# Facilities Master Purpose and Process



## Facilities Master Plan Purpose

Respond to the District's 2009-2010 Educational Master Plans.

A guide for future Development Facilities Master Plan provides a 'blueprint'

- Placement of future facilities
- Removal of existing facilities
- Renovation of existing facilities
- Site improvements
- Develop District Wide Standards

## Facilities Master Plan Process

Highly participatory

Facilities Master Planning Committee meetings

- Key Faculty
- Staff
- Students
- Administrators

Review by all levels of the District Administration



# Enrollment and Growth State Funding Eligibility



Space Category / Description	State Supportable	Potentially State Supportable	District Funded
CLASSROOM	X		
LABORATORY	X		
NON CLASS LABORATORY	X		
OFFICE/CONFERENCE	X		
LIBRARY	X		
PHYS ED (INDOOR)		X	
AV/TV	X		
CLINIC/DEMONSTRATION		X	
ASSEMBLY/EXHIBITION		X	
FOOD SERVICE			X
LOUNGE/LOUNGE SERVICE			X
MERCHANDISING			X
MEETING/RECREATION			X
DATA PROCESSING/COMP		X	
PHYSICAL PLANT		X	
HEALTH SERVICES		X	

## State Supportable

Space Categories is defined in Title 5

## Potentially State Supportable

Dependent on campus program requirements

## District Funded

Space categories that do not qualify for State Funding

# 2025 Enrollment and Growth Space Analysis

## District Office District Operations



Space Category Description	Current Space Inventory	Assignable Area	Space Available at Site
District Office	11,513	-	
District Operations	2,153	-	
Capital Outlay	600	-	
Computer Training	886	-	
Police	1,790	-	
	16,942	-	
Clovis Center 2-Story			20,696
Clovis Center 1 -Story			12,447
			33,143
Existing Portable			1,485
Existing Portable			1,485
			2,970

# 2025 Enrollment and Growth Space Analysis Fresno City College - Southeast Campus



Space Category Description	Main Campus Inventory	Southeast Campus Proposed Area	Current Space Inventory	2025 Title 5 Qualification	Net Need
CLASSROOM	63,814	4,504	68,318	100,523	32,205
LABORATORY	173,865	32,704	206,569	210,334	3,765
NON CLASS LABORATORY	395	-	395	3135	2740
OFFICE/CONFERENCE	76,898	8,395	85,293	89,024	3,731
LIBRARY - LRC	34,073	1,186	35,259	84,952	49,693
AV/TV	15,141	863	16,004	18,500	2,496
	364,186	47,652	411,838	506,468	94,630

# 2025 Enrollment and Growth Space Analysis

## Reedley College



Space Category Description	Current Inventory Reedley	Current Inventory Oakhurst	2025 Title 5 Qualification	Net Need	5 Year Planning Space	Net Need
CLASSROOM	27,535	4,453	34,170	6,635	(3,031)	9,666
LABORATORY	93,068	1,832	88,267	(4,801)	3,836	(8,637)
NON CLASS LABORATORY	71	-	859	788	-	788
OFFICE/CONFERENCE	28,109	443	27,400	(709)	1,831	(2,540)
LIBRARY	18,756	-	28,601	9,845	-	9,845
AV/TV	3,409	886	12,511	9,102	1,008	8,094
	170,948	7,614	191,808	20,860	3,644	17,216

# 2025 Enrollment and Growth Space Analysis Madera Center



Space Category Description	Current Inventory	2025 Title 5 Qualification	5 Year Planning Space	Net Need
CLASSROOM	11,505	14,763	3,600	(342)
LABORATORY	24,885	18,402	-	(6,483)
NON CLASS LABORATORY	391	466	-	-
OFFICE/CONFERENCE	8,406	10,860	3,000	(546)
LIBRARY	5,548	15,204	5,000	4,656
AV/TV	1,369	12,500	2,100	9,031
	52,104	72,195	13,700	6,316

# 2025 Enrollment and Growth Space Analysis

## WILLOW INTERNATIONAL – Clovis Community College



Space Category Description	Current Inventory	2025 Title 5 Qualification	Net Need	5 Year Planning Space	Net Need
CLASSROOM	18,215	42,791	24,576	12,400	12,176
LABORATORY	39,564	45,401	5,837	11,000	(5,163)
NON CLASS LABORATORY	-	1,158	1,158	1,100	58
OFFICE/CONFERENCE	14,900	29,797	14,897	8,400	6,497
LIBRARY	11,631	36,011	24,380	2,440	21,940
AV/TV	4,109	13,298	9,189	-	9,189
	88,419	168,456	80,037	35,340	44,697

# District Wide Master Plan Facility Guidelines and Standards



Sustainability Guidelines



Energy Efficiency Guidelines



Modernization Standards



Accessibility Guidelines



Technology Standards



Total Cost of Ownership



# Fresno City College

## Facilities Master Plan





## Parking

- Parking Expansion
- Relocation of Softball and Tennis
- Relocation of Applied Tech

## Circulation

- Segregate Cars from Pedestrians
- Create Drop-offs
- Stronger Connections to Campus Core
- Reinforce Existing Campus Axis

## Image

- Selective Removal of Buildings
- Bring Campus to the Street
- New Face along Campus Edge
- Reinforce Collegiate Atmosphere

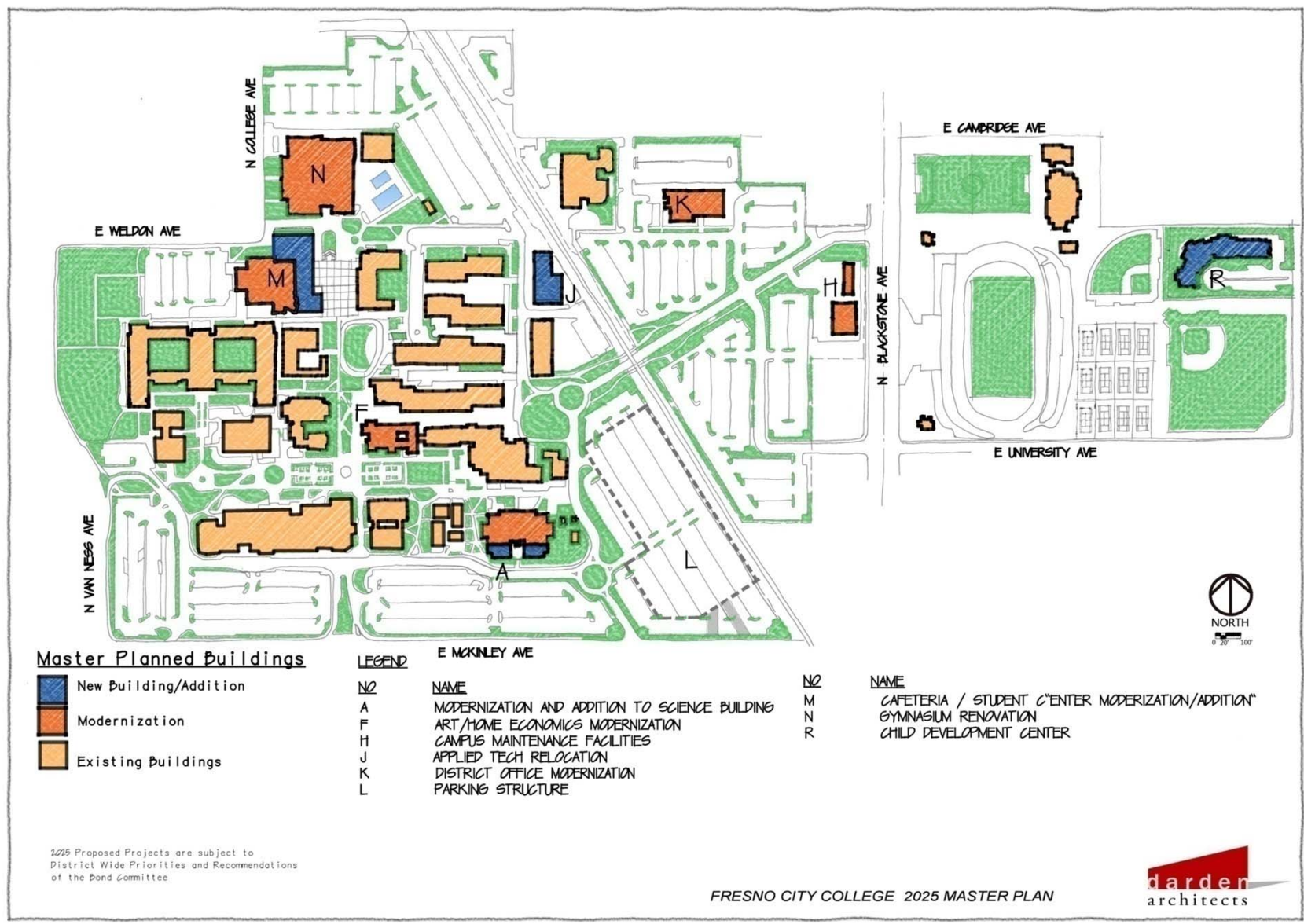
## Facility Needs

- Math/Science Addition/Modernization
- Art/Home Economics Modernization
- Gym Modernization
- Cafeteria/Student Union Addition and Modernization
- Modernization of Current District Operations



# FRESNO CITY COLLEGE

# 2025 Master Plan



**Master Planned Buildings**

- New Building/Addition
- Modernization
- Existing Buildings

**LEGEND**

NO	NAME
A	MODERNIZATION AND ADDITION TO SCIENCE BUILDING
F	ART/HOME ECONOMICS MODERNIZATION
H	CAMPUS MAINTENANCE FACILITIES
J	APPLIED TECH RELOCATION
K	DISTRICT OFFICE MODERNIZATION
L	PARKING STRUCTURE

- NO
- M
- N
- R

**NAME**

- CAFETERIA / STUDENT CENTER MODERNIZATION/ADDITION\*
- GYMNASIUM RENOVATION
- CHILD DEVELOPMENT CENTER

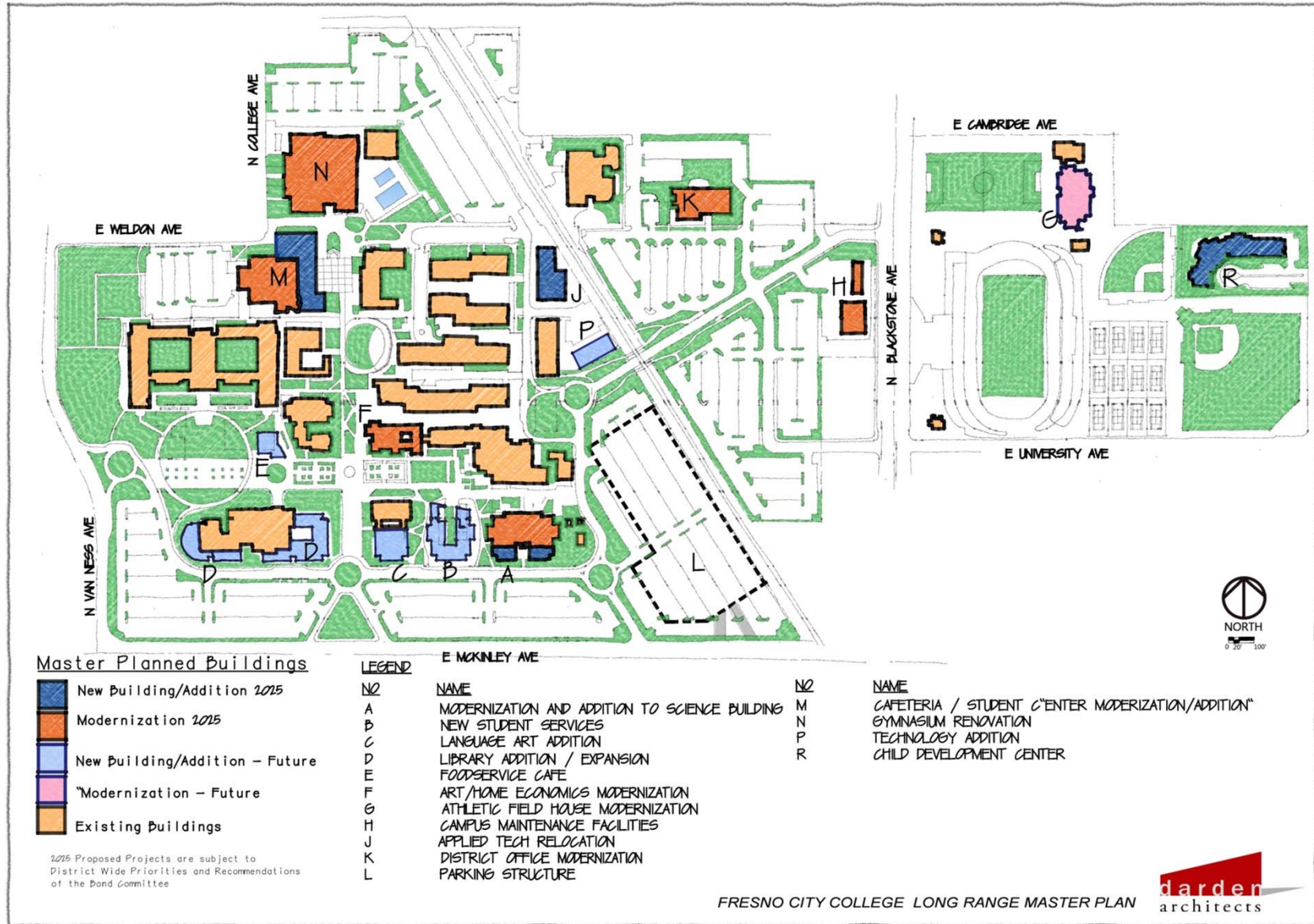
2025 Proposed Projects are subject to District Wide Priorities and Recommendations of the Bond Committee



# FRESNO CITY COLLEGE

# Long Range Master Plan

**darden**  
architects  
Established 1959



### Master Planned Buildings

- New Building/Addition 2015
- Modernization 2015
- New Building/Addition - Future
- Modernization - Future
- Existing Buildings

2015 Proposed Projects are subject to District Wide Priorities and Recommendations of the Bond Committee

### LEGEND

NO	NAME	NO	NAME
A	MODERNIZATION AND ADDITION TO SCIENCE BUILDING	M	CAFETERIA / STUDENT CENTER MODERNIZATION/ADDITION
B	NEW STUDENT SERVICES	N	GYMNASIUM RENOVATION
C	LANGUAGE ART ADDITION	P	TECHNOLOGY ADDITION
D	LIBRARY ADDITION / EXPANSION	R	CHILD DEVELOPMENT CENTER
E	FOODSERVICE CAFE		
F	ART/HOME ECONOMICS MODERNIZATION		
G	ATHLETIC FIELD HOUSE MODERNIZATION		
H	CAMPUS MAINTENANCE FACILITIES		
J	APPLIED TECH RELOCATION		
K	DISTRICT OFFICE MODERNIZATION		
L	PARKING STRUCTURE		

FRESNO CITY COLLEGE LONG RANGE MASTER PLAN





# Reedley College

## Facilities Master Plan



## Parking

- Increase Parking
- Improved Access

## Circulation

- Connect Parking Lots
- Reinforce Existing Campus Axis

## Image

- Create Collegiate Atmosphere
- Create New Campus Face

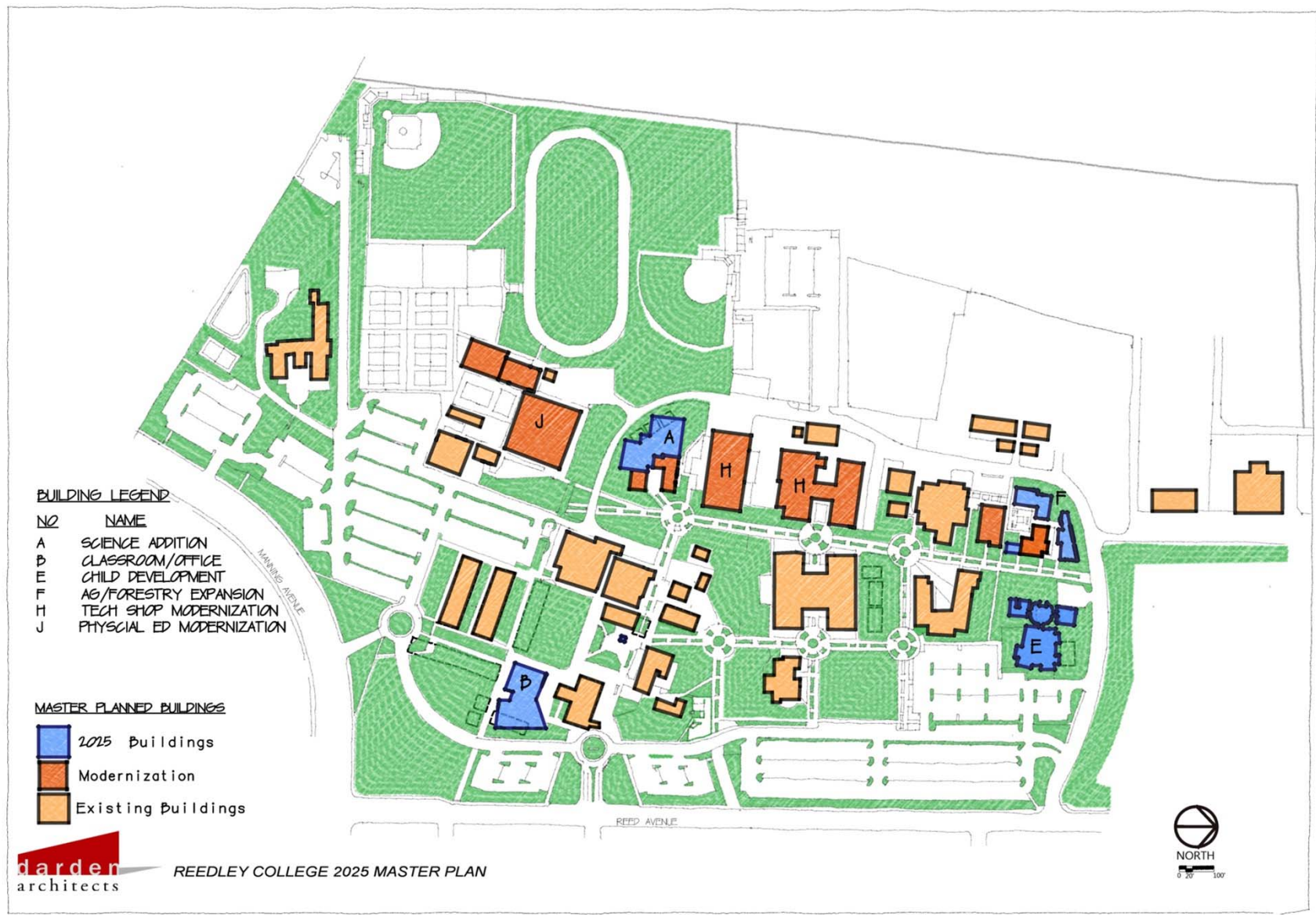
## Facility Needs

- Science Expansion
- Ag / Tech Expansion Modernization
- Improve Classroom Functionality
- Classroom / Offices



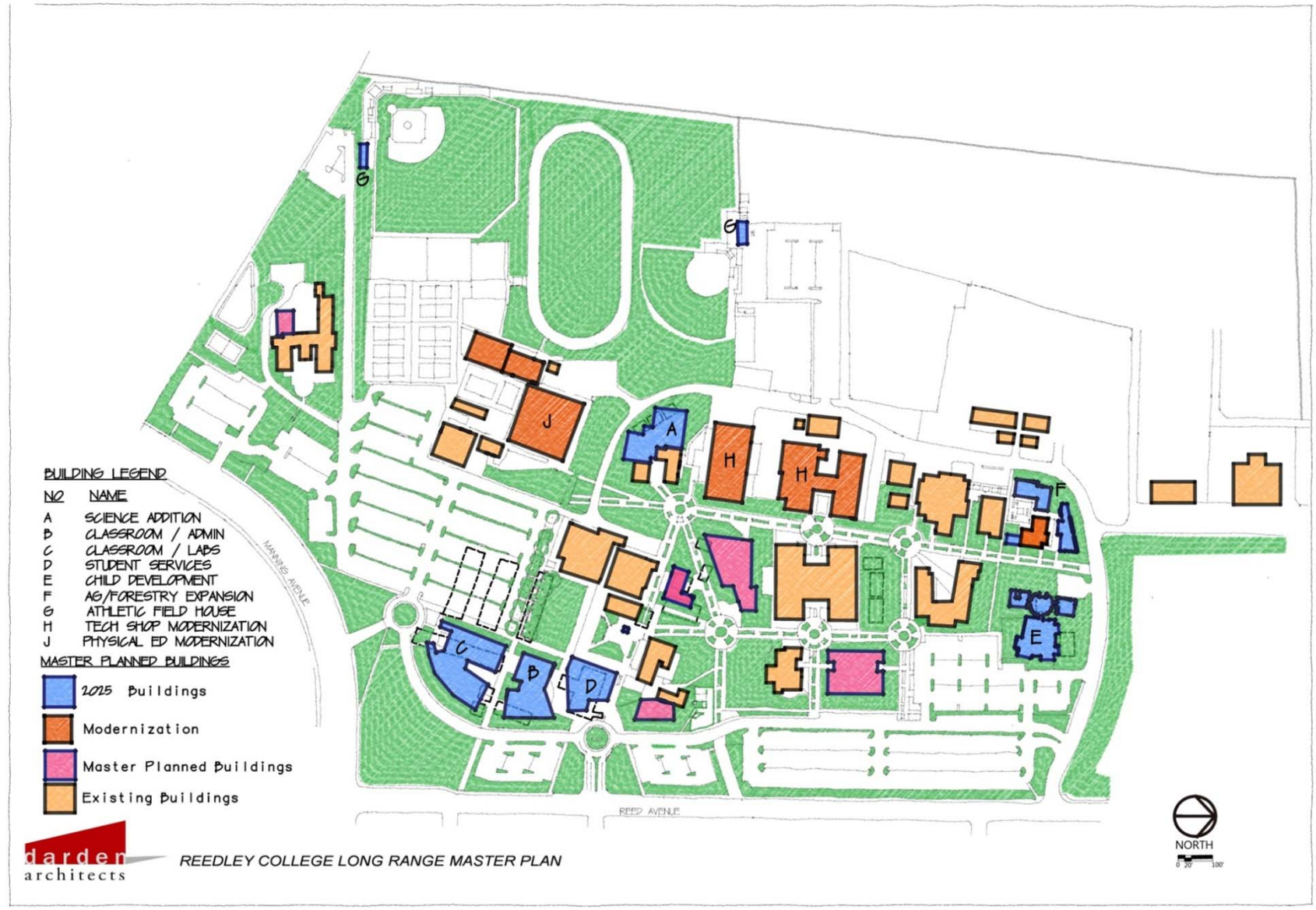
# REEDLEY COLLEGE

# 2025 Master Plan



# REEDLEY COLLEGE

# Long Range Master Plan



# Madera Center

## Facilities Master Plan





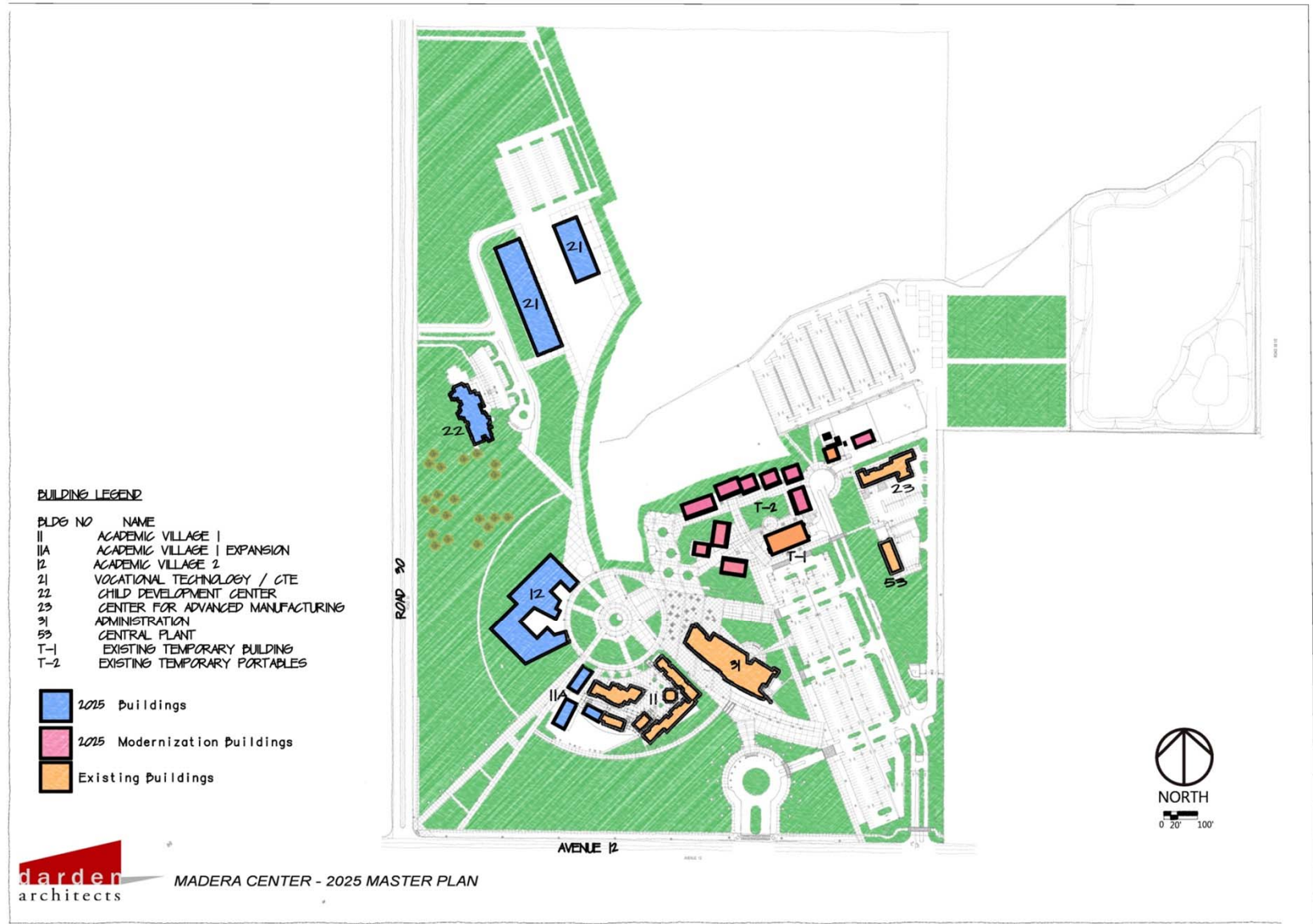
## Growth - Expansion

- Academic Village One Expansion  
LVN Labs and Offices for Nurses
- Child Development Center
- Modernize Portables
- Vocational Buildings
- Athletic Fields
- Academic Village Two



# MADERA CENTER

# 2025 Master Plan



# MADERA CENTER

# Long Range Master Plan



### BUILDING LEGEND

BLDG NO	NAME
II	ACADEMIC VILLAGE 1
IIA	ACADEMIC VILLAGE 1 - EXPANSION
12	ACADEMIC VILLAGE 2
21	VOCATIONAL TECHNOLOGY
22	CHILD DEVELOPMENT CENTER
31	ADMINISTRATION
41	LEARNING RESOURCE CENTER
42	CAFETERIA / BOOKSTORE
43	SNACK BAR
61	GYMNASIUM
62	SHOWER/LOCKER
63	PERFORMING ARTS COMPLEX
64	AQUATIC CENTER
51	PLANT SHOPS / PLANT OPERATIONS
53	CENTRAL PLANT
54	SHIPPING / RECEIVING / WAREHOUSE

- MASTER PLAN BUILD-OUT
- 2025 Buildings
- Existing Buildings



MADERA CENTER - MASTER PLAN BUILD OUT



# Oakhurst Campus

## Facilities Master Plan



# OAKHURST CAMPUS

# Themes and Priorities Projects



## Permanent Facilities

- Remove Portable Buildings
- Construct Permanent Building
- Community Space, Conference, Retreat



# OAKHURST CAMPUS

# Existing Campus

**darden**  
architects  
Established 1959



**darden**  
architects

OAKHURST EXISTING SITE



# OAKHURST CAMPUS

# Long Range Master Plan

darden  
architects  
Established 1959



## OakhurstCenter

State Center Community  
College District

Site Plan | Perspectives

# Willow International Center Clovis Community College

Facilities Master Plan





## Growth - Expansion

- Vocational – CTE
- Athletics:
  - Soccer Fields
  - Develop Field House (Shower/Locker)
- Performing Arts Building
- Gymnasium
  - Tennis courts
  - Pools - 50 Meter - Diving/Water Polo
- Library - Learning Resource Center
- Administration / Student Services

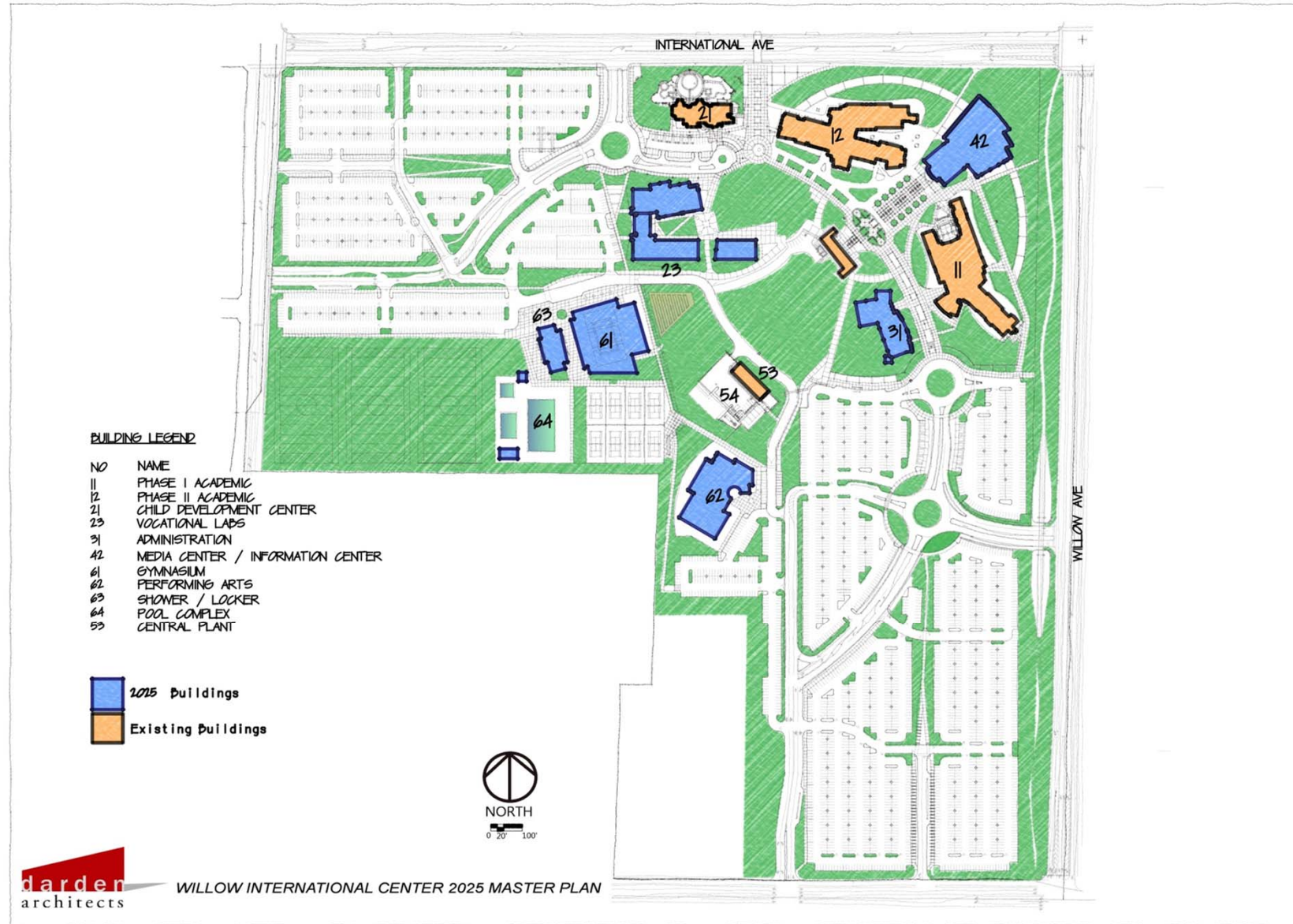


# WILLOW INTERNATIONAL CENTER

## Clovis Community College

# 2025 Master Plan

**darden**  
architects  
Established 1959

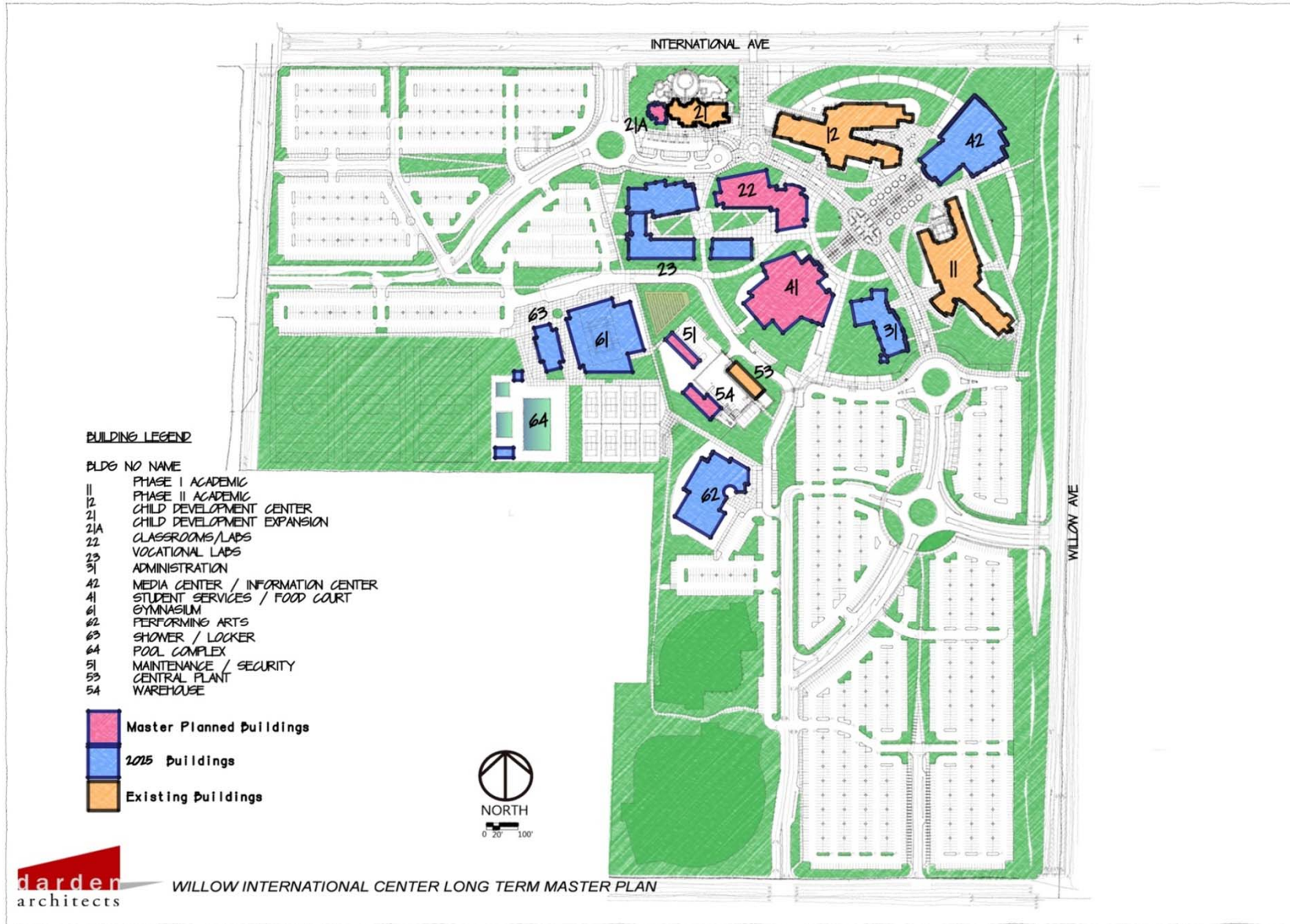


# WILLOW INTERNATIONAL CENTER

## Clovis Community College

# Long Range Master Plan

**darden**  
architects  
Established 1959





# South East Center

## Facilities Master Plan



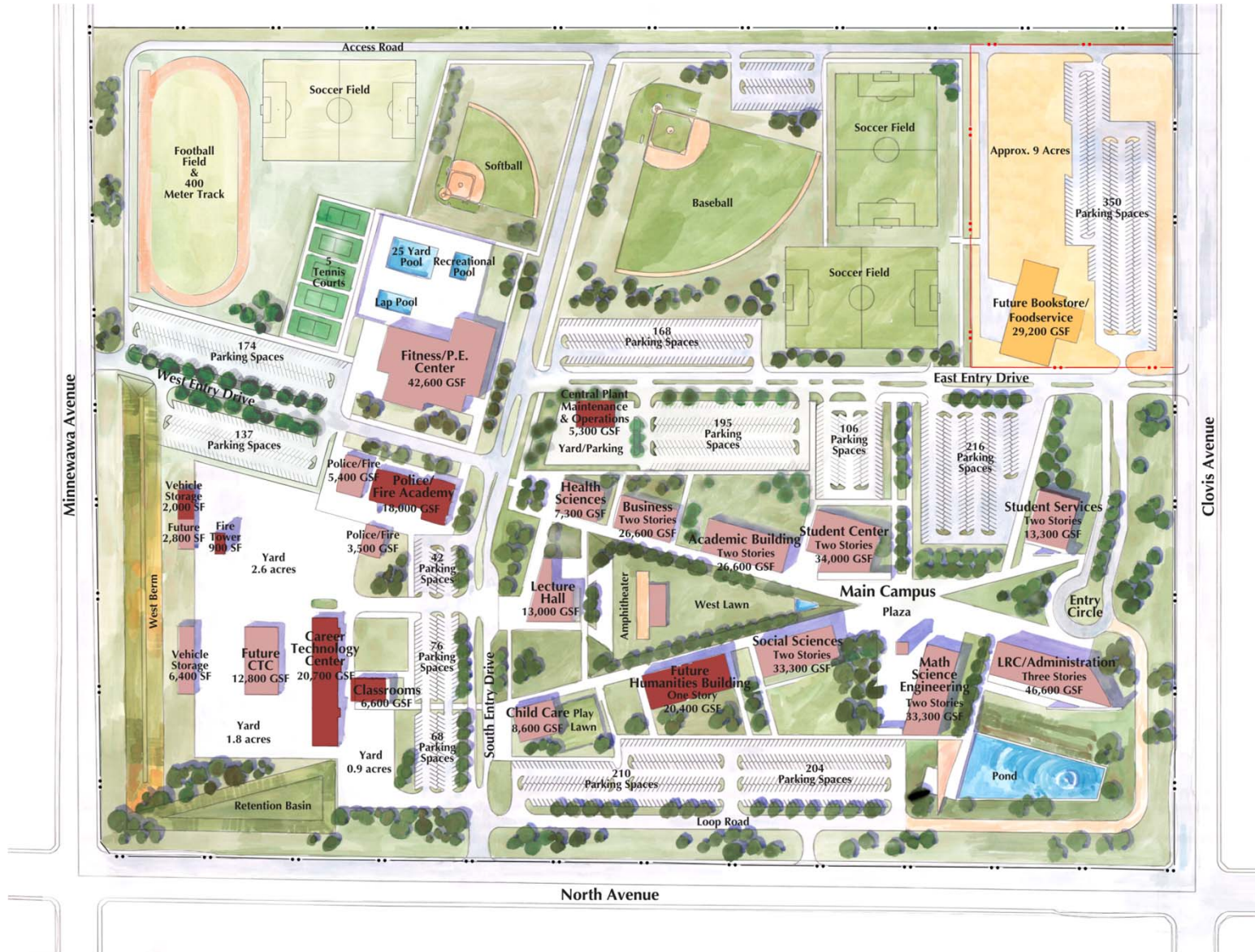


darden  
architects  
Established 1959



# South East Center

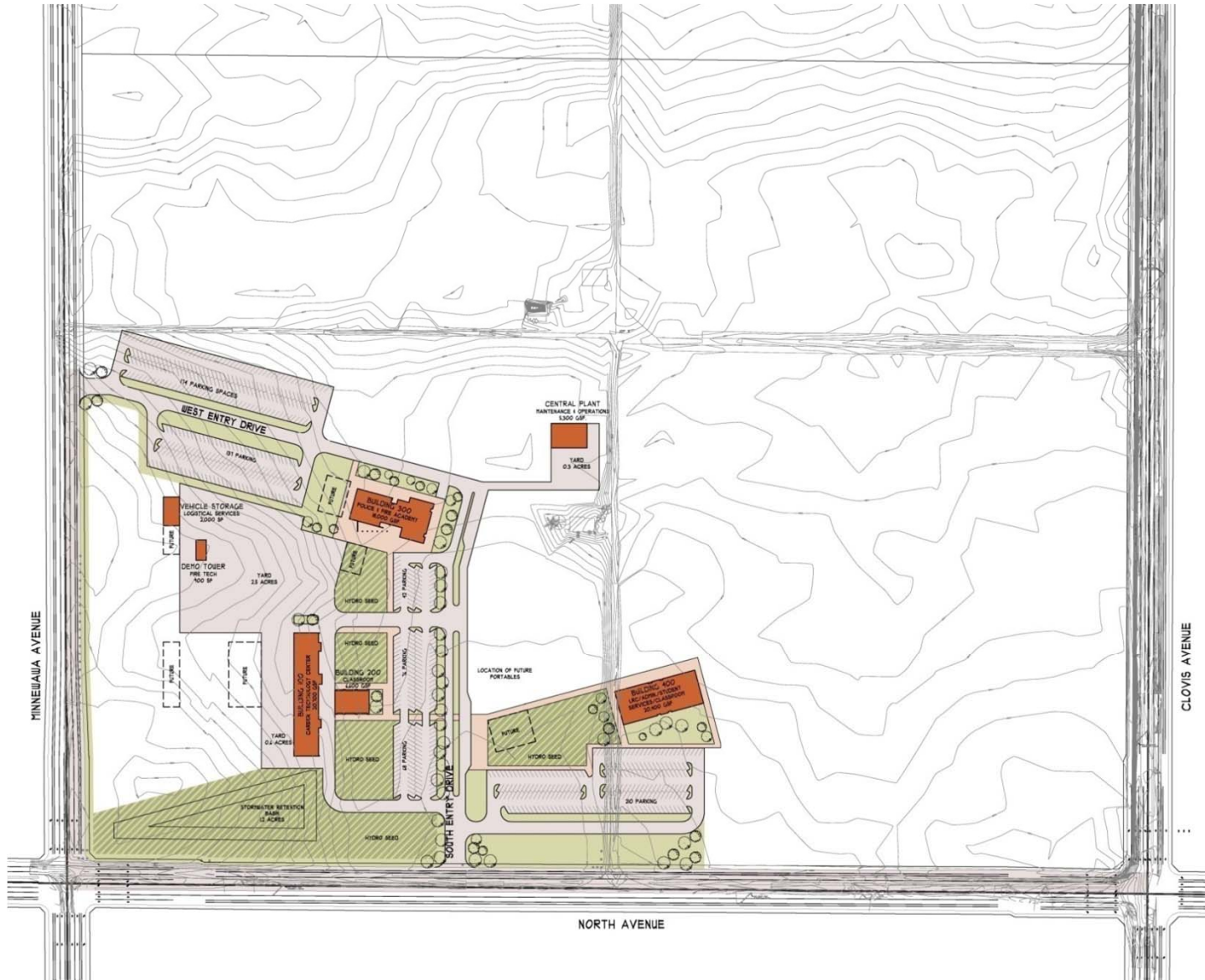
# Long Range Master Plan



# South East Center

# Phase I Master Plan

darden  
architects  
Established 1959





# District Office

## Facilities Master Plan



## Relocate District Wide Facilities

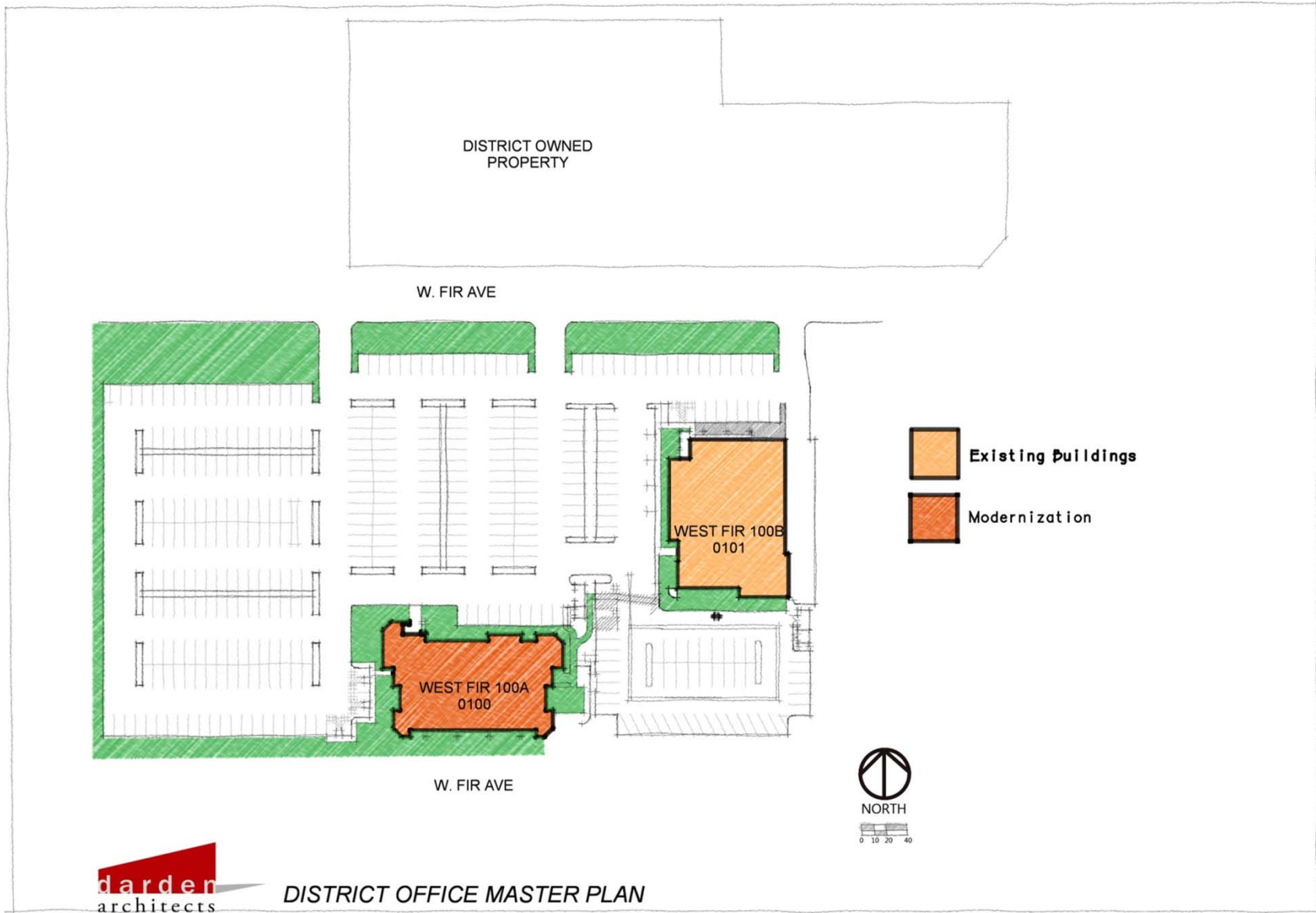
- Relocate District Office
- Relocate District Operations
- Increase available land at FCC



# CLOVIS CENTER DISTRICT OFFICE

# Long Range Master Plan

**darden**  
architects  
Established 1959



# Career Technology Center

## Replace Facility

- Relocate programs to the new Southeast Center



# Future Meetings

