

# SPANISH 2~ HIGH-BEG SPANISH

Welcome to class! *¡Bienvenidos a la clase de español!*

Spring 2024 / Section: 59026 & 59027 / 5 Units/ Instructor: Jorge Vargas

**“Habla una nueva lengua para que el mundo sea un nuevo mundo.”** Rumi

## COURSE OVERVIEW

This is a second-semester course in conversational and written Spanish for non-native speakers. Students will develop grammatical structures, expand their vocabulary, and further study the cultures of Spain, Latin America, and Hispanic cultures of the U.S. This course introduces the literary text. (A, CSU-GE, UC, I) (C-ID SPAN 110)

## What You Will Learn

Throughout the course, you will develop language skills in Spanish, will gain a sensitivity to differences and similarities in cultural issues, and by the end of the semester, you will be able to:

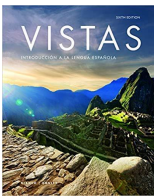
1. work on developing oral competence in the Spanish language through the use of a conversation partner and communicative activities.
2. develop knowledge of advanced grammatical structures such as "pretérito" and "imperfecto".
3. develop a greater knowledge of the customs and various cultures that exist in the Spanish-speaking world.
4. become a competent writer using the Spanish language and various creative writing activities.

## Computer Readiness

- This Spanish course requires you to watch videos, record videos, make voice recordings, and many other things that require an updated computer. The last thing I want is for you to be frustrated by technology, so before beginning this course, please go to [Computer Requirements](#) to see whether your computer meets the requirements for using VISTAS, our online e-text.

## Required Materials

- Computer (desktop or laptop). iPads or smartphones support the audio/video exercises as well, but are difficult to use for some exercises.
- Webcam, microphone, and speakers or earphones/pods.



- **E-MATERIALS:** *VISTAS: Introducción a la lengua española* (6th Edition. Blanco & Donley, Vista Higher Learning, Boston, MA, 2020) Volume 1 + Supersite Code w/ WebSAM (online e-Text & workbooks).
- Purchase the materials at the [college bookstore](#) (some of you have to: EOPS, etc.) OR for a discounted price, go to the publishing [company's website](#).
- You will be prompted to create an account; be sure to remember your username and password as you will need these to access all of the course materials.
- Here are the pricing options: **CHOOSE THE DIGITAL FORMAT**

1. 6-month code: \$115 per semester (1 Spanish class only (Spanish 1)).
  2. 12-month code: \$75 per semester (2 Spanish classes (Spanish 1 & Spanish 2) in 1 year: \$150 upfront)
- You will also need to check Google Classroom for class announcements, links, and resources.
  - **Do not buy a used code from an outside source;** these codes can only be used once by one student. Do not waste your money.
  - Once you have the materials, follow the [instructions on Canvas for enrolling in the course.](#)

## Grading and Evaluation

**This course is not self-paced.** All assignments, discussions, oral activities, quizzes, etc. are to be completed no later than 11:59 pm PST/PDT on the date indicated.

## Amount of Work

This is a 5-unit course and the workload reflects that. For every unit, about three hours of work are required. You will be reviewing grammar tutorials and completing various activities online to reinforce what you are learning. You will also spend time completing compositions, discussions, lesson quizzes, and preparing for oral presentations, the final exam; this will require on average about **15 hours a week**. Depending on your computer skills and understanding of the materials, the amount of time spent on the class may vary, as you become acquainted with online procedures.

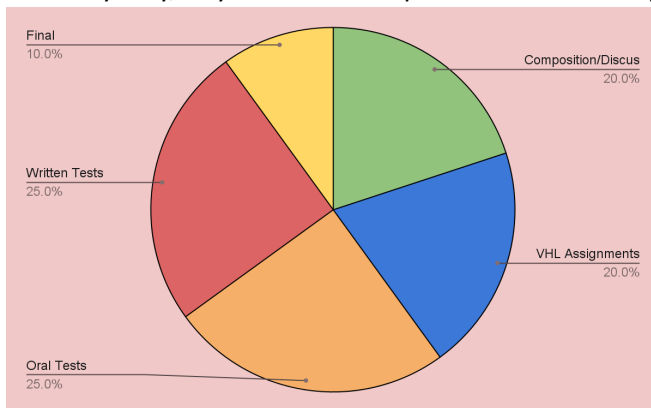


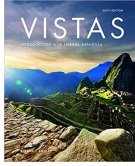
Figure 1 Amount of Work

Assignment	Percentage of Total Grade
Compositions / Discussions	20%
VHL Central Assignments	20%
Oral Tests	25%
Written Tests	25%
Final Exam	10%
<b>TOTAL</b>	<b>100%</b>

Table 1 Grading Scale

## Grading scale

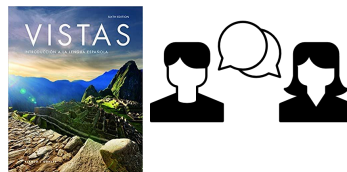
A = 90-100%	B = 80-89%	C = 70-79%	D = 60-69%	F = 59% and below
-------------	------------	------------	------------	-------------------



## VHL Central Assignments

Each lesson in VHL Central will have formative activities that will assess your listening, reading, and writing assignments. You will also watch cultural videos and read articles, and you will answer comprehension questions. More specifically, VHL Central includes the following sections: Presentation and Tutorials, Practice, Workbook, Video Manual, and Lab Manual Practice, which will take you step-by-step through each lesson. This process is fundamental to your success and includes a short introduction to the broad content; lively presentations of key topics and content; brief comprehension checks; abundant opportunities for practice and for using the content in context through chat and finally an opportunity to self-evaluate using the *Recapitulación* (practice exam), that specifies what you are expected to be able to accomplish after completing the chapter.

- Your weekly VHL Central Assignments **need to be submitted every day by 11:59 pm PST/PDT** and new ones will be assigned every Monday morning.



## VHL Central Oral Assignments

Every lesson in VHL Central requires **speaking/video assignments** to be completed individually or with a partner. These assignments will be scaffolded to help you communicate using the newly acquired language skills. They will be graded with a rubric that evaluates task completion, comprehensibility, pronunciation, intonation, as well as vocabulary and grammatical accuracy.

**IMPORTANT!** Try your own personal best in oral assignments. It is very easy to tell when someone is cheating on camera. It is easy to see eyes moving across a screen or looking down or side to side to check your notes, so please don't try it. There is zero tolerance for cheating. Prepare for the assignments and look directly into the camera. I do not want to have to give anyone a zero if I suspect that you are cheating. Check Modules for VHL Central Oral Assignments due dates.

**IMPORTANT!** The Oral Assignments, which require you to record your voice, will receive a grade of zero (0) if you record surrounding noise such as music or other people speaking in the background, rather than your voice with appropriate responses. Additionally, if your recording demonstrates that someone in the background helped you with an assignment or if you record vulgar language, disciplinary actions will be initiated for academic dishonesty and/or misconduct done on your part.

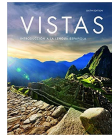
## Google Classroom Compositions / Class Discussions



Compositions / Class Discussions will be assigned in Google Classroom throughout the semester. Your grade will be based on the breadth and accuracy of grammar and vocabulary, and your correct use of punctuation and accents.

**IMPORTANT!** The use of machine translators for graded assignments is prohibited and constitutes academic dishonesty unless expressly allowed for a particular assignment by the instructor. Please

consult the grading rubric on each assignment. Check Modules for Compositions / Class Discussions due dates.



## VHL Central Tests

You will be taking a Test at the end of each unit. This is designed to match the objectives and student outcomes and may include listening comprehension, vocabulary, grammar, reading comprehension, culture, and/or writing. You will take each Test on VHL Central. These are timed tests, and you will have only one attempt to complete during assigned days (please see calendar). If you don't complete the Test by the deadline, you will receive a grade of zero (0) on the Test. **Students are not allowed to make up Tests.** Check the full semester schedule for VHL Central Tests' dates.



## VHL Central Final Exam

At the end of the semester, you will complete a final exam on VHL Central that will cover Module 6 to Module 10 and only part of Module 11. **Students are not allowed to make up the Final Exam.** Check the full semester schedule for the VHL Central Final Exam date.

## Office Hours and Communication Policy



My **office hours** are a time that is reserved for you. You can come in person or just contact me at these times.

- Tuesdays, Thursdays, and Fridays 3:30-4:30 PM

There are three ways to contact me:

- In person. Come to the classroom during office hours and we can talk.
- Email [jvargas@fowlerusd.org](mailto:jvargas@fowlerusd.org) I'll try to respond to your email within 24 hours.
- Canvas Inbox. Like email, I'll respond to you within 24 hours, usually less.

## Drop and Attendance Policy

In this class, attendance means that you regularly engage in course activities. Most of the work in this class will be completed on Google Classroom and VHL Central. **If you don't engage in the coursework for more than a week, you will be considered absent and will be dropped from class.** Please communicate with me if you have concerns about your attendance.

## Late Work Policy

You will know the due dates of assignments and exams for this class well in advance. All work, however, must be completed on time. Extra work or makeup work will not affect your grade. For VHL Central

Assignments *only*, you have a one-day grace period. You may submit those assignments one day late, but will receive a 10% deduction on those grades. After that date, grades will be entered on Canvas. No exceptions. Please do not ask. No late Tests or Final Exam accepted. If you have an emergency, contact me *before* the due date. Examples of emergencies constitute a car accident or a heart attack. A planned vacation or a birthday party does not fall into an emergency category.

## In need of a tutor?

You may always talk to me during office hours. I am here to help you learn, but you can also work with a tutor from the Learning Center. [Watch this video](#) for information about online tutoring. This is the [Tutor Matching Service](#) that connects you with online tutors. Check it out! We are here to help you.



## Disabilities

If you have special needs as addressed by the Americans with Disabilities Act (ADA) and/or need course materials in alternate formats, notify me immediately. We have [Disabled Student Programs and Services](#) on campus. Reasonable efforts will be made to accommodate your special needs.

## Etiquette

Etiquette is extremely important. We must show respect to one another at all times. Rudeness and disrespect will not be tolerated in this course. Whenever possible, give constructive criticism and treat others how you would like to be treated.

## General Notes on Assignments and Academic Honesty

- Usage of English: For assignments, you should only use English when it is EXPLICITLY requested. If a language is not specified, use Spanish.
- Accented Characters: Make sure to use accent marks when needed. They are within the VHL Central exercises and they constitute an important part of the language.
- Original Work: The assignments represent opportunities for you as a student of Spanish to demonstrate your acquired knowledge of the material we have covered. Your work should be wholly original, and only your instructor should provide feedback and corrections on it. While you may use online dictionaries to look up words and expressions, you **may NOT use online translators** to translate whole sentences. Assignments that contain structures that have not been covered in the course or phrases that have been copied from elsewhere will only receive partial credit. In some cases, if appropriate, you will be asked to redo the assignment. Academic dishonesty also includes cheating or using unauthorized devices during quizzes, exams, or the preparation of writing projects. Egregious cases will be forwarded for disciplinary action. Penalties for academic dishonesty range from an "F" on an assignment to dismissal from the course and/ or the college.

## Equity Is Important

Outside of instructional requirements, there are two key goals for me with this class. My first goal is to celebrate the diverse nature of our college and community. I will do my best to present materials and activities that are respectful and celebratory of this diversity including but not limited to: gender identity, sexual orientation, ability, age, socioeconomic status, residence status, ethnicity, race, nationality, religion, linguistic background, and culture.

My second goal is that all students feel welcome, have their needs met, and feel respected both in and outside of this class. I will work to create a classroom atmosphere of trust and safety to meet this goal. But I will need your help in this work. It is critical that each of us show respect for all worldviews expressed in class whether it be by a classmate or via class materials, even and especially when we may not agree or may not feel comfortable with those views. Please let me know if something is said or done in or out of the classroom, by myself or other students, that is troubling or causes discomfort or offense. We should never ignore these situations and in some cases, we can use these situations as a learning experience. If you're not comfortable talking with me directly, please feel free to email or message me through Canvas or contact your counselor or another trusted faculty member to help with the conversation.

Please remember that this does not mean this is a safe place for hate speech, racism, prejudice, stereotyping, sexism, ableism, ageism, or other comments/actions that intentionally hurt people. These comments will not be tolerated and may be reported.

We have some great resources on campus to help make Reedley College as welcoming as possible, please take advantage:

- Contact Todd Davis, Title IX Coordinator, if you feel you have been discriminated against based on sex, experienced sexual harassment, or sexual violence. (Find the website for [Title IX link here!](#))
  - [Todd.davis@reedleycollege.edu](mailto:Todd.davis@reedleycollege.edu) or 559-494-0359
- Contact Darlene Murray, Student Equity Coordinator:
  - [Darlene.murray@reedleycollege.edu](mailto:Darlene.murray@reedleycollege.edu)
- Complete the Student Complaint form: used by students to report an unauthorized or unjustified act by an employee. This form can be cumbersome, feel free to reach out to me or a counselor for help.
  - [Student Complaint Form](#)
- Visit [Reedley College's Racial Equity and Anti-Racism website](#) to view Reedley College's Anti-Racism Statement and resolutions passed by Reedley College's Academic and Classified Senates, and access equity resources.

## Important dates

### IMPORTANT DATES FOR SPRING 2024

DATE	DAY	EVENT / DEADLINE
January 2	(T)	Campus re-opens after Winter Break
January 5	(F)	Last day to add a full-term or short-term Spring 2024 class in person 5:00 p.m.
January 7	(Su)	Last day to add a full-term or short-term Spring 2024 class through Self-Service 11:59 p.m.
January 8	(M)	Start of Spring 2024 semester
January 8 - March 8	(M-F)	Short-term Spring 2024 classes, first nine weeks
January 15	(M)	Martin Luther King, Jr. Day observed (no classes held, campus closed)
January 19	(F)	Last day to drop a Spring 2024 full-term class for full refund
January 26	(F)	Last day to register for a Spring 2024 full-term class in person with add authorization
January 26	(F)	Last day to drop a Spring 2024 full-term class to avoid a "W" in person
January 28	(Su)	Last day to drop a Spring 2024 full-term class to avoid a "W" on Self-Service
January 28	(Su)	Last day to add a Spring 2024 full-term class with add authorization on Self-Service
February 16	(F)	Lincoln Day observance (no classes held, campus closed)
February 19	(M)	Washington Day observance (no classes held, campus closed)
March 1	(F)	Deadline to apply for graduation for Spring 2024 completion
March 8	(F)	Last Day to drop a Spring 2024 full-term class (letter grades assigned after this date)
March 11 - May 17	(M-F)	Short-term Spring 2024 classes, second nine weeks
March 25 - March 29	(M-F)	Spring recess (no classes held, campus open Mar 25-28)
March 29	(F)	Good Friday observance (no classes held, campus closed) (classes reconvene Apr 1)
May 13-17	(M-F)	Spring 2024 final exams week
May 17	(F)	Last day to change a Spring 2024 class to/from Pass/No-Pass grading basis
May 17	(F)	End of Spring 2024 semester/commencement
May 27	(M)	Memorial Day holiday (campus closed)

## SPANISH 2 COURSE OUTCOMES:

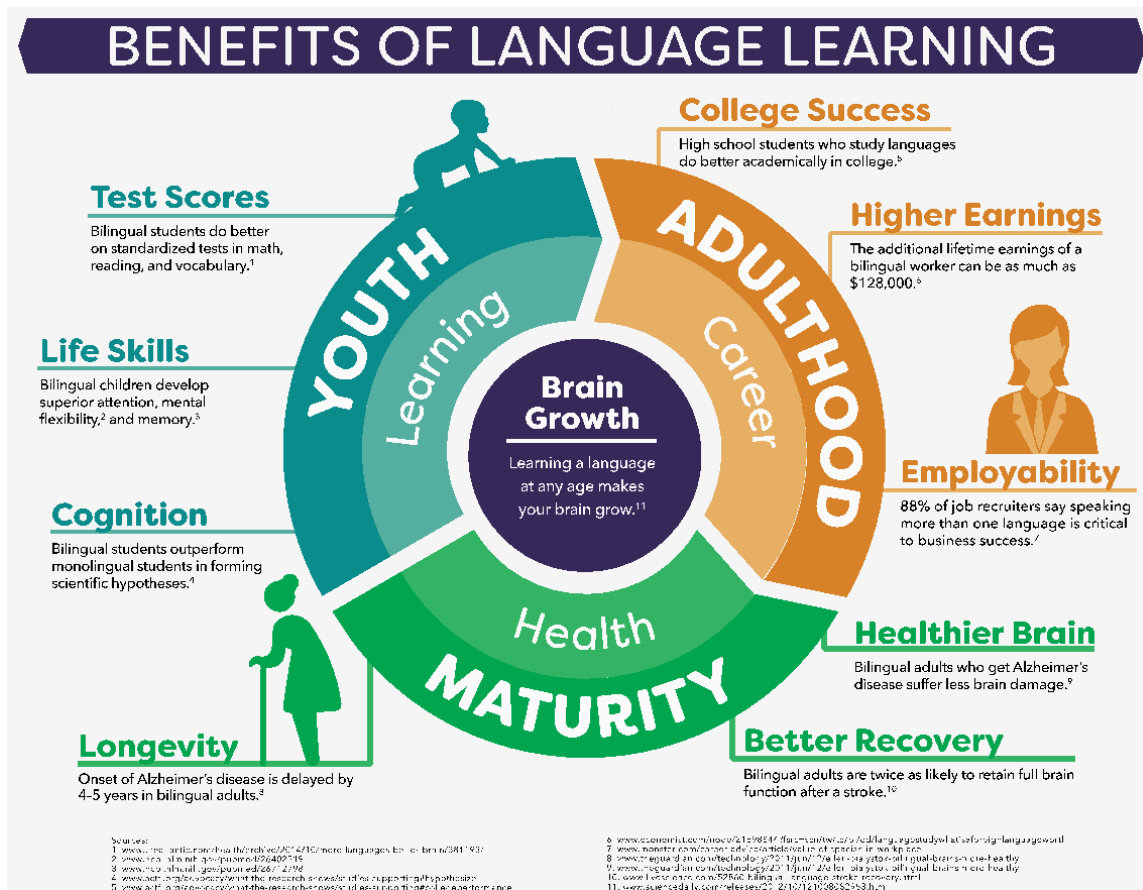
After the completion of this course, the student will be able to:

1. engage in conversation by applying "survival skill" Spanish outside of the classroom in a variety of contexts such as meeting people, shopping for food, ordering food in a restaurant, asking for and giving directions, traveling, and dealing with health issues.
2. choose, evaluate, and apply the correct usage of basic grammatical structures to express ideas, describe past events, make requests, and discuss future plans.
3. read and understand specific pieces of information from authentic, graphically-represented text such as ads, short magazine or newspaper articles, and short stories.
4. meet and get to know native speakers of Spanish through face-to-face contact, personal correspondence, the Internet, or travel.
5. have a greater understanding and appreciation of the diversity of Hispanic cultures and the products of these cultures.

## SPANISH 2 COURSE OBJECTIVES:

In the process of completing this course, the student will:

1. understand and interact in simple spoken Spanish within the range of vocabulary topics and structures covered in this course.
2. recognize and employ new vocabulary and grammatical structures in order to communicate ideas, both verbally and in writing, in the present and past tenses.
3. understand and convey information and feelings in a given situation for a particular purpose.
4. understand basic written texts using contextual clues, vocabulary recognition, grammar knowledge, cognates, and inferences.
5. review, recall, and use vocabulary and grammatical structures and concepts from Spanish 1.
6. compare and contrast the target language and culture with the language and cultures of the U.S. and other countries.
7. demonstrate a high beginner level of proficiency in the five skills as mandated by the competency guidelines of the American Council on the Teaching of Foreign Languages (ACTFL): comprehension, speaking, reading, writing, and an understanding of the people and cultures of Spanish-speaking countries.





**Welcome to class! You will enjoy learning Spanish and about the Hispanic cultures. ¡Bienvenidos!**  
**Reedley College                      Course Syllabus and Expectations                      SPRING 2024**

<u>Class</u>	<u>Sec</u>	<u>Hour</u>	<u>Days</u>	<u>Room</u>	<u>Instructor</u>
Span 1	<b>59026</b>	Pers:2&4	Daily	411	Jorge Vargas
	<b>59027</b>				

**CONTRACT**

I, \_\_\_\_\_, have read carefully and fully understand the syllabus and expectations for this course.

Double click to sign. Use scribble.

\_\_\_\_\_  
(Signature)

\_\_\_\_\_  
(date)

Keep in mind this is a five-unit course and it requires a considerable investment of time outside of class (three hours of study for every unit).