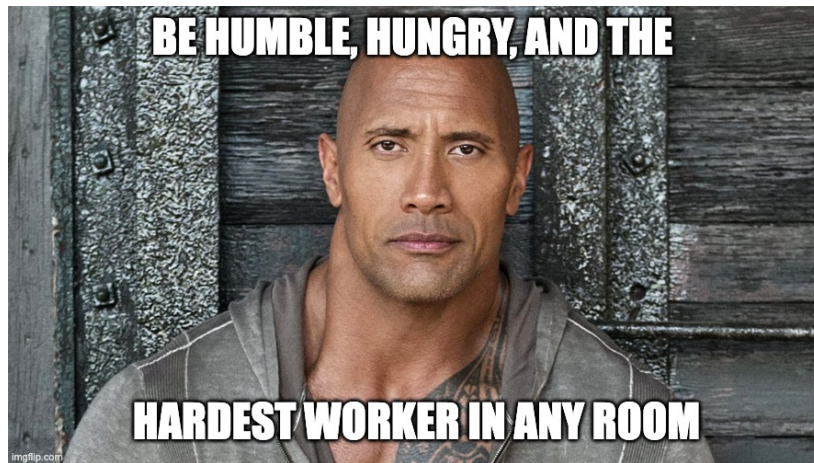


English 1A

Jamie Barker

MW 9:00 -- 10:50 CC1 207

Fall 2023



Dear scholar,

Welcome to my classroom, and into this English course in which you have the opportunity to develop your reading and writing skills and prepare you for the kinds of writing you will do in future academic courses.

My advice to you as you start out on this academic journey: see yourself as a scholar. Not merely as a student--but a scholar. A scholar's focus is on learning, including the entire learning process, which sometimes means getting it wrong. Allow yourself to fail. Learn from it and do it better next time. A scholar's end goal is to become a more educated, well-rounded, informed, and interesting person. It's not just about passing the course; it's about improving yourself as a human, and in turn making our world a better place.

See yourself as a scholar, and you will become one.

Please feel free to talk to me after class or contact me by email if you have any questions. I am here to help you in your scholarly progress, and am honored to be your professor.

Ms. Jamie Barker

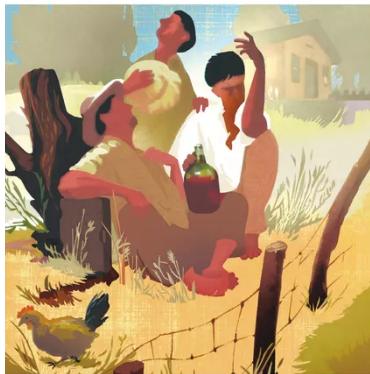
Here is our course description:

Students will read, analyze, and compose college-level prose, with emphasis on the expository; study writing as a process; explore different composing structures and strategies; edit and revise their own writing; and conduct research (gather, organize, evaluate, integrate, and document information), culminating in a term research paper and annotated bibliography. Students will write a minimum of 6,000 words in formal academic language.

Required Texts and Materials: You must have copies of our book--you will be required to bring it to class. Reading your book on your phone will not work for this class.

Course Book

You are required to have this textbook, which you can purchase at the Reedley College bookstore or an Amazon:



Tortilla Flat

by John Steinbeck

ISBN-10 0140187405

Paperback: 174 pages

A USB Flash Drive (also known as a jump drive or thumb drive) to save your work (this is super important because sometimes Canvas loses stuff)

If you have your own laptop I strongly suggest you bring it to class.

Writing Assignments:

Summary/responses: You will be given articles to read, annotate, summarize, and respond to in writing. Summaries must be typed and may not be submitted late.

Essays: The essays will be a combination of in-class and out-of-class writing. Unless otherwise specified, all drafts must be typed and be in the required format. Essays will be written in response to a question (the “prompt”) about the assigned reading. The reading will usually be done outside of class, and you will be expected to annotate the articles. (We will go over how to annotate.)

Poetry/Song Lyric Analysis: You will be taught to do this using the ARTWARS method.

SSCC Critique Method: You will be taught this method for critiquing essays

Class Policies and Procedures

Attendance

Students who do not attend the first class meeting will be dropped unless they have contacted me before the first class with an acceptable reason for why they must miss the first day.

Students who miss one or more classes in the first two weeks will be dropped unless they have contacted me prior to the class or immediately afterwards with an acceptable reason.

Students who miss four classes in the first nine weeks of the course will be dropped.

If you do not turn your first few assignments in, on the day they are due, I will drop you from the class since this indicates that you aren't ready to do the work that is required.

Regular attendance is essential. Students who are absent have difficulty understanding the assignments and often do not turn things in. Even though I don't give you a grade for attendance, you are hurting yourself if you are absent more than two times during the semester: students who do not attend all or most of the classes generally fail.

Students who add or choose to drop the class are responsible for completing the process through Web Advisor. Any student who does not add by the 2nd week will not be allowed to add the class after that.

Please don't be late. Plan ahead for parking, mishaps, and whatnot. Being late is disruptive, and a bad habit for you to develop. It happens--it might happen to me--but please avoid it because it could affect your grade.

Participation: I believe that students learn not only from the instructor but also from each other. So, be prepared to interact in pairs and groups with other students in the class. You can only be an active, prepared participant if you attend class regularly and on time, contribute in a meaningful way to discussions, and do the assigned work both in and out of class.

You must have the required materials, annotate all readings, and take notes during class. If you do not, you may be asked to leave the class; you will be marked absent and you will be unable to make up the missed work. This will also affect your participation grade.

Grading: Your final grade will be determined by the number of points you have accumulated by the end of the semester. The grading scale will be as follows: A 90-100%, B 80-89%, C 70-79%, D 60-69%, F 59% and below.

Submitting work

All work

must be typed in Times New Roman, 12 point, and double-spaced. In the upper left hand corner, put your name, class (English 3/Summer), professor's name, type of assignment, and date. Title your paper and center it. (Don't worry--we will go over all of this in class.)

Example:

Jesse Pinkman

Engl 1A

Jamie Barker

August 15th, 2023

What I Learned from My Chemistry Teacher

Academic Dishonesty

Cheating, copying, or plagiarizing others' work may, according to the Reedley College 2014-2015 Catalog, result in anything from a failing grade on the paper or assignment to a failing grade in the course.

You are only allowed to have me, a student in our class, a Reading/Writing Center tutor or Tutorial Center tutor help you with your papers.

STUDENTS WITH DISABILITIES:

If you have a verified need for an academic accommodation or materials in alternate media (i.e., Braille, large print, electronic text, etc.) per the Americans with Disabilities Act (ADA) or Section 504 of the Rehabilitation Act, please talk to me as soon as possible. Contact Disabled Student Programs and Services (DSP&S) at (559) 638-0332 or visit their website for more information: <http://www.reedleycollege.edu/services/dsp/LD.htm> (Links to an external site.)Links to an external site.Links to an external site..

Important Stuff:

Open a Google account. You will need to submit Google docs to CANVAS for most of your assignments.

You must check your school e-mail account on a regular basis. There are computers available at various computer labs (including the library) on campus. If you don't know how to set up or use e-mail, please get help from me, a tutorial center, or a lab. There is also a video tutorial on Web Advisor.

Please contact me by e-mail (jamie.barker@reedleycollege.edu) if you have any problems or questions about anything. I check my e-mail regularly and will get back to you promptly. If you have not heard back from me in 48 hours, please check to make sure that I received your e-mail.

I use Canvas, and you are responsible for the information posted there. If you need help with Canvas, see me or a computer lab assistant in the library.

Please make sure you have a Google drive for all of the work submitted to me. I am very careful with your work, but I sometimes make mistakes. Protect yourself by keeping everything stored on your drive until the course is finished and your final grade has been recorded.

What I Won't Allow in My Classroom

A classroom should be a safe place in which we can learn and explore ideas. If a student is disrespectful to me or anyone else in the class, they may be asked to leave the classroom, which results in an absence. If anyone refuses to leave the classroom when asked, or becomes threatening in any way, I will notify the campus police immediately.

Please DO NOT:

Talk when someone else is talking/presenting/lecturing/asking a question (rude)

Arrive late if you can help it (also rude)

Wear excessive cologne or strong body lotions/perfumes to class

Start packing up your stuff before I have dismissed the class

Interrupt or otherwise stifle someone else

Show signs of discrimination of any kind

Raise your voice or your hand to anyone in class--ever

GRADING

A = 100-90 excellent

B = 89.99-80 very good

C = 79.99-70 average

D = 69.99-60 needs improvement (not passing)

F = 59.99-0 fail (not passing)

In the process of completing this course, you will learn to:

Write a documented research paper of at least 1,500 words that includes:
~a sophisticated introduction, multiple body paragraphs, and conclusion

~a clearly defined, arguable thesis sentence

~supporting details that exhibit critical thinking and use credible secondary sources

~correct usage of MLA format, including a works cited page

~sentences that exhibit a command of the complex/compound with minimal comma splices, sentence fuses, fragments, and mechanics

~controlled and sophisticated word choice

~writing in third person/universal

~an avoidance of logical fallacies

~demonstration of an awareness of purpose and audience

~appropriate and purposeful use of quotations

~correct in-text citations

~an annotated bibliography of multiple sources

~an avoidance of intentional and unintentional plagiarism

Complete a timed essay independently in class

Summarize and comprehend college level prose (will include a full reading)

Ultimately, your academic career is up to you. I hope you are able to focus, do your best, and remember that you are the one who decides whether you succeed or not. There will always be obstacles; don't let them take you out. Stay strong and keep your eyes on the prize.

--Barker

