

COURSE SYLLABUS

CONTACT

INFORMATION

Instructor: Julie Kehoe

Email:
Julie.kehoe@reedleycollege.edu

INSIDE THIS SYLLABUS:

Student Responsibilities & Communication	2
Assignments	2
Academic Honesty	2
Grading & Drop Policies	3
Available Resources	3
Special Accommodations	3
Calendar	4

Welcome

Welcome to Math 11 at Reedley College! I hope you are excited to start a new semester and I look forward to working with you. Over the course of the next six weeks you will likely experience ups and downs. But you are not in this alone so take every opportunity to get to know me and other students in class. Persistence, hard work, and a good support system are key. If you put in the time and effort I know you will be able to succeed in this course!

Student Learning Outcomes

Upon completion of this course, students will be able to:

1. Organize, analyze, and utilize appropriate methods to draw conclusions based on sample data by using tables, graphs, measures of central tendency, and measure of dispersion.
2. Apply concepts and terminology of statistics.
3. Implement the rules of probability.
4. Collect data, interpret and communicate the results using statistical analyses such as confidence intervals, hypothesis tests, and regression analysis.

Course Description

This course is an introduction to statistical methods and techniques with applications in the fields of business, behavioral and social science, as well as in science, technology, engineering, and mathematics. Topics include descriptive measures of central tendency and variability, probability, binomial and normal distributions, random variables, sampling, estimating, hypothesis testing (parametric and nonparametric), correlation and regression. (A, CSU-GE, UC, I) (C-ID MATH 110)

Advisory: Eligibility for ENGL 1A

Course Materials

Required

- ⇒ Easy computer and internet access
- ⇒ Microsoft Excel

Recommended Apps/Websites

- ⇒ Canvas
- ⇒ Khan Academy

Important Dates

- June 24 Start of 6-week Summer Session
- July 1 Last Day to Drop without a 'W'
- July 4 Independence Day Holiday (no classes, campus closed)
- July 13 Last Day to Drop with a 'W'
- August 2 End of 6-week Summer Session



"It's important to learn math because someday you might accidentally buy a phone without a calculator."

Student Responsibilities & Communication



Responsibilities

While this course is delivered entirely online, it is every bit as much work as a face to face math class. This is not a self-paced course. All assignments have deadlines that you will be expected to meet. It is your responsibility to stay up to date in this class by checking the schedule, emails, announcements, and discussion forums.

Because this course is 100% online, you are expected to have a reliable and easily accessible internet connection. Technical problems are not an excuse for missing assignments. So don't wait till the last minute to complete assignments.

Communication Policy

There are a variety of ways that you can get in contact with me. However, email is my preferred means of communication and will likely get you the fastest response. If you have not heard back from me within two days then assume I did not receive your message and try to contact me again.

HELPFUL HINT:
Due dates are the day you should be done with an assignment not the day you should begin it. Work ahead whenever possible so you won't be pressed for time!

Assignments

Homework Practice

Weekly modules have a set of specified outcomes, study materials, and homework practice. You have an unlimited number of attempts on homework assignments with only your highest score counting toward your grade.

Discussions & Excel Projects

There will be a weekly discussion assignment and/or an Excel project to help deepen your understanding of the material.

Exams & Reviews

Each week there will be a review designed to prepare you for the weeks' exam. Exams will have a time limit. You will have two attempts up until the due date with only your highest score counting toward your grade.

Note: Do not log out in the middle of a quiz/exam or your score will be automatically recorded.

Late Work & Extensions

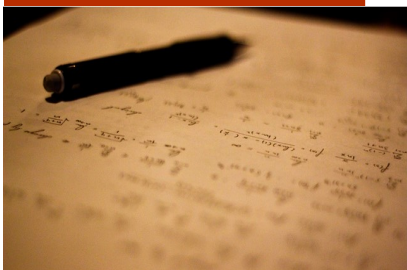
You can continue to work on homework assignments **past their due date with a 40% penalty** until the time of the final exam. No work will be accepted after August 2nd.

Exams must be taken by their due date. You will be allowed an extension on **one** exam over the course of the semester, no questions asked. **You will have one additional week after the assignment was originally due to complete it.** Email me to request an extension on a exam.

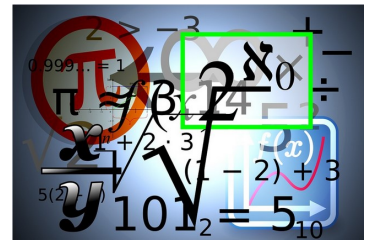
Academic Honesty

Students are entitled to the best education that the college can make available to them, and it is their responsibility to ensure that this education is honestly attained. Because cheating and collusion in dishonest activities erode the integrity of the college, each student is expected to exert an entirely honest effort in all academic endeavors. **Academic dishonesty in any form is a very serious offense and will incur serious consequences, including but not limited to receiving a grade of F on the assignment or in the course.**

Cheating is the act or attempted act of taking an examination or performing an assigned in a fraudulent or deceptive manner, such as having improper access to answers, in an attempt to gain an unearned academic advantage. Cheating may include, but is not limited to, copying from another's work, supplying one's work to another, using or displaying notes or devices inappropriate to the conditions of the examination, or allowing someone other than the officially enrolled student to represent the student.



Grading & Drop Policy



Grading Scale:

- A 89.5% - above
- B 79.5%-89.4%
- C 69.5%-79.4%
- D 59.5%-69.4%
- F 59.4% and below

Your first assignment in this course is the syllabus quiz. If you have not logged on to Canvas and completed the **Syllabus Quiz by Wednesday, June 26th at 11:59pm** then you will be considered a no show and dropped from the class.

You MAY be dropped for any of the following reasons:

- Failing to complete the Syllabus Quiz on time**
- Consistently missing assignments**
- Missing an entire week of assignments**
- Missing more than one exam**

Grading:

- 40% Exams and Excel Projects
- 40% Homework Practice
- 20% Discussions

I will be checking regularly to ensure you are keeping up with the schedule of assignments.

Grades will be tracked in the Canvas Gradebook.

“Do not worry to much about your difficulties in mathematics, I can assure you that mine are still greater.” - Albert Einstein

Math Help

Ways to get help from me!

- ⇒ I am just an email away if you have questions.
- ⇒ I can video chat with you through Canvas using Confer-Zoom.
- ⇒ Message me through Canvas (there’s an app for that!).

Smarthinking Online Tutoring

Smarthinking is a **free** online tutoring service available in Canvas. Watch the [video](#) in the orientation module to learn more!

Tutorial Center, RC Library

The Tutorial Center is a free tutoring resource available to all Reedley College students during the summer. The center offers tutoring facilitated by well-qualified student tutors. There are also computers and online access available to students with online math homework.

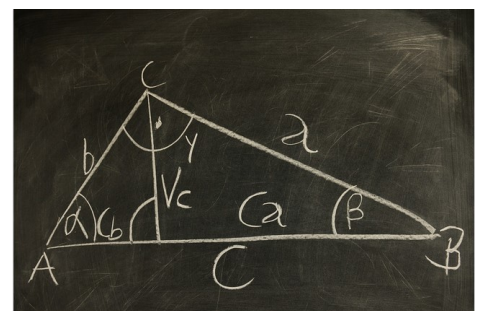
Open June 18 - July 27, M-Th 9-2

Accommodations for Students with Disabilities

Disabled Students Programs & Services (DSP&S) is designed to provide specialized services and accommodations that assist students with documented physical, psychological and learning disabilities reach their maximum potential while achieving their educational goals. Staff specialists interact with all areas of the campus to eliminate physical, academic and attitudinal barriers. Disabled Stu-

dents Programs & Services takes a personal interest in meeting the special needs of students with disabilities.

If you have a verified need for an academic accommodation or materials in alternate media (i.e., Braille, large print, electronic text, etc.) per the Americans with Disabilities Act (ADA) or Section 504 of the Rehabilitation Act, please contact me as soon as possible.



Tentative Assignment Schedule



Week	Topic	Assignments
0	Getting Started	Review Course Materials Norm Setting
1	Descriptive Statistics June 24-30	Syllabus Quiz Discussion – Introduce Yourself Homework Practice 1.1-1.6 Week 1 Excel Project Week 1 Review Exam 1
2	Probability July 1-7	Homework Practice 2.1-2.4 Week 2 Review Exam 2
3	Probability Distributions and Confidence Intervals July 8-14	Discussion Homework Practice 3.1-3.3, 4.1-4.2 Week 3 Excel Project Week 3 Review Exam 3
4	Hypothesis Testing July 15-21	Discussion Homework Practice 5.1-5.3 Week 4 Excel Project Week 4 Review Exam 4
5	Hypothesis Testing with Multiple Samples July 22-28	Discussion Homework Practice 6.1-6.4 Week 5 Excel Project Week 5 Review Exam 5
6	Chi-Square Correlation and Regression July 29-Aug 2	Discussion Homework Practice 7.1, 8.1-8.3 Week 6 Excel Project Week 6 Review Exam 6