

# ENGLISH 1A— ONLINE: READING AND COMPOSITION

FALL 2016  
SECTIONS 56290 AND 56293

**INSTRUCTOR: PROFESSOR CAREY KARLE**  
Phone: 559-638-0300 ext. 3421  
E-mail: carey.karle@reedleycollege.edu

## Welcome to English 1A Online



MOVING  
THOUGHTS—  
FROM PEN TO  
PAPER

*The purpose of this course is to assist you on your journey to becoming a better academic reader and writer. However, in order for this class and me to assist you in this adventure, you must believe that reading, thinking, and writing well are important and serve a purpose in your life. You have to be willing to put in the time and effort necessary for success.*

### Catalog Description for English 1A:

Students will read, analyze, and compose college-level prose, with emphasis on the expository; study writing as a process; explore different composing structures and strategies; edit and revise their own writing; and conduct research (gather, organize, evaluate, integrate, and document information), culminating in a term research paper and annotated bibliography. Students will write a minimum of 6,000 words in formal academic language.

## Student Learning Outcomes

Upon completion of this course, students will be able to:

- A. Write a documented research paper of at least 1,500 words that includes:
- a sophisticated introduction, multiple body paragraphs, and conclusion
  - a clearly defined, arguable thesis sentence
  - supporting details that exhibit critical thinking and use credible secondary sources
  - correct usage of MLA format, including a works cited page
  - sentences that exhibit a command of the complex/compound with minimal comma splices, sentence fuses, fragments, and mechanics
  - controlled and sophisticated word choice
  - writing in third person/universal
  - an avoidance of logical fallacies
  - demonstration of an awareness of purpose and audience
  - appropriate and purposeful use of quotations
  - correct in-text citations
  - an annotated bibliography of multiple sources
  - an avoidance of intentional and unintentional plagiarism
- B. Complete a timed essay independently in class
- C. Summarize and comprehend college level prose (will include a full reading)

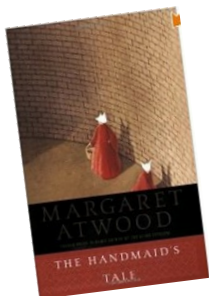
### Special points of interest:

- ◆ Students who utilize the RC Writing Center when taking English 1A have a higher pass rate than those who do not use the RC Writing Center.
- ◆ The RC Writing Center can be used online!
- ◆ Students who do not procrastinate and are well organized generally do better in online classes.



### Inside this issue:

Required Texts and Supplies	2
Required Course Work	2
Weekly-Semester	3
Course Objectives	4
Lecture Content	5
Email	6
Computer Requirements	7
Plagiarism Information	8
Paper Policy	9
Important Dates	10



## Required Texts and Supplies

Atwood, Margaret. *The Handmaid's Tale*. Anchor Books, 1998. ISBN: 978-0385490818

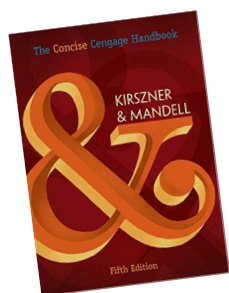
Bradbury, Ray. *Fahrenheit 451*. The 60th Anniversary Edition. Simon & Schuster, 2013. ISBN: 978-1-4516-7331-9

Kirszner, Laurie G. and Stephen R. Mandell. *The Concise Cengage Handbook*. 5th ed. Cengage Learning, 2017. ISBN: 978-1-305-66812-6

Ream of Paper. You **MUST** print the syllabus, schedule, essay guidelines and more.



**You MUST purchase hard copies of the books.  
NO E-books allowed.**



## Required Course Work

	Required	Grading Scale
Class Participation		
Quizzes	5%	90-100% = A
Discussion Boards, Journals, Etc.	10%	80- 89% = B
Timed Essays <b>and</b> Two Annotated Works Cited	10%	70- 79% = C
Two Essays <b>and</b> Final Annotated Works Cited	55%	60- 69% = D
Research Synthesis Paper	20%	0- 59% = F

*Class participation is defined as reading the class assignments; joining in the exchange of opinions in group and/or whole class discussion; starting appropriate new items for discussion; and, perhaps most important of all, asking questions.*

The lowest two quiz scores are dropped and the remaining scores are averaged.  
**A missed quiz is equal to a zero, and no make-ups are allowed.**

I do not accept late work, nor do I allow for make up work. This means you need to be online and do the work as assigned. The only exception for late work is for the first two essays and the first two annotated works cited—and this is outlined on page eight.

Remember, I do not allow for make up work.

This means you need to stay focused  
**and**  
check the schedule early each week.

Students who have used E-books in my online AND face-to-face classes have not done as well as those who use hard copies of books. Students tell me, "I should have listened and not used an E-book!"



## Checking Grades

Grades are available on Canvas. You should check your grade regularly.

If a grade has not been recorded, first check email and/or weekly announcements to see if the assignment (such as an essay) has been graded. Please, do not email a day or two after an essay has been submitted asking for the grade. It does take a week or two to grade essays.

**Do not email me during the final three weeks of the semester for a grade check. Do not email during the final three weeks asking what you need on the final essay in order to pass. Grades are available on Canvas.**

You can check your grade and play the "what do I need to pass" game on your own! Sorry, but this game is exhausting! You should work to earn the highest grade possible, not the minimal grade just to pass.

## Weekly and Semester Schedule

For the most current weekly schedule refer to the Home page on Canvas.

Most assignments for the semester can also be viewed through the semester schedule. Click on the Syllabus and Schedule link on Canvas and find the "Tentative Semester Schedule." Here you will find reading assignments, discussion board due dates, essay due dates, and more.

The Canvas calendar does NOT include readings and time needed to read, think, and study. Do not simply rely on the Canvas calendar. While an assignment might not be due until Sunday, there might be quite a bit of work involved in that assignment. Thus, working on all tasks the day they are due is NOT the best way to approach this class.

Each week's assignments will be posted under the various "steps" links on Canvas and a reminder emailed to you usually by Friday (for the following week).

**The weekly email always contains the most updated/accurate information.**

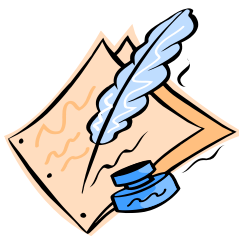


**CHECK YOUR GRADE  
REGULARLY  
THROUGHOUT THE  
SEMESTER**

*"The end  
depends upon  
the beginning"*  
– The  
Emperors  
Club



**CHECK OFF ASSIGNMENTS  
AS THEY ARE COMPLETED.  
THIS WILL HELP YOU TO  
STAY ORGANIZED.**



WRITING, WRITING,  
AND MORE WRITING.

*Research is  
to see what  
everybody  
else has seen,  
and to think  
what  
nobody else  
has thought.*

—*Albert Szent-  
Gyorgyi*

## Course Objectives

In the process of completing this course, students will:

- A. Write multiple essays of at least 1,500 words, including at least one research paper with documentation.
- Arrange and integrate ideas in a multiple body essay, complete with topic sentences, supporting data, and background, as necessary.
  - Indicate an arguable thesis.
  - Gather, analyze, and synthesize peer-reviewed sources and/or original research such as interview, survey, or observation.
  - Employ MLA formatting guidelines.
  - Reduce dependence on the instructor's guidance; students will ultimately independently and accurately recognize and self-correct errors in sentence construction, punctuation, and mechanics.
  - Craft increasingly mature and cogent writing while choosing the appropriate tone and academic voice.
  - Practice sound choices in identifying and avoiding logical fallacies.
  - Employ appropriate use of third person universal.
  - Identify appropriate audiences for their compositions.
  - Employ quotations, discriminating among sources for accuracy and validity.
  - Employ MLA formatting guidelines for Work Cited Page and in-text citations.
  - Develop an annotated bibliography from sources for a research paper.
  - Recognize the appropriate use of sources, while avoiding intentional and unintentional plagiarism.
- B. Write an organized essay with thesis and adequate support independently within a class period.
- C. Read and understand college level prose, including:
- identifying the model, summarizing the thesis, and locating supporting information.
  - naming rhetorical devices such as irony and parallelism and translating metaphorical language, so as to determine an author's intent, both explicit and implicit.
  - answering questions from assigned reading differentiating between an author's intent and personal reaction.
  - describing, evaluating, and questioning the purpose, audience, organization, and style of assigned readings.



## Lecture Content

- A. Expository Essays and a Narrative-Descriptive Essay (at the instructor's discretion)
  - 1. Reading, discussion of models
  - 2. The writing process
  - 3. Thesis and support
  - 4. Paragraphing, topic sentence
  - 5. Introductions and conclusions
  - 6. Use of showing details to support assertions
  - 7. Editing for grammar, punctuation, and usage
- B. Planning, Developing, and Writing the Research Paper
  - 1. Library and Internet research
  - 2. Evaluation of sources for accuracy and reliability
  - 3. Evaluating and selecting evidence which supports a defensible thesis
  - 4. Summarizing with accuracy and academic respect
  - 5. Paraphrasing with attribution
  - 6. Use of quotation to develop, support, or refute an idea
  - 7. Planning, organizing, and outlining information and ideas
  - 8. Correct MLA documentation
  - 9. Completion of an annotated bibliography
  - 10. Reading discussions of arguments
  - 11. Reasoning, refuting opposition
  - 12. Avoiding fallacies
- C. Full-length work: most instructors will include reading a full-length novel, book, short stories or poems.
- D. Assignments based on the work will vary.
- E. In-class timed essay
  - 1. Planning and organizing ideas under pressure
  - 2. Composing quickly
  - 3. Editing independently and within given time
- F. College-level reading skills
  - 1. Analyzing/synthesizing
  - 2. Interpretation
  - 3. Evaluation
  - 4. Compare/contrast
  - 5. Drawing conclusions
  - 6. Distinguishing fact from inference
  - 7. Summarizing/paraphrasing

*Writing  
is  
thinking  
on paper.*

*- William  
Zinsser*

*Easy  
writing  
makes hard  
reading.*

*- Ernest  
Hemingway*

Research is formalized curiosity. It is poking and prying with a purpose.  
—Zora Neale Hurston



EMAIL  
USE IT!  
USE IT WISELY!

If we knew what it was we were doing, it would not be called research, would it?  
—Albert Einstein

## **Email—Important!**

**An e-mail address is essential.** The college uses college email accounts. You must use your college account for this and any Reedley College class. You can set your sccd.com email to forward to another email account. Information about school email can be found on the home page of the college website.

**I use e-mail to communicate with the class as a whole, with groups, and with individuals.** Whether you have Internet and e-mail access at home or on campus, you should plan on checking your e-mail at least every other day—once a day is preferred. DO NOT use your cell phone as the primary means of checking/reading email. Phone screens are too small; therefore, you are not easily able to view the whole picture when reading email. Additionally, many phone programs do not allow for spell check on email messages, so refrain from using your phone as a primary means of communication with me.

**When you send an email, you must be specific in the message and always sign your name.** Your email address does not necessarily identify who you are unless you are using your sccd account. *I do not read or respond to email if I do not know the sender.*

**In the subject line, include the class and section number.** I teach four classes and generally at least two are online classes. In order to respond quickly, I need to match you to the correct class—which means you need to add the section number as well (i.e., English 1A-56290 or 56293)

**In addition, remember, when you email me, your instructor—your English instructor—you are not text messaging or emailing a friend.** You need to run spell check and think about the way you are writing, for example, do not use lower case i's when using the first person pronoun "I".

**After sending an email, look for a response!** This might sound like common sense, but I am always surprised by students who send an email with an urgent question or an important question about an essay or grade, to which I reply in a timely manner with a question or further information, and it takes three or four days for a response from the student.

**One more note about email—do not send email out of anger or frustration.** Do not send an email immediately after seeing a grade if the grade was not what you expected. If you have a question about a grade or comments made on an essay, take some time to think carefully about what you want to ask.

## **Attendance Policy**

Your online contact will be monitored through the Canvas discussion board, essays, miscellaneous assignments, and e-mail. **You need to make your presence known every week.**

Failure to post to the discussion board for two weeks (excluding weekends) and/or complete assignments, without contact with me, will mean that you are no longer participating in the class, which means you may be dropped from the class.

***If you do not complete ALL assignments for day one AND for weeks one, two, and three, you will be dropped from the class.***

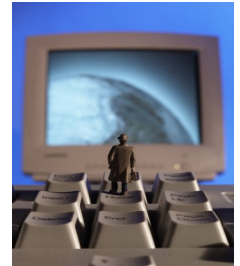




## Computer Requirements

### Skills Needed:

- Know basics of word processing (saving files, using spell check, using grammar check, moving text, using the help function, etc.)
- Know how to access and navigate the Internet (use a browser, utilize search engines, save and or print from the Internet)
- Know how to send e-mail and attachments



WHAT YOU  
NEED TO KNOW

### Hardware Needed:

- Pentium (PC) or Mac equivalent
- Home Internet access is desirable. You can use the computers on campus, but they are not always available. You need to know when each lab is open and available for drop-in use. Also, know if your local library has computers available with Internet access.
- *If your home computer crashes, is in need of repair, or you lose Internet access, you must find an alternative way to complete the required work on time for this class. This means, of course, that you need to constantly back up the work from your hard drive to a flash drive or other source. This also means avoiding completing assignments at the last minute.*

### Software Needed:

- The most common word processing format is Microsoft Word. If you use another word processing program, you will need to learn to save your work in Rich Text Format (RTF).
- I do not accept Google Docs. If you use Google Docs, you MUST copy/save your file in WORD before uploading the file to TURNITIN.
- *Do not use Pages, Word Pad or Microsoft Works. These programs are not powerful enough AND I cannot read these files.*
- *Do not submit PDF versions of your work! I need to be able to use the Comments function in Word to respond to your essays and other assignments.*
- Adobe Reader. This can be downloaded for free. Essays may be returned to you in PDF form. Most handouts will also be uploaded as PDFs.

*"The greatest part of a writer's time is spent in reading, in order to write: a man will turn over half a library to make one book."*

— Samuel Johnson, *The Life of Samuel Johnson*

KNOW YOUR  
COMPUTER!



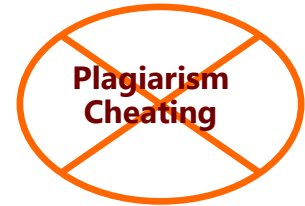
## Accommodations for Students with Disabilities

If you have a verified need for an academic accommodation or materials in alternate media (i.e., Braille, large print, electronic text, etc.) per the Americans with Disability Act (ADA) or Section 504 of the Rehabilitation Act, please contact me as soon as possible.

*I know one thing  
--that a certain  
amount of pride  
always goes  
along with a  
teaspoonful of  
brains, and that  
this pride  
protects a man  
from  
deliberately  
stealing other  
people's ideas.  
That is what a  
teaspoonful of  
brains will do for  
a man--and  
admirers had  
often told me I  
had nearly a  
basketful--though  
they were rather  
reserved as to  
the size of the  
basket.*

- Mark Twain

## Plagiarism and Cheating



If it is discovered that you have cheated or plagiarized on an assignment—at any point during the semester—you will receive a zero on that assignment and perhaps a failing grade in the class. Additionally, a plagiarism report will be filed with the administration. *Plagiarism of the final essay for the semester will result in a failing grade in the class.*

*Plagiarism means to pass off the work of others as your own. Plagiarism is dishonest and represents an attempt to obtain the benefits of a college degree without doing the work.*

For more information about plagiarism and cheating, refer to the Fall 2016 Class Schedule (Campus Policies).

**Bottom line:** Do not copy someone else's words or ideas without giving him/her credit. Do not use another student's paper as your own. Do not use a paper you wrote from another class in this class. Do not use a paper you wrote for this class in a previous semester. Do not have another person write the paper for you. All of these are forms of cheating. You will receive a zero on the assignment (whether it is something plagiarized on your papers or on the discussion board) and a report will be filed with the college administration for their review. Please be advised that you will submit the final drafts of your papers through Turnitin.com (through links on Canvas), so if you do plagiarize, you will be caught.

## Late Paper Policy

The first two essays and the first two annotated works cited assignments are accepted up to one week late. However, the grade on these essays and works cited assignments is dropped one full letter grade. This means if the essay or annotated works cited earns an A, the grade will be dropped to a B. This policy is only for the first two essays and first two annotated works cited assignments.





## Paper Policy

- ⇒ All papers must be revised and typed in accordance with MLA guidelines.
- ⇒ All work leading to your final paper must be kept—for example, all prewriting, rough drafts, peer responses, and any other work produced. **There are no exceptions to this policy.**
- ⇒ Word Processing Formats: The most common word processing format is Microsoft Word. If you use another word processing program, you will need to learn to save your work in Rich Text Format (RTF). *Do not use Microsoft Works or any other program that does not allow for easy conversion. Using WordPad is unacceptable. If you have Pages, you must learn to convert files to so they can be submitted to TURNITIN and read by others. I do not accept Pages files, Google Docs, or PDF files!!!*
- ⇒ If an essay is due and you cannot access Canvas, probably Canvas is down. Don't stress—wait a little bit and try again. When this happens, watch for email messages from me. Of course, if an essay is due and the Canvas is down, I will not hold you to the original due date. I will email and post to Canvas (once it is up again) the revised deadline.
- ⇒ All essays will be turned in through TURNITIN through links on Canvas. *TURNITIN is a website that detects plagiarism.* This means that if you copy and or copy/paste writing from a website, another published source, or from a previous student of mine, without properly quoting and citing the source or sources, the plagiarism will be detected. You will be "caught."
- ⇒ Should I discover while reading your essay that you have not run spell check or sufficiently proofread and edited your work, I will discontinue reading and return the essay to you. You will then have until the following week to revise the paper (the return date will be clearly marked for you). The highest grade such a "returned" paper can receive is a "C".
- ⇒ You will be required to share some of your essays in progress for peer review. We will have at least one type of Writer's Workshop for each essay. All students are required to post a rough draft or outline (as directed) for each Writer's Workshop (with minimum writing completed as announced in weekly emails). The Writer's Workshop will take place on the discussion board in a forum set up specifically for each essay.
- ⇒ We will be doing various types of writing assignments this semester—and each essay will be based on a reading. Before beginning an essay, a discussion will be completed. The discussion boards receive a grade separate from the essay.
- ⇒ With all our writing assignments, process will be focused upon as well as final product.
- ⇒ *At my discretion, sentences and/or paragraphs may be taken from essays or other assignments and shared with the class to help illustrate grammar concepts, writing concepts, MLA guidelines, and more.*
- ⇒ *Graded papers are returned to you through the Canvas Grades book and/or through GradeMark generally within two weeks after their due date. It is expected that you open, print, and read all comments on all returned essays. They contain comments about the essay and about writing to help you grow and improve as a writer.*
- ⇒ If something happens to your computer and/or Internet and an essay (or other assignment) is due, **email me, of course, using another computer or your phone.** Do not wait until everything is back up before contacting me. Moreover, you need to back up your work on a moveable storage device. Public libraries have computers with Internet access—work can be completed in places and on computers other than those we have at home!

### ATTENTION:

**Failure to turn in the first essay will result in being dropped from the class.**

**It is not possible to pass this class unless all essays are completed.**



Phone: 559-638-0300 ext. 3421  
E-mail: carey.karle@reedleycollege.edu

Office: CC1—214

**Office Hours:**

Monday 11:00-11:50  
Tuesday 11:00-11:50  
Wednesday 11:00-11:50  
Friday—Virtual Office Hour via Email 7:00-7:50 AM  
Additional Office Hours by mutual appointment.

There are no mandatory meetings for this class; however, you are encouraged to visit or call during my office hours.

**Important Dates**

August 15	M	Start of Fall 2016 semester
August 26	F	Last day to drop a Fall 2016 full-term class for full refund
September 2	F	Last day to register for a Fall 2016 full-term class (in person)
September 2	F	Last day to drop a Fall 2016 full-term class to avoid a "W" (in person)
September 5	M	Last day to drop a Fall 2016 full-term class to avoid a "W" (on WebAdvisor)
September 5	F	Labor Day Holiday (no classes held, campus closed)
September 9	F	Last day to change a Fall 2016 class to/from a Pass/No-Pass grading basis
October 14	F	Last day to drop a full-term class (letter grades assigned after this date)
November 11	F	Veterans' Day (no classes, campus open)
November 24-25	Th-F	Thanksgiving Holiday (no classes held, campus closed)
December 12-16	M-F	Fall 2016 final exams week

**Time Commitment & Essential Information**

◆ When this class is taught face-to-face, students meet with an instructor/class for FOUR unit hours. The average amount of homework for a unit hour is two-three hours. This means that the time needed for this class is about TWELVE to SIXTEEN (12 -16) hours per week. It is important to understand the time commitment necessary to be successful in this or any online class. In addition, this course is still controlled by the eighteen week semester confines of the college. This necessitates deadlines for essays and other assignments. While online classes do offer flexibility, there are limitations. Students can not complete work in any order and at any time during the eighteen weeks. Assignments, skills, and knowledge are expected to build on one another. Final grades are due the Monday after final exams; therefore, deadlines for assignments during the semester must be respected.

◆ It is your responsibility to stay informed concerning any changes of assignment due dates, readings, etc. This means you should check the Canvas announcements on a weekly basis and your e-mail daily (or at least every other day).

◆ It is your responsibility to officially withdraw from this and/or any course. Failure to do so may result in an "F" grade being awarded.

◆ Because this is an online class, and we are using Canvas, a class e-mail list is generated. This e-mail list is to be used for school related messaging only. Any other use of the e-mail list can result in your being dropped from the course. Continued sending of unsolicited e-mail could be viewed as a form of harassment. Appropriate action will be taken as necessary per school policy.

◆ Rules for Netiquette apply in all emails, journals, discussion boards, etc. To review rules, copy and paste this link: <http://www.albion.com/bookNetiquette/0963702513p32.html>

**Helpful Hints**

◆ Keep a copy of each of your papers. This protects you if I should happen to lose one of your papers. You should save your work on your hard drive and back up your work to a USB or other storage device.

◆ Keep track of your work. You should save all of your work until the end of the semester so you can double check your final recorded grade. Of course, check your grade regularly throughout the semester.

◆ Should you discover that you are unable to regularly attend class (online) for whatever reason, it is imperative that you discuss this with me as soon as possible. Telling me of work schedule changes, illness, family emergencies, etc. after missing several days/weeks is unacceptable.