

# INTRODUCTION TO PSYCHOLOGY

## Online Course

### Psychology 2 Spring Semester 2010

**Instructor:** Silvia M. Bigatti, Ph.D. - [silvia.bigatti@gmail.com](mailto:silvia.bigatti@gmail.com)

**Textbook:** Introduction to Psychology (2008) by Plotnik—8th Edition Thomson Wadsworth. Once you enter the classroom, you will see an announcement about options for purchasing this book.

**Access Code for BlackBoard:** In order to access and use the BlackBoard classroom, you will need to purchase an access code. You can either purchase that at the Reedley Bookstore or online through the publisher at [www.ichapters.com](http://www.ichapters.com). More on this in the announcements page in the classroom (which you can access now).

**COURSE DESCRIPTION:** This course will familiarize students with the science of psychology.



**COURSE FORMAT:** The class is online format, i.e. you are required to complete all assignments, discussion posts, and weekly quizzes within the given deadline and within the online classroom. You are expected to read and comprehend the material before the required deadlines. During each week, students will complete posts, responses, and other reflective writing assignments. These are designed to enhance the learning of the material. The readings, assignments, and discussions prepared for this class are designed to enhance students' abilities to engage in critical thinking. Specific to this course, critical thinkers are able to a) “synthesize information in order to arrive at reasoned conclusions;” b) “evaluate the logic, validity, and relevance of data” and c) “use knowledge and understanding in order to generate and explore new questions.” Therefore, to be successful in this course it will not be sufficient to simply repeat what is in the text. In depth understanding of the material and issues will be assessed throughout the course.



**IMPORTANT WARNING!!!:** Online learning is not for everyone. You need to be a very self-directed and personally responsible student to be successful in online courses. Online you do not see your instructor twice a week, reminding you of what's due next class, or discussing other projects. Therefore, you need to seriously consider your motivation and skills before you embark on this course.

Computer problems, electrical shortages, and other malfunctions do occur and it is your responsibility to complete the work by the deadline *regardless of* any of these problems. Please do not write to me to ask for extensions because your computer crashed or you were unable to 'get online' to complete the work. You are given several days to complete an assignment, therefore, if your technology fails on the last day the assignment is due, you will not be excused from the deadline.

*To clarify: Under no circumstance will late work be accepted at any time in the term!*

I recommend you always complete your work before the deadline to prevent any type of problem of this sort. It is recommended for students to have a LAN/DSL hookup for this class because wireless connections can fail at any given time. Wireless users are responsible for any individual problems that occur related to class deadlines.



### REQUIREMENTS

#### Discussion Board (30 points each week)

You are expected to post two times (total) to the discussion board each week, which you can access through various locations on the site. One of these postings will be your answer to your assigned discussion thread (see below). If you fail to answer the assigned questions, a zero will be given for those postings. **Under no circumstances** will make-ups be granted after the week is over (posting before the end of the week but after due date will lose points). *A posting is considered sufficient if it reflects the reading assignments, cites and references sources appropriately, and shows evidence of critical analysis of the topic reviewed.* Your weekly post must be made by Wednesday each week (except for weeks 1 and 18).

Because some weeks you are assigned 2 chapters to read, you may be required to answer two items within your assigned thread. Other weeks you will have the option of one or another item to choose to answer. This is clearly stated each week (it either says 'or' or it just has two items to post within the same thread). Make sure you are ready for this as this means that sometimes you will have double the work on the board.



In addition to this post to a discussion thread, you will respond to a classmate who posted on a *different* thread. The same expectations used to grade your post will be used to grade your response to a classmate. Finally, if classmates respond to your thread you are to respond to them if appropriate. Remember, you must post at least **2 times** each week!

Based on the first two letters of your last name, your assigned weekly thread is:

Aa-Gr: question 1  
Qw-St: question 4

GS-Ma: question 2  
Su-Zy: question

Mb-Qu: question 3

To earn points, postings need to be thoughtful and clearly refer to the week's readings. In addition to citing the textbook pages, students may cite additional primary journal sources, or in rare cases internet sites, to support positions. *Postings must demonstrate that you have read and reflected upon the assigned readings and implemented the class material. You are encouraged to give examples of previous knowledge and experience as it relates to the topic at hand.*

I will regularly read your posts and responses. However, I will likely only respond to posts when I see clear misinterpretations of the material, or students who are not following the course etiquette. Otherwise, you should expect to find feedback from me regarding your work in the gradebook comments section for each week. It is imperative that you read these as they will let you know what you are doing right and where you need to improve or change your performance. Most of my communication with you will occur in an individualized fashion through this medium.



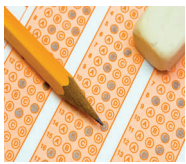
# INTRODUCTION TO PSYCHOLOGY

## Online Course

### Quizzes

#### Module Quizzes (56 points each)

You will complete multiple choice/true false/matching quizzes covering the chapter readings. There will be questions that are factual in nature and others that are conceptual in nature (i.e. applied, integrative, inferential). Quizzes will become available at 12:00 a.m. Monday and are to be completed by 10 p.m. Sunday of each week. No make-ups will be allowed **under any circumstances**, so make sure you don't miss quizzes. **Anything and everything** that is in the chapter has the potential to show up as a quiz question. It is your responsibility to complete each weekly quiz during the days allotted. Do not wait until the last minute to take the quiz.



You will have two hours to complete 56 questions on each chapter quiz. This is not an open book quiz, and the time constraint to some degree guarantees that you will study hard before you sit to take the quiz. Therefore, I trust that you will follow the Reedley College honor code and complete the quiz on your own, closed-book and without any efforts to engage in academic misconduct (which includes discussing the questions and answers with other students in the class).

When you have two chapters in a week, you will have two module quizzes that week, one for each chapter. This is quite a bit of work, so plan ahead and get these done before the deadline!

#### Short Essay Module Quizzes (25 points each)

On weeks in which you only have one chapter to read, you will have a short essay quiz in addition to the module quiz. Quizzes will become available at 12:00 a.m. Monday and are to be completed by 10 p.m. Sunday of each week. No make-ups will be allowed **under any circumstances**, so make sure you don't miss quizzes. **Anything and everything** that is in the chapter has the potential to show up as a quiz question. It is your responsibility to complete each weekly quiz during the days allotted. Do not wait until the last minute to take the quiz.

You will have one opportunity, and unlimited time, to complete 5 essay questions on the week's chapter. *You are welcome to have your book open and with you for this quiz*, but you will not do well unless you have studied and understood the material, even with the open-book option. Again, I trust that you will follow the Reedley College honor code and complete the quiz on your own and without any efforts to engage in academic misconduct (which includes discussing the questions and answers with other students in the class).

In summary, you can earn between 111 and 142 points each week

- A) 30 for discussion board work
- B) 56 for first module quizzes
- C) Either 56 for a second module quiz or 25 for a short essay quiz

That is a total of 2,215 possible points for the entire term.



# INTRODUCTION TO PSYCHOLOGY

## Online Course

### Grading Scale



2148-2215 A+	2082-2147 A	1993-2081 A-
1927-2080 B+	1861-1926 B	1772-1860 B-
1706-1771 C+	1639-1705 C	1551-1638 C-
1484-1550 D+	1418-1483 D	1329-1417 D-

**Policy on Incompletes.** If for any circumstance you find that you need to stop participating in the class *and you meet guidelines* for an Incomplete, I will be happy to assign you an incomplete for the class. If you simply stop participating and do not complete all of your coursework, your final grade will be calculated based on "0" grades for the assignments/quizzes that are missing.

\*\*\*\*\*

**Policy on Academic Misconduct:** You are expected to be above reproach in scholastic activities. Students who violate rules on scholastic dishonesty are subject to disciplinary penalties, including the possibility of failure in the course and dismissal from the college. Please be advised that random checks for plagiarism will be conducted using the Turnitin.com program. All assignments, discussion posts, and quizzes are to be completed on an individual basis; collaboration with other classmates is **not warranted** unless instructed otherwise. Any indication of cheating on any of your work will be followed up with a full investigation, cheating online is especially controlled.

\*\*\*\*\*

**Classroom etiquette:** There should be, under no circumstances, any disrespect or personal attacks on any of the discussion posts. In addition, refrain from discussing any controversial issues that are political or related to religion, race, sex etc. We do want in depth reflection on your posts, but they need to be respectful and the topic needs to be clearly related to what the class is doing. Also, if anyone feels offended by another classmate, please stop and think before responding because it is easy to misinterpret written material.

\*\*\*\*\*

**Feedback from Instructor:** Given the size of the class, you are not likely to get your work returned to you with feedback. Instead, *I will comment on your performance within the gradebook in the comments box.* You must read my comments to understand why you lost points if you did, or what in particular you did well if you earned full points. Also, other comments relevant to your work will be posted there, which may include further discussion of the material, questions to you, or information that I may think you need or would find useful.