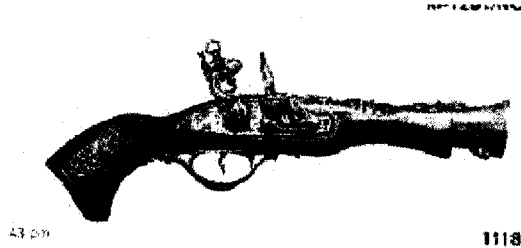


CRIMINAL JUSTICE

CJ13

FIREARMS CLASS



SYLLABUS

- INSTRUCTOR:** Ray Clarkson
- OFFICE:** FE-1A (North Entrance)
- OFFICE PHONE:** (Voice Mail) 638-3641 Extension 3263
- CLASS MEETS:** Tuesdays/Thursdays @ 01:00 to 2:50 P.M.
- DROP DEADLINE:** March 10, 2000

COURSE DESCRIPTION

The use and care of firearms: explanation of situations warranting the use of firearms; legal and moral provisions and restrictions; policy covering the use of firearms in the performance of duty; safety precautions; nomenclature; dry-firing and familiarization and the firing of handguns and shotguns.

PURPOSE

To familiarize students with handguns and shotguns from a professional point of view, for the purpose of proper and lawful use of these weapons in those situations were deadly

*Attendance
Final Exam*

force is required. Also the appropriate care, maintenance, and safe keeping of these weapons at home or in the workplace.

COURSE OUTLINE

- I Overview and Orientation**
 - A. Statistics & general information
 - B. Civil, legal, & moral obligations
 - C. Shoot, don't shoot

- II Historical Development**
 - A. Asia (black powder)
 - B. Development of implements of delivery

- III Nomenclature**
 - A. Cartridge
 - 1. Configuration
 - 2. Ballistics
 - B. Handgun
 - 1. Field stripping
 - C. Shotgun

- IV Choice of Weapons**
 - A. Use/Need
 - B. Quality

- V Ballistics**
 - A. Internal
 - B. External
 - C. Factors

- VI Fundamentals of shooting**
 - A. Five points
 - B. Safety
 - 1. Hardware
 - 2. Accessories
 - 3. Range rules

VII Written examination (Approximately mid-term)

- A. Must achieve 70% to pass
- B. Must pass this test in order to go to the range

VIII Range

- A. Familiarization
- B. Positions
- C. Shotgun
- D. Course for score

GRADING

There will be two quizzes and a midterm. The quizzes have a value of 50 points each. The mid-term has a value of from 250 to 300 points. The mid-term test is a comprehensive written test. The final examination is a practical application test consisting of a timed-fire course. The student must be able to achieve a minimum score of 70%. Range attendance and behavior will be factored into the final grade according to the following scale:

- Attendance: 100 points allotted. 25 points deducted for each unexcused absence.
- Tardiness: Counted as an absence ... will not be allowed to participate that day.
- Participation: 100 points allotted. 25 points deducted for each reprimand.

Any behavior by a student not considered appropriate (safe/legal) by the range master will be prima facie grounds for dismissal (temporary or permanently) from the range.

Grading Scale:

- 90% = A
- 80% = B
- 70% = C
- 60% = D
- 50% = F

Special Conditions

Students must be able to provide their own transportation to the Range, which is located approximately five miles from Reedley College.

Students must be able to provide their own safety eye-wear.

Students must be willing to wear appropriate clothing at the range; suitable for ease of movement, getting down and dirty: with available pockets for carrying supplies and equipment, and an adequate belt strong enough to support a gun and holster.

Guests are never allowed.

Laws, rules and regulations concerning the possessions and use of handguns will be strictly enforced.