

INSTRUCTOR: Mr. Huebschwerlen

SELMA CENTER

OFFICE HOURS: MW 5:30-6:00 pm

This course is designed for students who are not majoring in biology and/or who have a minimal background in zoology. The course is transferable and satisfies the general education requirement for a laboratory science class. The course introduces a variety of topics in animal biology.

Attendance at all lectures and labs is mandatory. Roll will be taken and any unexcused absence will result in the student being dropped from the class. Any two successive absences or a total of any three absences will also result in a mandatory drop from the course. The course meets each Monday and Wednesday from 6:00-8:15 pm. The last day to drop the class and not have it appear on the transcript is September 1; the last day to drop the class without having a letter grade assigned is October 13. All examinations must be taken; arrangements for makeup exams is the responsibility of the student and must be taken care of the session immediately following the examination missed as a result of a previously excused absence. The Selma Center may be reached by calling (209) 896-6651 the evening of the absence. The final examination will be given on Monday, December 11, at 6:00 pm. All examinations are listed on the accompanying schedule of lecture and lab topics.

Each student is responsible for acquiring his/her own Zoology Coloring Book, textbook, coloring pencils or pens, metric ruler, and biology sketch paper. Microscopes and lab equipment will be made available for each laboratory as required. Each student is responsible for any lost or broken laboratory materials or equipment and a replacement fee will be charged.

REQUIRED TEXT AND LAB MANUAL:

Biology: Concepts and Applications by C. Starr

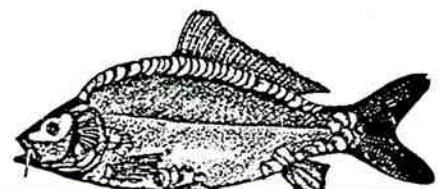
The Zoology Coloring Book by L. M. Elson

KRCC Animal Biology by S. A. Foletta (w/ course objectives)

DETERMINATION OF FINAL COURSE GRADE:

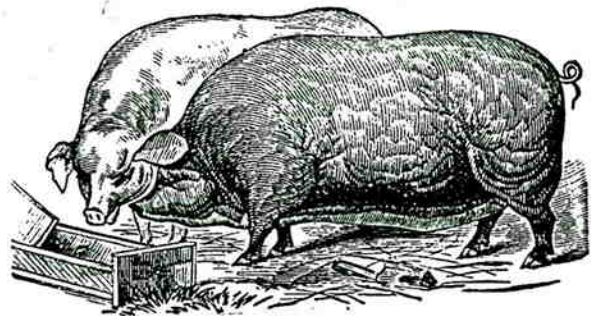
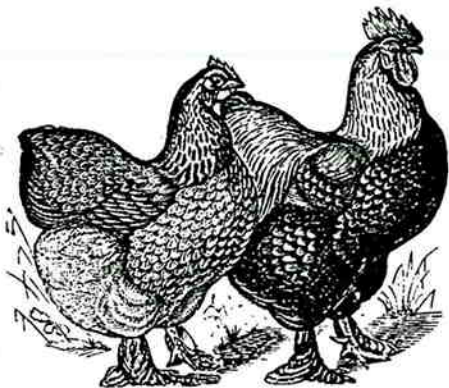
1. Weighted Value of Each Aspect of the Final Grade
 - a) 40% of your grade is based on the midterm exam given on Wednesday, November 1 (15%), and the final exam (25%).
 - b) 10% of your grade will be based on Lecture Exam #1.
 - c) 30% of your grade will be based on the two laboratory practical exams.
 - d) 20% of your grade will be based on completed lab reports and assignments.
2. Failure to take any scheduled exam will result in the student being dropped from the class.
3. Percentage requirements for each grade:

A - 90.9% or above	C - 70-79.9%	F - Below 60%
B - 80-90.8%	D - 60-69.9%	
4. Cheating or plagiarism on any exam or report will result in an automatic drop from the class with failure.



WEEK LECTURE AND LAB TOPICS

1. Introduction: Plant Biology; Scientific Method (Ch 1)
Lab #1: Metric System Lab #3: Microscopy
2. The Chemistry of Life (Ch 2)
Lab #2: Biochemistry Lab #4A: Diffusion, Osmosis
3. Cells: The Units of Life (Ch 3); Cell Division (Ch 7, 8)
Lab #4B: Cell Division Lab #5: Cell Metabolism
4. Cells and Metabolism (Ch 4, 6)
Lab #7: Genetics
5. Introduction to Genetics (Ch 9, 10, 11); Biotechnology
Lab #9: Classification, Simple Animals
6. Evolution and Classification (15); Protists
Lab #11: Arthropods Lab: Insect Classification
7. Invertebrates I (Ch 19)
Lab #10: Worms, Mollusks, Echinoderms
8. Invertebrates II (Ch 19)
LAB EXAM #1 (Practical Exam)
9. LECTURE EXAM #1 (Second Hour)
Lab #13B: Vertebrates (Ch 19)
10. Vertebrates (Ch 19)
Lab #14A: Birds
11. Vertebrates II
Lab #14b: Mammals
12. Tissues and Systems (Ch 23)
COMPREHENSIVE EXAM (Weeks 1-11)
13. Protection, Support, Movement (Ch 24)
Lab: Fetal Pig
14. Circulation (Ch 26); Respiration (Ch 28); Neural Control
(Ch 30)
Lab: Fetal Pig
15. Reproduction and Development (Ch 32)
Lab #8: Reproduction and Development
Lab #15/16: Systems
16. Ecology (Ch 33, 34, 35)
Lab: Populations, Ecosystems
17. The Biosphere (Ch 36); Biospheric Human Impact (Ch 37)
LAB EXAM #2 (Practical Exam)
18. FINAL EXAM (Comprehensive, Weeks 12-17)



Animal Biology