

**Reedley  
College**

*Annual Report  
2014-2015*



**M** *Madera  
Community  
College Center*  
Reedley College

**O** *Oakhurst  
Community  
College Center*  
Reedley College

# Contents

President's Message.....	3
State Center Community College District Board of Trustees.....	3
By the Numbers.....	4
Campus Close-Ups.....	5
Reedley College Student Profile .....	6
Our Mission .....	7
Our Vision and Our Values.....	7
Strategic Plan.....	8-9
Students' Success Story.....	9
Oakhurst Community College Center Student Profile .....	10
New Additions .....	11
Madera Community College Center Student Profile .....	12
Community Connections.....	13
Scholarships.....	13
Reedley College Student Profile .....	14
Accreditation .....	15
Reedley College Athletics .....	15



*Aerial view of Reedley College in May 2015.*

# President's Message



On behalf of the administration, faculty, staff and students at Reedley College, I welcome you to explore and learn what has taken shape on our campuses in this year's annual report. You will discover:

- College Snapshots
- An update on our Strategic Plan
- Our goals and visions
- Student Achievements
- Community Connections

This past year we've seen effective collaboration and growth promoting student

success, accessibility, equity and introduction of new pathways. We continue to build on and strengthen existing partnerships with stakeholders including many of our service area schools. At Reedley College, we are evolving to meet the needs of today's students and beyond, and we stand by our Wildly Important Goal: We Motivate and Inspire Students to Succeed.

We are proud of the transformation taking place on all of our campuses. In 2015, we have been able to hire more faculty and administrative staff. To promote accessibility, our institutions have been working diligently to add more classes and programs to ensure student success. We welcomed the addition of a new STEM Tutorial

Center in Madera, a newly renovated Testing Center in Reedley and programs to prepare our students for the ever-changing job market. We are extremely excited of what our future holds.

In closing, I am truly grateful to be surrounded by the many professionals who are dedicated to shaping the lives of students and their families. We will continue to achieve new heights and serve our community for generations to come.

Thank you for assisting us in our dream building, life changing work.



*Students are welcomed to the new Madera Community College Center STEM Tutorial Center.*



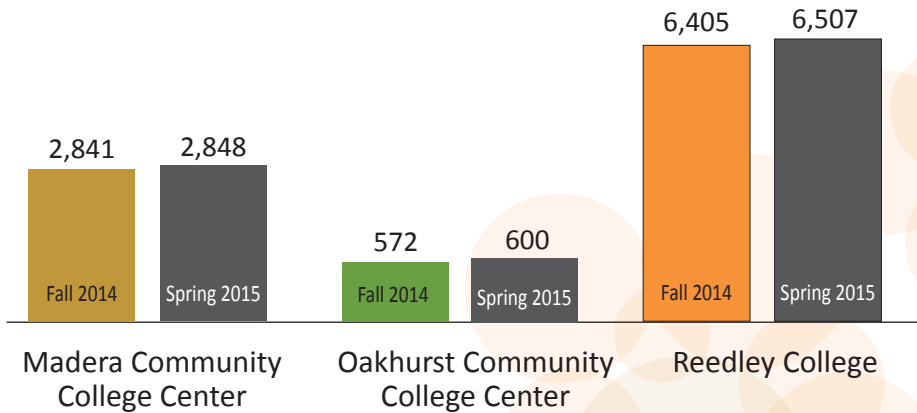
## State Center Community College District Board of Trustees:

Miguel Arias, Richard M. Caglia, Bobby Kahn, John Leal, Ronald H. Nishinaka, Patrick E. Patterson, and Eric Payne.

Interim Chancellor: Dr. Bill F. Stewart

# By the Numbers

## 2014-2015 Headcount



## 2013-2014 Financial Aid

Number of Students Awarded Financial Aid  
13,894

Amount of Financial Aid Awarded\* to Students  
\$50,818,986

Amount of Financial Aid Disbursed\* to Students  
\$31,239,400

\*The difference between the amount of financial aid awarded and disbursed is due to the variance in the number of units enrolled. Students taking fewer than 12 units are funded at a pro-rated amount.

## Fall 2014 Enrollment

	Reedley College	Madera Center	Oakhurst Center
<b>ETHNICITY</b>			
African-American/non-Hispanic	3% (182)	4% (111)	4% (24)
American Indian/Alaskan Native	1% (66)	1% (35)	5% (28)
Asian/Pacific Islander	5% (336)	8% (220)	6% (34)
Hispanic	70% (4458)	66% (1883)	30% (170)
Race/ethnicity unknown	1% (84)	1% (31)	3% (16)
White/non-Hispanic	20% (6405)	20% (561)	52% (300)
<b>AGE</b>			
19 or less	36% (2338)	25% (706)	25% (143)
20-24	40% (2535)	39% (1111)	35% (202)
25-29	11% (699)	15% (425)	17% (96)
30-34	5% (329)	8% (233)	9% (55)
35-39	3% (185)	4% (122)	4% (22)
40-49	3% (190)	6% (159)	7% (38)
50+	2% (123)	3% (84)	3% (16)
<b>GENDER</b>			
F	56% (3589)	66% (1883)	62% (353)
M	43% (2749)	32% (913)	38% (217)
NA	1% (67)	2% (45)	0% (2)
<b>UNIT LOADS</b>			
Full-Time	51% (3118)	37% (1053)	42% (243)
Part-Time	49% (3287)	63% (1788)	58% (329)



# Campus Close-Ups

From the heart of the Central Valley to the Southern Sierra Nevadas, Reedley College serves students with campuses in Reedley, Madera and Oakhurst. The proximity of these rural communities to the more urban city of Fresno allows for a unique learning environment. The college has an outstanding team of faculty and staff who support our diverse and active student population. We provide an affordable, high-quality education with a variety of programs and degrees.

## **Reedley College**

Reedley College continues to flourish creating pathways for success in the vocational and educational fields. Reedley College is committed to providing student athletes opportunities to attain their educational and athletic goals. RC is one of the 105 colleges that make up the California Community College Athletic Association and is a member of the Central Valley , Big 8, and Golden Coast conferences. Some of the college's unique programs include agriculture, industrial technology, forestry, and nursing assistant training.

## **Madera Community College Center**

Today, the MCCC is pivotal in meeting the needs of student success. The center provides resourceful programs in general/transfer, occupational and developmental education in order to help students meet diverse goals. Several unique programs including a Licensed Vocational Nursing Program, a Registered Nursing Program, and the Madera College Advantage Program (MCCAP) can be found at MCCC. MCCAP is designed to help high school seniors successfully transition to college by taking college classes and participating in activities at the center. The Center for Advanced Manufacturing at the MCCC offers degree and certificate programs in manufacturing and welding that address local manufacturing business needs. MCCC features a newly renovated Student Center and Cafeteria, STEM Tutorial Center, an Academic Village Complex, an administration building that includes a library, assembly hall, admissions and records, student services and offices.

## **Oakhurst Community College Center**

The Oakhurst Community College Center serves over 500 students each semester from the surrounding foothill communities in the heart of the Central Business District of Oakhurst. The center's facilities include a science lab, two computer labs, and abundant parking on the 2.5 acre site. Students can complete their general education requirements as well as earn a number of associate degrees and certificates. OCCC is working diligently to increase pathways that include developing a hospitality management program and a dual enrollment program with Yosemite High School.



*The Oakhurst Community College Center hosted the annual Community Unity event on April 30, 2015.*

# Kayla Jo Rodriguez

Reedley College Student

First introduced to the Reedley College Forestry Program in high school through the Valley Regional Occupational Program, Kayla Jo Rodriguez knew immediately here career was going to be in forestry. Rodriguez, a firefighter hot shot, was one of 3,000 firefighters who battled the summer 2015 Rough Fire in the Sierra National Forest in Fresno County. The Rough Fire was the 13th largest wildfire in California history burning 151,623 acres. Rodriguez, a wildland firefighter for three seasons, plans on transferring to Humboldt University to pursue a degree in Forestry with an emphasis in Wildfire Management. She aspires to be a Firefighter Management Officer on a national forest in the Sierra's.

*"Deciding to attend a community college first has proved to be the best decision I've ever made. The Forestry Program at Reedley College is one of the best in the state and it was easy to see why! The classes are small, hands-on and definitely have the community feel. The college is located only 30 miles from the Sierra National Forest which allows classes to be held in areas similar to those you will be working in as a professional. The instructors lead by example and encourage their students to pursue a career outdoors. Natural Resources instructor Kent Kinney and Fire Technology instructor David McCandliss have been my mentors, paving a road for me to follow and encouraging to dream bigger and go further. Reedley College forestry opened the door to many opportunities to work in parts of the country I never thought I'd travel to."*



# Our Mission

## Our Vision

Reedley College, including its centers and sites, will be a source of exemplary educational opportunities to foster and cultivate professional, well-prepared individuals who will contribute to our community.

## Our Values

Reedley College's vision is supported by the following values:

- Focus on Our Student's Success
- Strive for Excellence
- Foster Intellectual Curiosity
- Instill Personal Integrity
- Encourage Critical Thinking
- Respect Diversity
- Promote Service to Our Community



*For the first time in school history, certificates were awarded during the Reedley College Commencement ceremony on May 22, 2015.*

Reedley College, including its centers and sites, provides an accessible educational environment ensuring high-quality innovative learning opportunities supported by services for student success. We offer associate degree programs, career technical education, transfer level and basic skill courses. We instill a passion for learning that will meet the academic, workforce, and personal goals of our diverse population.

## Moving Forward

Students graduating with an associate degree from Reedley College will be able to meet the following institutional learning outcomes:

### Communication Skills

- Interpret various types of written, visual and verbal information.
- Organize ideas and communicate precisely and clearly to express complex thoughts both orally and in writing.

### Critical Thinking and Information Literacy

- Analyze quantitative information and apply scientific methodologies.
- Employ critical and creative modes of inquiry to solve problems, explore alternatives, and make decisions.
- Synthesize researched information obtained from accurate, credible and relevant sources to support, advance or rebut an opinion.

### Global and Community Literacy

- Analyze the fine arts, humanities, and social sciences from cultural, historic and aesthetic perspectives.
- Apply historical and contemporary issues and events to civic and social responsibility.
- Demonstrate sensitive and respectful treatment of a variety of ethnic, religious and socioeconomic backgrounds.

### Personal Development

- Assess current knowledge, skills and abilities to further develop them and apply them to new situations.
- Incorporate physical and emotional principles to make healthy lifestyle choices.
- Make ethical personal and professional choices.

# Strategic Plan

Reedley College continues to work on the Strategic Plan. The President's Advisory Cabinet along with our Institutional Researcher and Strategic Planning, Standing Accreditation & Institutional Effectiveness, and Student Success Committee Co-Chairs went through an exercise to identify the 2015-16 drivers and outcomes. On Opening Day in August, the entire college brainstormed strategies that are in place or should be in place to achieve these objectives.

## Designated Driver

**Objective 2.1:** Evaluate course offerings to ensure sequencing that will allow students to finish a program in a reasonable amount of time.

## Drivers

**Objective 2.3:** Provide broad-based instructional support services relevant to the diverse needs of the students.

**Top Opening Day Ideas:** Increased counseling and advising, increased academic support services, advising days, professional development.

**Objective 2.4:** Maintain a safe environment conducive to learning while providing services and activities that maximize the opportunity for educational and personal.

**Top Opening Day Ideas:** Proactive Maintenance, more cultural-based student activities, professional development regarding safety across campuses, general safety.

**Objective 6.4:** Maintain and improve communication between Reedley, Madera and Oakhurst and their surrounding communities.

**Top Opening Day Ideas:** Campus and community events, open house and campus tours, improve webpage, identify what services the community has to offer to our students, connect with our feeder schools.

## Outcomes

**Objective 4.3:** Increase the number of quality work and internship experiences, apprenticeships, and job shadowing and service learning opportunities.

**Objective 5.6:** Utilize, improve and maintain technology and facility infrastructure to support academic success.

**Objective 6.1:** Engage in open and clear communication between Reedley College and the District.



*Reedley College President Dr. Sandra Caldwell gives a thumbs up during the fall 2014 Opening Day activities.*



# Strategic Plan

Reedley College's Strategic Plan was created in alignment with the State Center Community College District Strategic Plan. The Strategic Plan is created in a four year cycle; the current being 2012-2016 for the district and 2013-2017 for Reedley College. An expanded version of the SCCC District Strategic Plan is available online at [www.scccd.edu](http://www.scccd.edu), under "About Us". The 2013- 2017 Reedley College Strategic Plan is available at [www.reedleycollege.edu](http://www.reedleycollege.edu), under "About Us".

## 1. Student Success

Reedley College is committed to empowering students to achieve their educational and vocational goals by offering academic guidance and support, career technical training, and opportunities for personal growth that will promote success.

## 2. Student Access and Services

Reedley College is devoted to providing access and services for students to obtain their educational goals.

## 3. Teaching and Learning

Reedley College is committed to providing the highest quality instructional programs utilizing current and emerging instructional methods that focus on student success.

## 4. Economic and Workforce Development

Reedley College is committed to being a partner in developing the economic vitality of the region through collaboration with its community partners and will strive to ensure access to quality career technical programs.

## 5. Organizational Development and Effectiveness

Reedley College is committed to persistently improving its institutional, fiscal and technological effectiveness for each campus.

## 6. Communication

Reedley College is committed to continually improving effectiveness in communication.

## Students' Success Story

In spring 2015, four Madera Community College Center students served as interns for the San Joaquin River Parkway Trust. As interns, David Bulawski, Natalie Misquez, Sarah Bull, and Jennifer Bulawski, helped teach sixth grade students from various schools in the Madera Unified School District about the natural and cultural history along the San Joaquin River. The internships provided a stipend, but more importantly, experience working with Parkway Trust personnel in conducting activities for the sixth graders. Serving as advisor for the group was Frank Yancey, MCCC biology instructor.



*MCCC student Natalie Misquez presents a sixth grade student with native basketry similar to that used by the Yokuts along the San Joaquin.*

# Gricelda M. Spear

Madera and Oakhurst Community College Counselor

Spear has been with the State Center Community College District since 1999. Spear graduated from CSU Northridge with a B.A. in Psychology and with a M.S. in Rehabilitation Counseling from Fresno State. She is a veteran and the Veterans Counselor. She assists Veteran students by informing them of their benefits, assisting them in applying to the Veterans Administration to obtain benefits and ensuring that their Student Education plan reflects their education goals. As the Transfer and Career Center Liaison for Madera and Oakhurst Community College Centers, Spear ensures that university and college representatives meet with students and inform them of the opportunities at their campuses.

*"Being a community college counselor is for me the ultimate career. I love what I do. I feel that the community college gave me the confidence and skills to reach my education and career goals. I feel strongly that those of us who are fortunate enough to work at a community college have the ability to be the wind under students wings, and we can really make a difference in their lives by giving them confidence in themselves and support in their endeavors. I am passionate about our work and our responsibility to our students, for me specifically, first generation students and Veterans are especially dear to my heart."*



**Oakhurst  
Community  
College Center**

**Reedley College**

# New Additions

As we continue to serve an increased number of students, Reedley College and its campuses have been filling much needed positions. This year alone, MOR campuses have hired 67 employees with more additions to come. Here is a snapshot of some of this year:

- 5 Administrative Positions
- 25 Faculty Positions
- 27 Classified Positions

MOR campuses will continue to add more classes and expand programs to keep pace with enrollment growth, which will greatly benefit students for years to come.

## ***Oakhurst Center Degrees/Courses***

Oakhurst has been adding courses with degree completion in mind. Towards this end, Oakhurst has increased the number of degrees that can be completed at the Center by 71% to 12. The number of certificates has been increased to 5, which is a 66% increase. The degrees that can be completed entirely by attending the Oakhurst Center are:

- Associate of Science in: Biological Science, Business Administration, Business Administration, General Business, Business Administration, Entrepreneurship, Business Administration, Management, and Management
- Associate of Arts in: Social Science, Liberal Arts, Liberal Arts/Emphasis in Arts and Humanities, Liberal Arts/Emphasis in Natural Sciences, and Liberal Studies
- Associate of Science Transfer in Business Administration

## ***Madera Community College Student Center/Cafeteria***

The newly remodeled Madera Community College Center Student Center/Cafeteria officially opened in September 2015. The cafeteria has added menu items for student and staff enjoyment.



*Madera's improved Cafeteria.*

## ***Reedley College Herdsman Housing***

In early 2015, the Herdsman Housing, was complete. It is a home that houses students who work on the campus farm in exchange for residency. The Herdsman Housing is a new four-room residence that is located at the southern end of the campus directly east of the pavilion building.



*Herdsman Housing residents are interviewed by ABC Channel 30 during the building's ribbon-cutting ceremony in January 2015.*



# Hendrik Eddie Block

Madera Community College Center Student

Madera Community College Center student Eddie Block embodies the spirit of the campus with a commitment to serve. Block is currently President of the Associated Student Government and spearheads many events and functions on campus while also excelling in the classroom. He is a Civil Engineering and Business Administration major who will be transferring to Fresno State to pursue his degree in Civil Engineering.

*"I enjoy attending the Madera Community College Center because of the small classes; it makes it more personable. You get to know your professors and you can build a great relationship with them.*

*They have great administrators in President Dr. Sandra Caldwell and Vice President Dr. John Fitzer who welcome students into their office. I love being ASG president because it gives me a chance to give back to the college."*





# Community Connections

Our annual report highlights community connections that have made significant impact in our student lives while building for the future.

## Reedley College

In January, Reedley College and the State Center Community College District received a gift of \$225,000 for the Natural Resources Program River Rangers Project from the Edwin K. Family Fund through the Fresno Regional Foundation.

The project will help provide restoration and care of riparian resources on the college campus riverfront by performing vegetation management, improving quality of trails and patrolling of the river trail.

The project, under the direction of Reedley College Natural Resources instructor Kent Kinney, is in its early stages of implementation.

“This is an incredible moment not only for the project, but for our students, and the entire community,” states RC President Sandra Caldwell. “We could not be more excited to have these excellent partnerships to support such programs and envision a place for all to enjoy for generations to come.”

## Madera Community College Center

Madera Community College Center’s Career Technical Education program is pleased to have a partnership with John Bean Technologies (JBT) Corporation in Madera. The partnership launched the Manufacturing Associate I – Manufacturing & Service Apprenticeship program. The program is providing training for 10 apprenticeships for the corporation.

JBT is a leading global technology solutions provider to high-value segments of the food processing industry.

## Scholarships - Community Sponsored

Reedley College Foundation is a 501 (c) 3 entity and plays a key role in financing higher education through support of the colleges and scholarships.

The Foundation with the help of individuals, firms, or organizations establishes and provides scholarships to deserving students including memorializing or honoring an individual. This is a great opportunity to promote our college while playing a key role in student growth and achievement. The Foundation is committed to ensure that students of all walks of life have the financial resources to fulfill their educational dream.

Every dollar contributed is not only an investment in our community but to our future. If interested in contributing to an existing scholarship, or establishing a new scholarship, inquiries may be directed to Reedley College Foundation, P.O. Box 227, Reedley, CA 93654.



*RC student Catrina Auzaldua (Dinuba High School) received a Reedley College Foundation Scholarship on Sept. 9, 2014.*

# Luciana DeJesus Solorzano

Reedley College Student

Luciana faced many obstacles in life including not being able to speak English at the age of 15. The Dinuba native worked extremely hard to break barriers and become a role model for her two children ages 10 and 7. Luciana credits being a member of the Student Support Services Program (SSS) and the support of Director of Student Support Services Sandra Fuentes and Counselor Rosalva Valdez with her success. With a nursing certificate from Reedley College, Luciana has her sights on continuing her education and applying for nursing school at Fresno State next year.

*"I needed to finish high school, go to college and get an education.*

*I wanted to be an example to my children and be able to provide a better future for them. Whenever I get a certificate of recognition, they get excited and they are always there supporting me. I think it's important to have goals and find the way to make school part of your life and never give up."*



**Reedley  
College**

# Accreditation

Reedley College is accredited by the Accrediting Commission for Community and Junior Colleges (ACCJC), Western Association of Schools and Colleges (WASC) which accredits community colleges and other associate degree granting institutions in the Western region of the U.S. It is the institutional accrediting body recognized by the Council of Higher Education. The ACCJC is one of seven regional accrediting commissions. The ACCJC is authorized to operate by the U.S. Department of Education through the Higher Education Opportunity Act of 2008.

The accreditation process requires the college to do a self-study. This self-study is a three-part process of accrediting an institution. This process includes an institutional self-appraisal, an on-site visit by a team of peers, and a review and a decision on the accredited status of the college by the commission.

## Reedley College Athletics

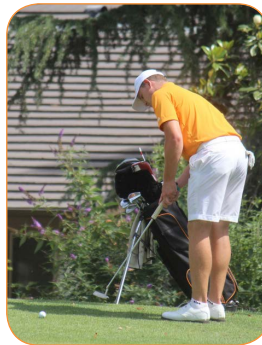


*The 2015 Softball Team celebrates after clinching the CVC title in April 2015.*

In addition to the league title, Morgan Blanchard was CVC Player of the Year, Elizabeth Flores was CVC Pitcher of the Year, and Coach Kathy Kuball was named CVC Coach of the Year.

The 2015 Men's Golf Team had many accomplishments during their season. They were named Central Valley Conference Champions, Central Valley Division Champions of the Big 8 Conference, Northern California Regional Champions, and placed 2nd at the California Community College State Championships. Leading the way for the Tigers was Ben Hallam, who was named First-Team All State.

The 2015 Reedley College Softball Team was named Central Valley Conference (CVC) champions. This made the Lady Tigers back to back conference champions after their championship win in 2014. In



*Ben Hallam putts during the State Championships.*

*Reedley College complies with all federal and state rules and regulations and does not discriminate on the basis of race, color, national origin, gender, disability, sexual orientation, religion or age. This holds true for all students who are interested in participating in educational programs and/or extracurricular school activities.*

*Harassment of any employee/student with regard to race, color, national origin, gender, disability, sexual orientation, religion or age is strictly prohibited. Limited English speaking skills will not be a barrier at Reedley College to participation in Vocational Education programs. Inquiries regarding compliance and/or grievance procedures may be directed to the college's Title IX Officer and/or the Section 504/ADA Coordinator.*

*Lisa McAndrews, Reedley College Title IX Officer and Section 504/ADA Coordinator  
995 N. Reed Ave. Reedley, CA 93654  
559-638-0300 ext. 3258.*



State Center Community  
College District

**Reedley College**

995 N. Reed Avenue, Reedley, CA 93654

559-638-0300

[www.reedleycollege.edu](http://www.reedleycollege.edu)

**Madera Community College Center**

30277 Avenue 12, Madera, CA 93638

559-675-4800

[www.maderacenter.com](http://www.maderacenter.com)

**Oakhurst Community College Center**

40241 Highway 41, Oakhurst, CA 93644

559-683-3940

[www.oakhurstcenter.com](http://www.oakhurstcenter.com)