

Facilities Master Planning Committees Structure

The master planning process required the District to assist the Master Planning team with decisions important to the master planning process.

The planning process required the engagement of staff, students, faculty, campus and district administration; as well as the Chancellor and Board of Trustees and the Community. Throughout the process, the various constituency groups provided input while incorporating appropriate checks and balances.

The final Master Plan is subject to review and ratification by the Board of Trustees.



PLANNING COMMITTEE STRUCTURE

Chancellors' Cabinet Committee - represents the highest level of administrative leadership in the District.

This committee provided input on Macro issues in the District such as:

- Capacity of Campus Sites
- Budget Targets/Limits
- Delivery schedule
- Special facilities locations
- Districtwide facilities standards and goals
- Design & building aesthetic considerations
- Centralizing site support such as Security, Maintenance & Grounds
- Technology Master Plan

Strategic Planning Committee - This districtwide facilities committee, is most familiar with the districtwide physical improvements, and provided input, on planning, construction, funding and operational leadership. This committee deals with District -wide and site specific issues such as:

- Facility planning, design and construction oversight
- Maintenance and operations oversight
- Faculty Space Needs/Goals
- Funding analysis for proposed physical improvements
- Site special facility needs
- Site athletic facility needs
- Site technology infrastructure
- Parking needs
- Site security issues

Site Facilities Sub-Committees – These site specific committees are most knowledgeable of their individual campus and operations. These committees consists of teaching faculty, department heads, maintenance and operations staff, administrative staff, students and the President of the college. This group addressed the site specific physical improvement needs of their individual campuses, respective to their educational goals, student needs and community wishes. This committee addressed site specific issues that exist on their campus and help set direction based on their goals for the campus such as:

- Provided input regarding physical improvement needs at their site.
- Provided valuable site specific input regarding campus operations.
- Site specific goal setting and needs input.
- Discussed changing aspects of the curriculum and how facility designs must respond to these changes.
- Discussed the philosophy of the individual departments and articulate the department goals.
- Articulated how physical improvements on their campus could respond to student needs and improve student performance and satisfaction.
- Discussed general requirements such as adjacencies and campus functionality.

Facilities Master Planning Committees Structure

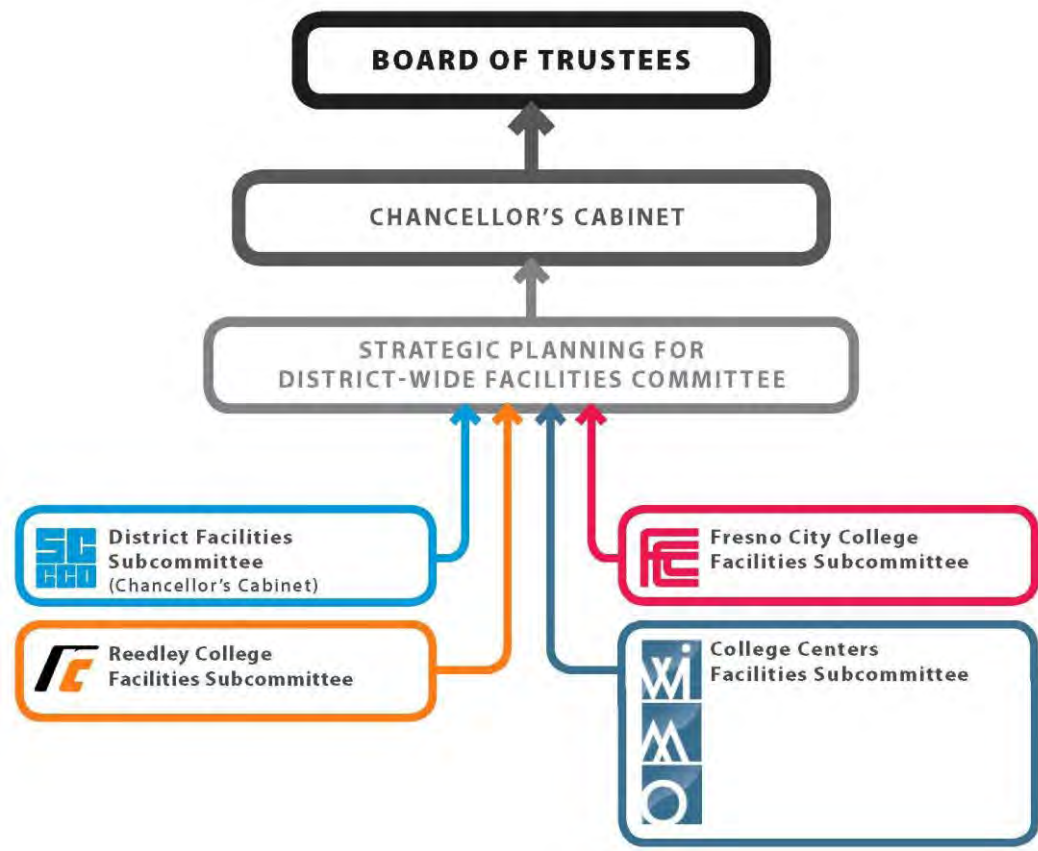
The planning process for the SCCCD Facilities Master Plan was highly participatory, engaging the many constituencies of the District. The Planning Team worked closely with multiple Planning Committees which included faculty, classified staff, administrators and students.

The Planning Committees had much to consider throughout the Master Planning process. Through a series of highly interactive meetings with each of the Site Facilities Sub-Committees, meetings which provided analysis of existing conditions, evaluation of a series of options and decision-making, culminated in the development of the 2012 Districtwide Facilities Master Plan.

Additionally, presentations were held with the District Administration, Board of Trustees and the larger college community to provide opportunity for input and broaden the plan's perspective. The interactive planning process encouraged effective participation of numerous college stakeholders and led to recommendations that will be supported by the entire college community.

FACILITIES MASTER PLANNING ORGANIZATIONAL CHART

State Center Community College District



Facilities Master Planning - Key Participants

BOARD OF TRUSTEES

H. Ronald Feaver	President
William J. Smith	Vice President
Richard M. Caglia	Secretary
Isabel Barreras	Trustee
Ronald H. Nishinaka	Trustee
Patrick E. Patterson	Trustee
Dorothy "Dottie" Smith	Trustee

CHANCELLOR'S CABINET

Deborah G. Blue, Ph.D.	Chancellor
Ed Eng	Vice Chancellor Finance and Administration
Tony Cantu	President, Fresno City College
Dr. Mitjl Carvalho Capet	President, Reedley College
Dr. Terry Kershaw	President, Willow-International Community College Center
Robert Fox	Interim Associate Vice Chancellor for Workforce Development and Educational Services
Randy Rowe	Associate Vice Chancellor for Human Resources
Brian Speece	Associate Vice Chancellor for Business and Operations
Dr. Teresa Patterson	Executive Director for Public & Legislative Relations
Gurdeep Sihota-He'bert	Executive Director, Foundation
Greg Taylor	General Counsel

STRATEGIC PLANNING FOR DISTRICTWIDE FACILITIES COMMITTEE

Deborah Blue	Chancellor, District Office
Ed Eng	Vice Chancellor, District Office
Brian Speece	Assoc. Vice Chancellor, District Office
Kelly Fowler, Interim	VP, Instruction (FCC)
Marilyn Behringer	VP, Instruction (RC)
Deborah Ikeda	VP, Instruction (NC)
Cheryl Sullivan	VP, Business Services (FCC)
Donna Berry	VP, Business Services (RC)
Janell Mendoza	Assoc. Bus. Mgr. (NC)
Claudia Habib	Academic Senate (FCC)
Tom Mester	Academic Senate (NC)
Homer Green	Classified Senate (FCC)
Bill Turini	Academic Senate (RC)
Thomas Gaxiola	Academic Senate (FCC)
Lacy Barnes	Faculty Union
Melanie Highfill	Classified Senate (RC)
Donna Baker-Geidner	CSEA
Michael Bourbonnais	CSEA (1)
Ben Andersen	Student Rep (FCC), ASG President
Lorrie Hopper	Interim Assoc. Bus. Mgr. (NC) 10/11-4/12

FACILITIES SUBCOMMITTEES

Fresno City College - Facilities Subcommittee
 Reedley College - Facilities Subcommittee
 College Centers - Facilities Subcommittee
 District - Facilities Subcommittee

Facilities Master Planning - Key Participants

Facilities Subcommittees



Fresno City College - Facilities Subcommittee

Brian Speece	Assoc. Vice Chancellor, District Operations
Carey Dutcher	Applied Tech
Christine Miktarian	Manager of Construction
Claudia Habib	Faculty Academic Senate President
Cris Monahan Bremer	FCC-PIO
Doug Halderman	FCC-Applied Tech/Architecture
Homer Greene	Student Services
Janell Mendoza	FCC-VP Admin Services
Jessica Hau	Student Alumni
Jonathan Davey	FCC Social Sciences
Joseph Diebert	EH&S
Julie Dana	Music-FPCA
Ken Zamora	FCC-Architecture
Laura West	Faculty Art-Sculpture
Maria D. Coronel	Humanities
Paula Demanett	FCC-Library & Student Learning Support Services
Rafael Salazar	Adjunct Instructor Applied Tech
Raquel Ochs	Social Science-Child Development
Seth Yates	Chemistry Faculty
Shanna Ahrens	Classified Senate
Steve DaSilva	FCC-Greenhouse Technician
Susan Yates	Athletics
Tabitha Villalba	FCC Facilities Committee
Tony Cantu	President
Virginia Osborn	FCC-Biology Dept. Chair
Wendell Stephenson	Humanities

Reedley College - Facilities Subcommittee

Marilyn Behringer	V. P. of Instruction
Donna Berry	V.P. Administrative Services
Jim Burgess	Building Services Manager
David Clark	Dean of Instruction
Marcy Davidson	Child Development
	Instructor/Coordinator
	Dean of Instruction
Jan Decker	DSPS
Linda Dover	OAll, V.P. Admin. Office
Michelle Garcia	Operations Assistant
Donna Lee	Instructor, AGNR
David M. Lopes	DSPS
Steve Maciel	Manager of Construction
Christine Miktarian	ESL
David Nippoldt	Dental
Lois Paterno	Dental
Shelly Sorenson	Assoc. Vice Chancellor, District Operations
Brain Speece	Agriculture Business
	Counseling
Dustin Sperling	Classified/Dept. Secretary
Michelle Stricker	Student Services
Paula Ramos	Vice President of Student Services
Diana Tapia-Wright	
Michael White	

College Centers - Facilities Subcommittee

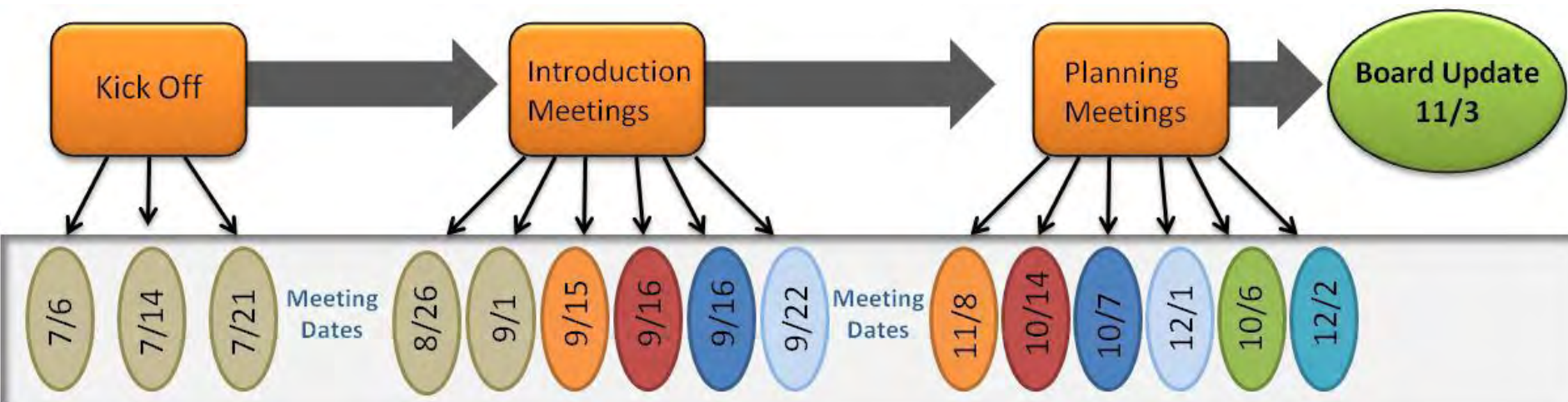
Becky Allen	Physical Education, Health
Brian Speece	Assoc. Vice Chancellor, District Operations.
	Manager of Construction
Christine Miktarian	Building Generalist
Dan Hoffman	Vice President of Instruction & Student Services
Deborah Ikeda	Director of Technology
	Counselor
Gary Sakaguchi	Faculty Psychology
Gracie Spear	Philosophy
Harold Seymour	Physical Education
Jim Druley	Secretary to the College President
Kristen Mattox	Assoc. Acting College Business Manager
Linda Little	Student
Lorrie Hopper	Director of DSP&S
	Child Development
Luis Melgoza	President Willow-International College Center
Lynn Samuelian	Child Development
Sallie Turpen	
Terry Kershaw	
Tina Luera	

District - Facilities Subcommittee

Brian Speece	Assoc. Vice Chancellor, District Operations.
	Director of Maintenance & Operations
Carl Simms	Manager of Construction
Christine Miktarian	Grounds Manager
Glen Foth	Chief of Police
Joe Callahan	Police Lieutenant
Richard Gaines	

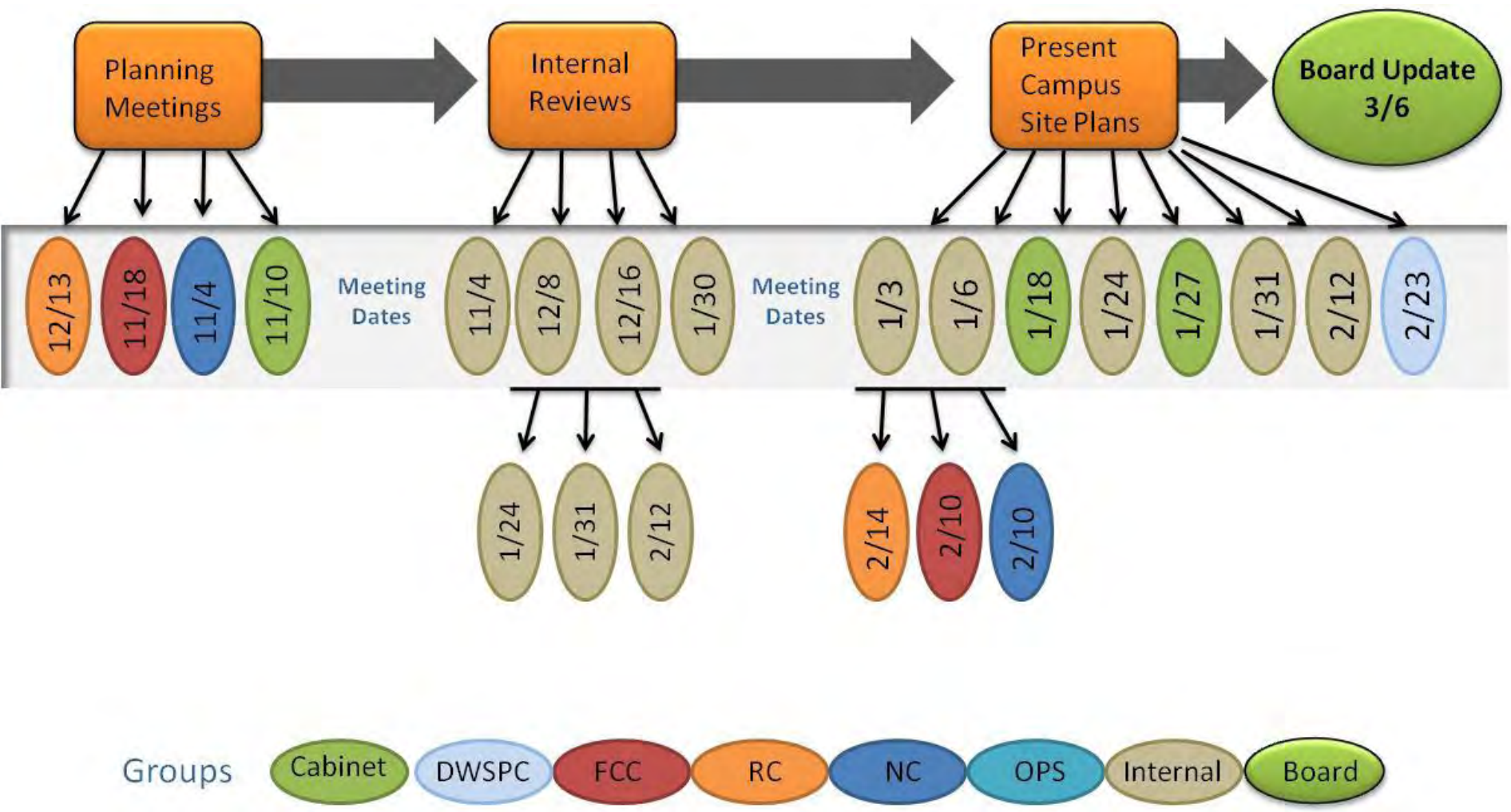
Meetings

July – November 2011



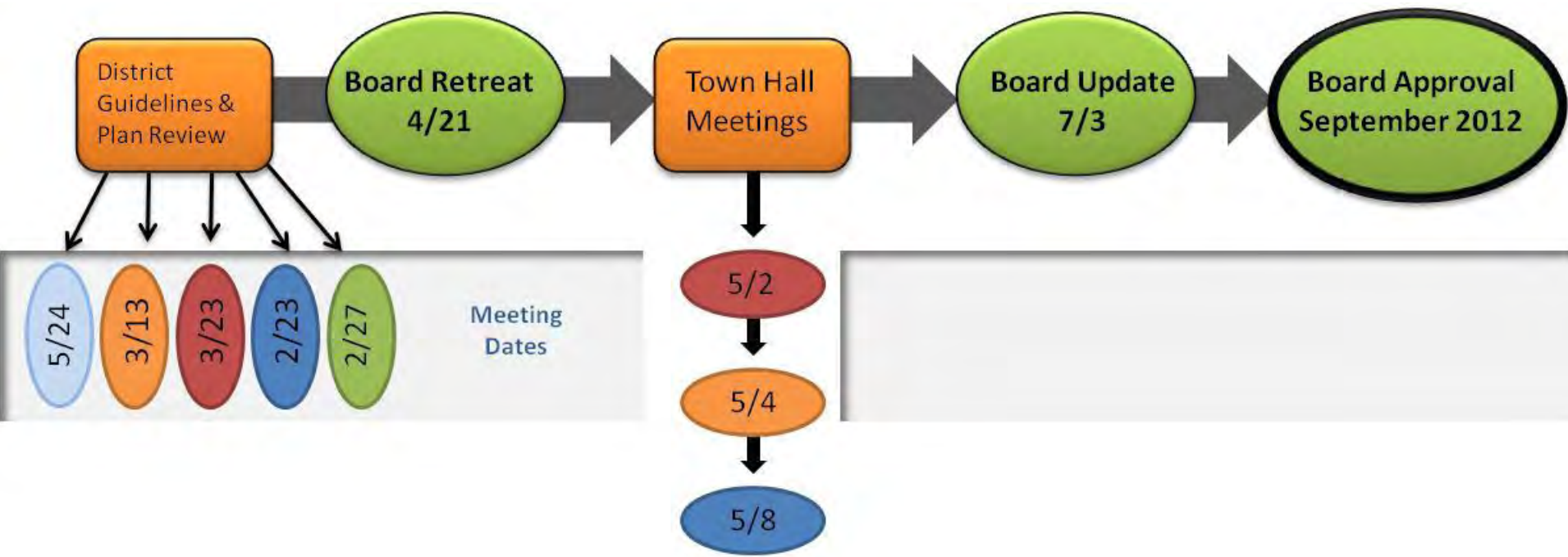
Meetings

November 2011 – March 2012



Meetings

March 2012 – July 2012



Facilities Master Planning Team

DARDEN ARCHITECTS

Martin E. Dietz, AIA, CCS, LEED AP
Robert L. Petithomme, AIA, LEED AP

PAUL HALAJIAN ARCHITECT

Paul N. Halajian, AIA

BLAIR CHURCH AND FLYNN

Civil Engineer

TJKM

Transportation Consultant

LARS ANDERSON

ADA Survey

POWER AND COMMUNICATIONS ENGINEERING

Electrical and Telecommunications

ROBERT BORO

Landscape Architect

